

MCMV m06 (gp48)

CONTACT INFORMATION: Center for Proteomics. University of Rijeka
TYPE: mouse monoclonal antibody
CLONE NAME: CROMA229
PROTEIN: CCE57335.1
PROTEIN WEB: <http://www.ncbi.nlm.nih.gov/protein/CCE57335.1>
ANTIGEN USED: MHC class I immunoprecipitates from MCMV infected cells
FUSION PARTNER: SP2O
ISOTYPE: kappa IgG1
SPECIES REACTIVITY: MCMV
PREPARATION AND STORAGE: -20 C long term, short term +4 C

PUBLICATION DESCRIBING ANTIBODY CHARACTERIZATION/VALIDATION

A cytomegalovirus glycoprotein re-routes MHC class I complexes to lysosomes for degradation.
Reusch U1, Muranyi W, Lucin P, Burgert HG, Hengel H, Koszinowski UH.
EMBO J, 1999.

<http://www.ncbi.nlm.nih.gov/pmc/articles/PMC1171199/pdf/001081.pdf>

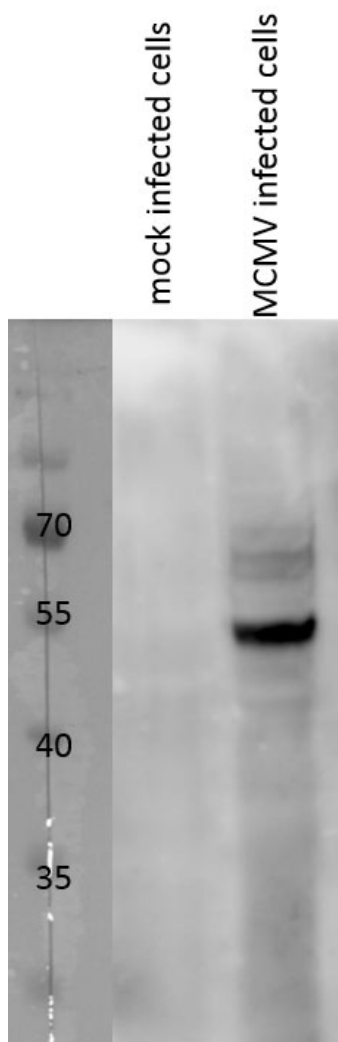
REFERENCES

A cytomegalovirus glycoprotein re-routes MHC class I complexes to lysosomes for degradation.
Reusch U1, Muranyi W, Lucin P, Burgert HG, Hengel H, Koszinowski UH.
EMBO J, 1999.

<http://www.ncbi.nlm.nih.gov/pmc/articles/PMC1171199/pdf/001081.pdf>

APPLICATIONS

WB Techniques	Clone	Dilution	Antibody concentration	Positive control	Negative control	Expected MW	Observed Mw	Positivity in other species
Western Blotting								
	CROMA2 29	1:500	2 ug/mL	MCMV infected cells	mock infected cells	48	48	NT
Immunoprecipitation								



WB m06

MCMV infected and mock infected Balb/c MEFs were lysed using RIPA buffer, separated on SDS-PAGE, transferred to PVDF membrane and immunoblotted with m06 antibody.

Monoclonal Antibodies Catalogue

FLOW CYTOMETRY	Clone	Dilution	Positive control	Negative control	Type of fluorocrom
	CROMA229	1:500	MCMV infected cells	mock infected cells	secondary anti-mouse FITC