

MCMV IE1

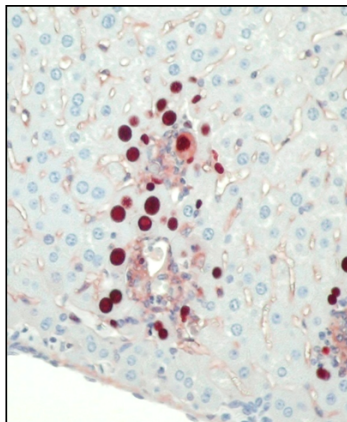
CONTACT INFORMATION: Center for Proteomics. University of Rijeka
TYPE: monoclonal
CLONE NAME: IE1.01
PROTEIN: MCMV immediate early protein 1
PROTEIN WEB: <http://www.ncbi.nlm.nih.gov/protein/AAA74504.1>
ANTIGEN USED: lysates of MCMV infected cells
FUSION PARTNER: SP2O
ISOTYPE: kappa IgG2a
SPECIES REACTIVITY: MCMV
PREPARATION AND STORAGE: affinity purified, dilluted in PBS, -20C long term, +4 short term, no azide added

DESCRIPTION

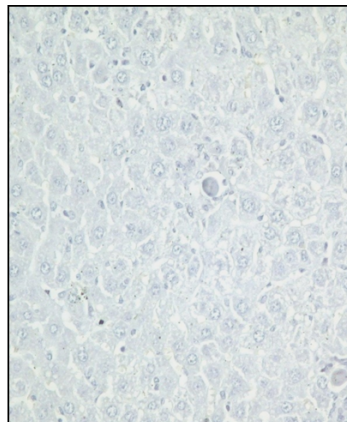
Specificity of the antibody was confirmed by mass spectrometry analysis of immunoprecipitated protein using this mAb.

APPLICATIONS

IHC Techniques	Clone	Dilution	Antibody concentration	Antigen retrieval method	Visualization kit	Positive control	Negative control	Protein localization	Positivity in other species
Frozen tissue and cytopspins									
Paraffin tissue									
	IE1.01	1:1000				MCMV infected tissue	uninfected tissue	nuclear	
Immunofluorescence									
	IE1.01				FITC	MCMV infected cells	uninfected cells	nuclear	



CROMA 101
(α pp89)

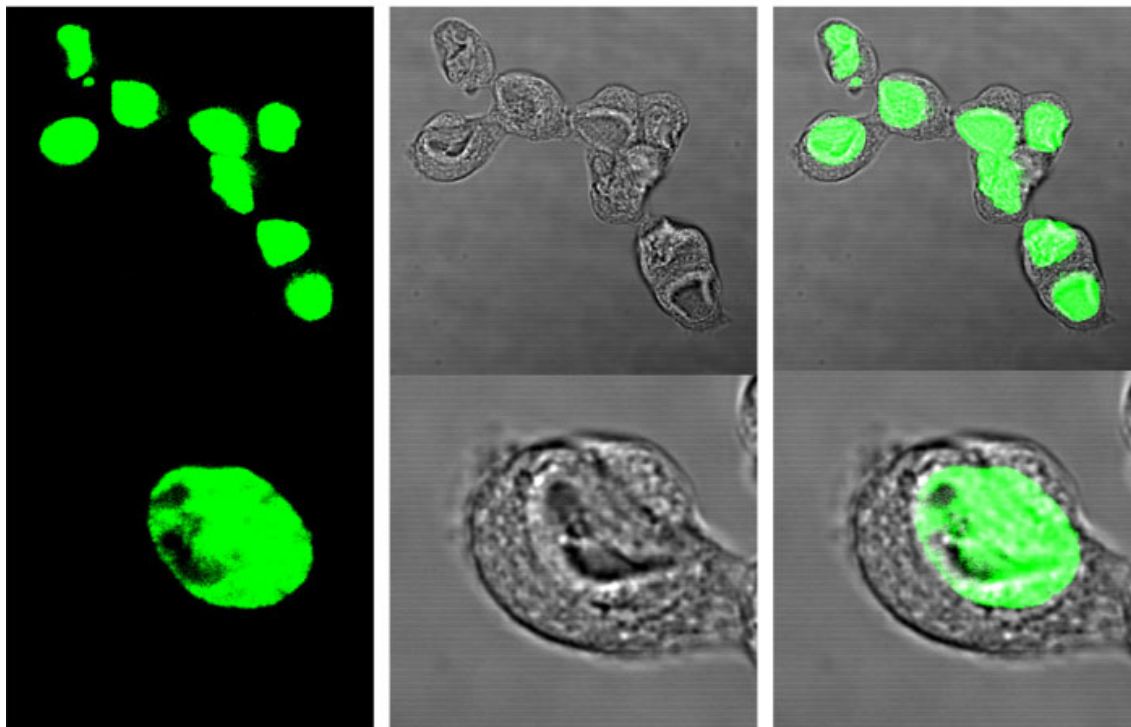


negative control

Liver of BALB/c mouse infected with MCMV (1×10^6 PFU)
Formalin-fixed, paraffin-embedded tissue sections stained with monoclonal
antibodies as indicated. (Magnification, x 20)

IHC on paraffin embedded tissues IE1.01

IE1.01 (anti-m123) MW in IF



FLuorescence IE1.01

Murine embryonal fibroblasts (MEFs) from Balb/c mice were infected with Smith strain of MCMV.