

## MASTL

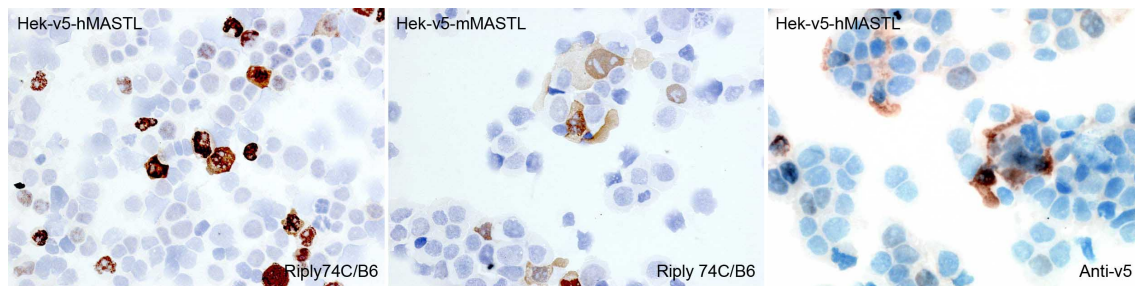
**CONTACT INFORMATION:** Monoclonal Antibodies Unit. Centro Nacional de Investigaciones Oncológicas  
**STATUS:** Validated  
**TYPE:** mouse anti mouse  
**CLONE NAME:** RIPLY74C  
**PROTEIN:** Microtubule associated serine/threonine kinase-like  
**PROTEIN WEB:** <http://www.ncbi.nlm.nih.gov/protein/AAH09107.1>  
**ANTIGEN USED:** GST-hMASTL recombinant full length protein  
**FUSION PARTNER:** NS1/Ag4-1 (NS1) cells  
**ISOTYPE:** IgG1  
**SPECIES REACTIVITY:** Human and mouse  
**PREPARATION AND STORAGE:** Aliquot and store at 4C. Do not freeze

### DESCRIPTION

MASTL (microtubule associated serine/threonine kinase-like), also known as GW, THC2 or serine/threonine-protein kinase greatwall, is an 879 amino acid serine/threonine kinase regulates mitosis entry and maintenance. Depletion of MASTL delays the G2-to-M phase transition, is linked to a prolonged mitosis and sensitizes cells to mitotic death.

### APPLICATIONS

IHC Techniques	Clone	Dilution	Antibody concentration	Antigen retrieval method	Visualization kit	Positive control	Negative control	Protein localization	Positivity in other species
Frozen tissue and cytopspins									
Paraffin tissue									
									mouse
Immunofluorescence									



### **RIPLY74C mAb in transfected cells**

HEK293T/v5-hMASTL and HEK293T/V5-mMASTL cells using antibody RIPLY74C. Anti-V5 antibody was used as positive control.