

FRA2

CONTACT INFORMATION:	Monoclonal Antibodies Unit. Centro Nacional de Investigaciones Oncológicas
STATUS:	Validated
TYPE:	Rat anti mouse
CLONE NAME:	REY146C
PROTEIN:	Fos like antigen 2
PROTEIN WEB:	http://www.ncbi.nlm.nih.gov/nucleotide/229577213?report=genbank&log\$=nuclalign&blast_rank=1&RID=ZNM5H8A201R
ANTIGEN USED:	HIS-mFRA2 (178-326aa) recombinant protein
FUSION PARTNER:	myeloma p3-NS1/Ag4-1 (NS1) cells
ISOTYPE:	IgG2a
SPECIES REACTIVITY:	mouse
PREPARATION AND STORAGE:	Aliquot and store at 4C. Do not freeze

REFERENCES

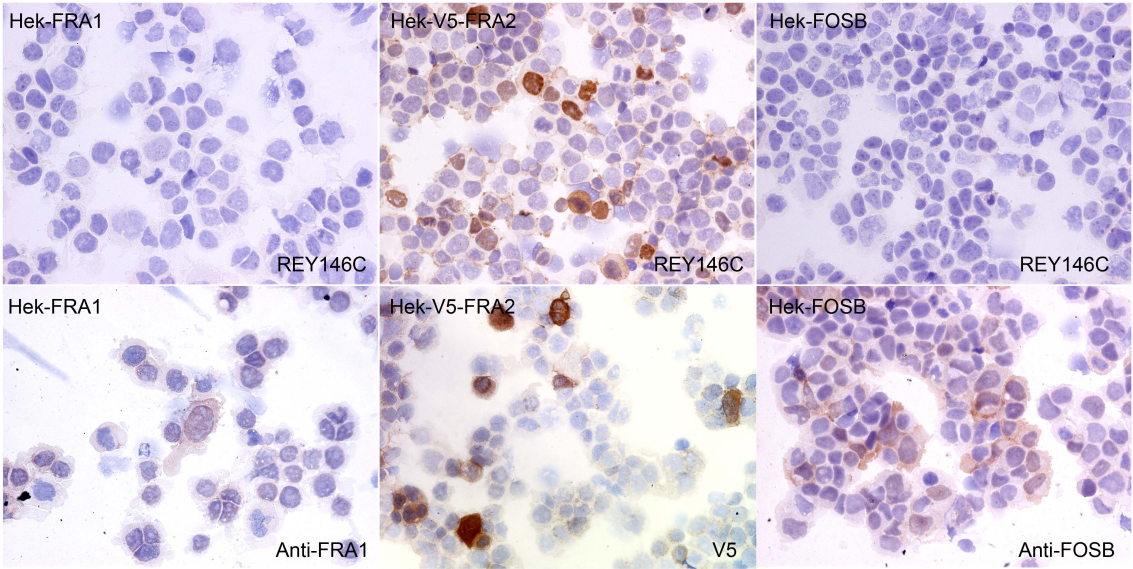
Wurm S, Zhang J, Guinea-Viniegra J, García F, Muñoz J, Bakiri L, Ezhkova E, Wagner EF. Terminal epidermal differentiation is regulated by the interaction of Fra-2/AP-1 with Ezh2 and ERK1/2. *Genes dev.* 2015 Jan 15;29 (2):144-56.

APPLICATIONS

IHC Techniques	Clone	Dilution	Antibody concentration	Antigen retrieval method	Visualization kit	Positive control	Negative control	Protein localization	Positivity in other species
Frozen tissue and cytopspins									
Recommended	REY146C	Neat supernatant							
Paraffin tissue									

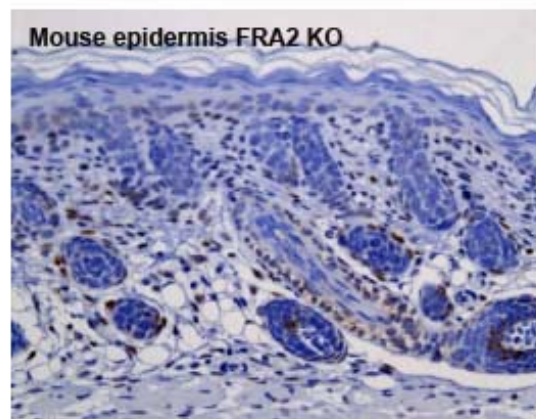
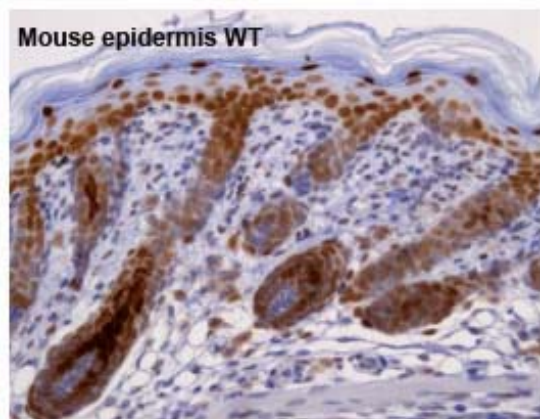
Recommended	REY146C	1:50							
-------------	---------	------	--	--	--	--	--	--	--

Immunofluorescence



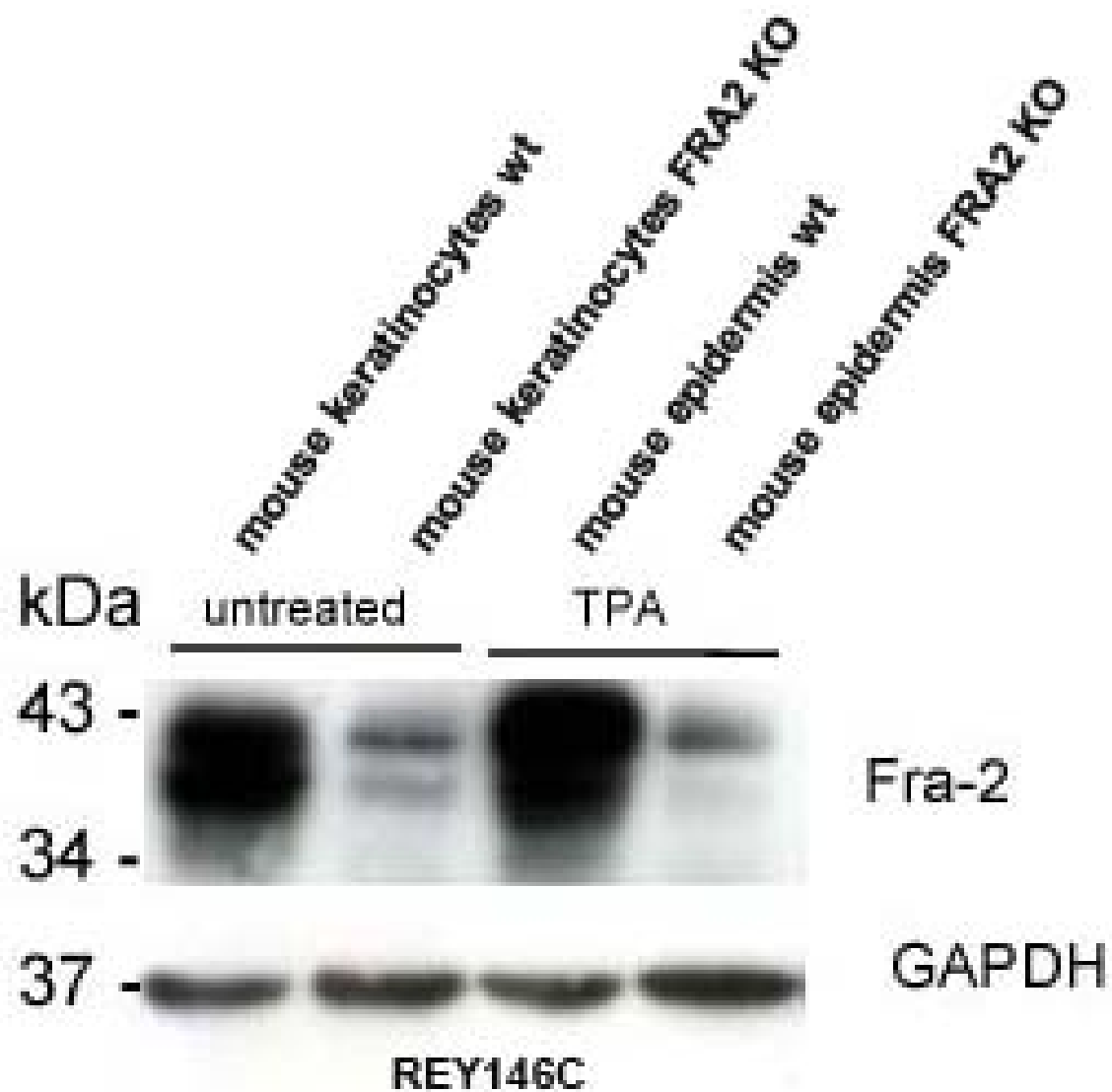
REY146C mAb in HEK293T transfected cells

To confirm that REY146C mAb recognized mouse FRA2 protein, immunohistochemistry on frozen cytopins preparations of V5-tagged mFRA2 expressed in Hek293T was performed. Cytospin preparation of mouse FRA1 and mouse FOSB transfected cells was used as negative controls to confirm the specificity of the antibody. Labeling with the anti-V5, anti-FOSB and anti-FRA1 antibodies confirmed the efficiency of the transfections.



REY146C antibody can be used to detect mouse FRA2 protein in paraffin embedded tissue samples.

WB Techniques	Clone	Dilution	Antibody concentration	Positive control	Negative control	Expected MW	Observed Mw	Positivity in other species
Western Blotting								
Recommended	REY146 C	1:100	Supernatant					
Immunoprecipitation								



REY146C mAb is able to detect mFRA2 protein by WB.

Lane 1 Mouse keratinocytes wt (100ug)

Lane 2 Mouse keratinocytes FRA2 KO (100ug)

Lane 3 Mouse epidermis wt (100ug)

Lane 4 Mouse epidermis FRA2 KO (100ug)