

SAA3

CONTACT INFORMATION:	Monoclonal Antibodies Unit. Centro Nacional de Investigaciones Oncológicas
STATUS:	Validated
TYPE:	Rat anti mouse
CLONE NAME:	JOR110A
PROTEIN:	Serum amyloid A-3 protein precursor
PROTEIN WEB:	http://www.ncbi.nlm.nih.gov/protein/6755396
ANTIGEN USED:	His-mSAA3 (20-122aa) recombinant protein
FUSION PARTNER:	NS1/Ag4-1 (NS1) cells
ISOTYPE:	iGg2b
SPECIES REACTIVITY:	mouse
PREPARATION AND STORAGE:	Aliquot and store at 4C. Do not freeze

DESCRIPTION

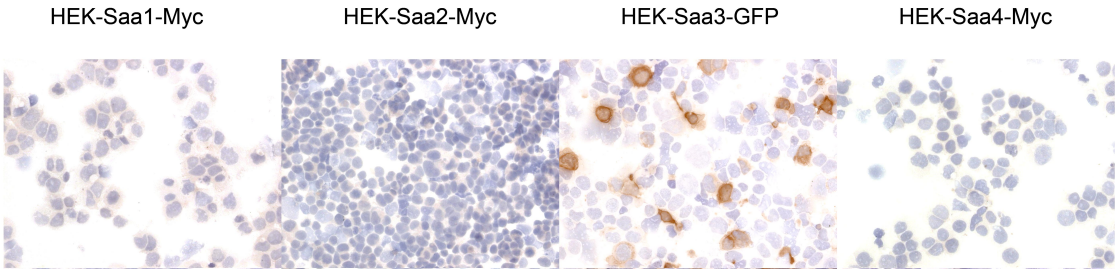
Serum amyloid A (SAA) proteins are proposed mediators of inflammation and metabolism, with increased serum levels being associated with obesity, chronic hyperglycemia, insulin resistance and cardiovascular disease. Mouse SAA3 (mSAA3) protein is known to be up-regulated extrahepatically in inflammatory responses, and acts as an endogenous ligand for the toll-like receptor 4/MD-2 complex. SAA3 also displays monocyte chemotactic activity and may play a role in metabolic inflammation.

APPLICATIONS

IHC Techniques	Clone	Dilution	Antibody concentration	Antigen retrieval method	Visualization kit	Positive control	Negative control	Protein localization	Positivity in other species
Frozen tissue and cytopins									
Recommended	JOR110A	Neat supernatant							
Paraffin tissue									

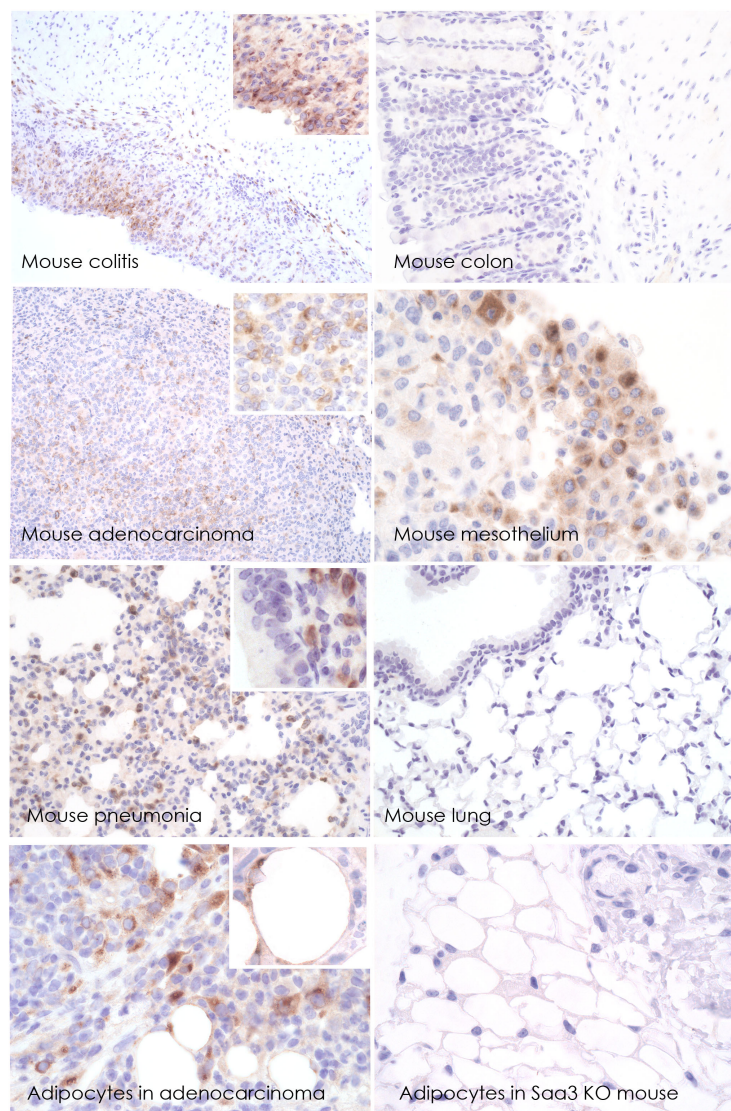
Recommended	JOR110A	Neat supernatant			Ventana				
-------------	---------	------------------	--	--	---------	--	--	--	--

Immunofluorescence



JOR110A in HEK293T transfected cells.

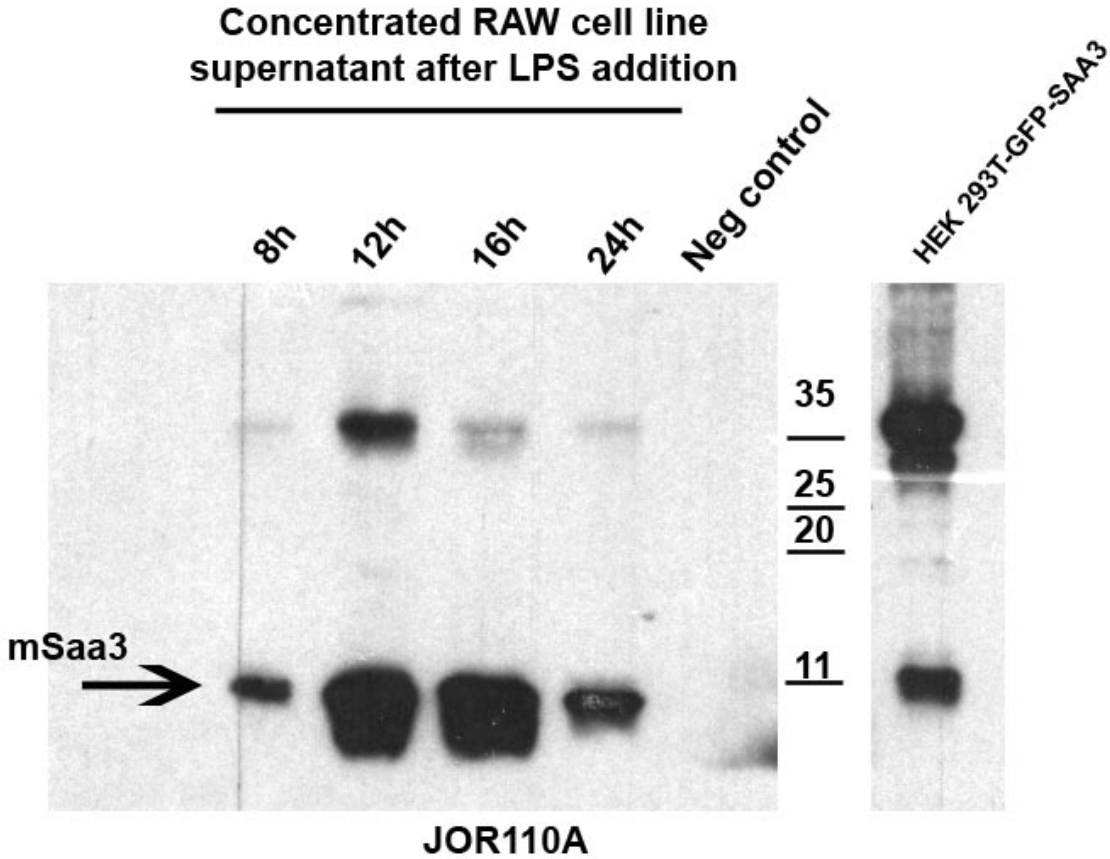
To confirm that JOR110A mAb recognized mSAA3 protein, immunohistochemistry on frozen cytopins preparations of MYC-tagged mSAA3 expressed in HEK 293T cell line was performed. Cytospin preparation of HEK 293T-MYC-mSAA1, HEK 293T-MYC-mSAA2 and HEK 293T-MYC-mSAA4 transfected cells were used to confirm the specificity of the antibody.



JOR110A mAb in mouse paraffin tissues.

JOR110A antibody can be used to detect mSAA3 protein in mouse paraffin embedded tissue samples.

WB Techniques	Clone	Dilution	Antibody concentration	Positive control	Negative control	Expected MW	Observed Mw	Positivity in other species
Western Blotting								
Recommended	JOR110A	Neat supernatant				13kDa	13kDa	
Immunoprecipitation								



JOR110A mAb in Western blotting technique

Since mSaa3 is a secreted protein we have collected and concentrated the supernatant from the RAW12 cell line (mouse macrophage) unstimulated (Neg control) and stimulated with LPS after 8, 12, 16 and 24 hours as reported in the attached article. A specific band of 13kDa has been detected in all activated LPS RAW12 cell lines, with the higher expression after 12 and 16 hour stimulation. No mSaa3 protein has been detected in the concentrated supernatant of the RAW12 cell line unstimulated.

Lane 1 RAW supernatant after 8 hours (20ul) (+)

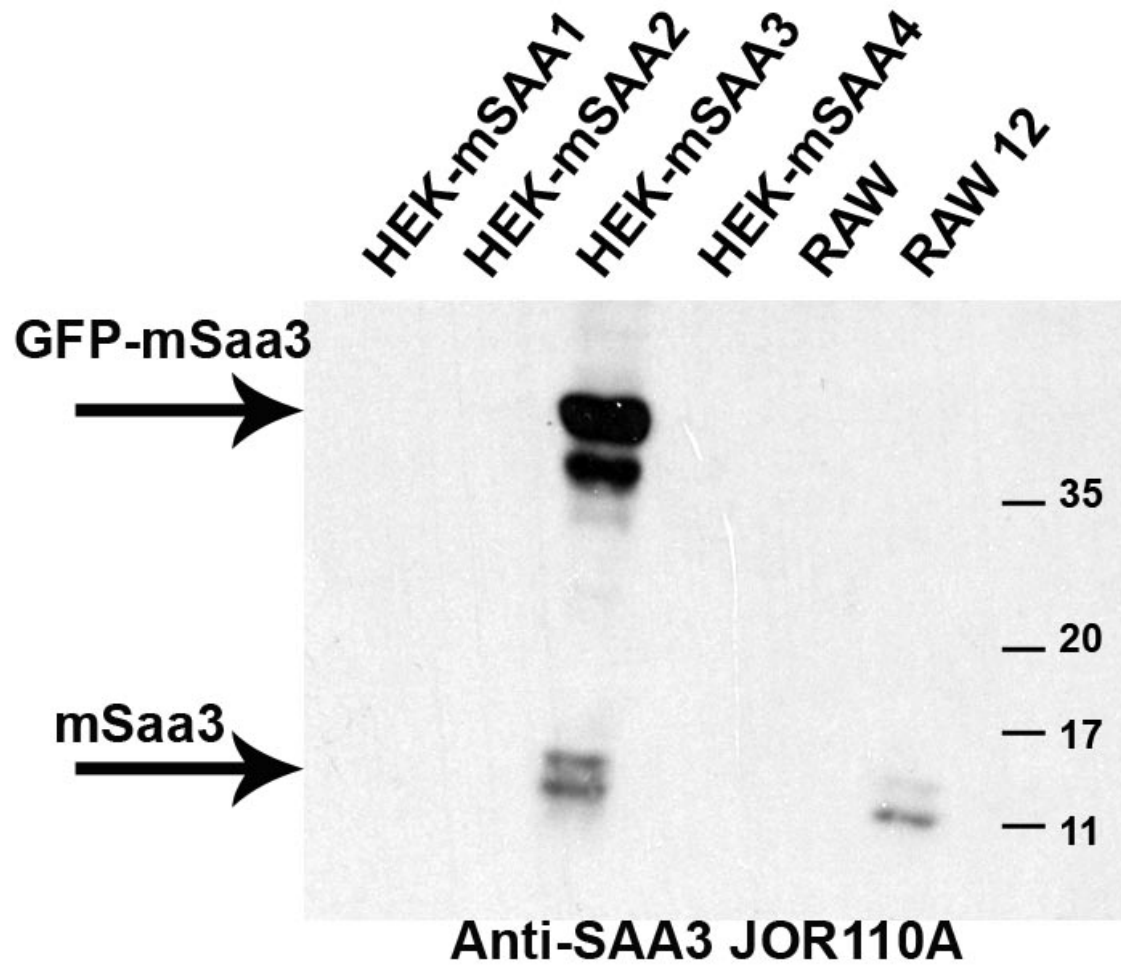
Lane 2 RAW supernatant after 12 hours (20ul) (+)

Lane 3 RAW supernatant after 16 hours (20ul) (+)

Lane 4 RAW supernatant after 24 hours (20ul) (+)

Lane 5 RAW supernatant unstimulated (20ul) (-)

Lane 6 HEK 293T-GFP-mSAA3 trasfected cells (20ug) (+)



JOR110A mAb in Western blotting technique

- Lane 1 HEK-mSAA1 transfected cells (10ug) (-)
- Lane 2 HEK-mSAA2 transfected cells (10ug) (-)
- Lane 3 HEK-mSAA3 transfected cells (10ug) (+)
- Lane 4 HEK-mSAA4 transfected cells (10ug) (-)
- Lane 5 RAW supernatant unstimulated (20ul) (-)

Lane 6 RAW supernatant stimulated 12h (20ul) (+)