

NGFR

CONTACT INFORMATION:	Monoclonal Antibodies Unit. Centro Nacional de Investigaciones Oncológicas
STATUS:	Validated
TYPE:	rat monoclonal
CLONE NAME:	NORI138B
PROTEIN:	NGFR Tumor necrosis factor receptor superfamily member 16
PROTEIN WEB:	https://www.uniprot.org/uniprot/Q9Z0W1
ANTIGEN USED:	His-mNGFR (276-427aa) protein
FUSION PARTNER:	myeloma p3-NS1/Ag4-1 (NS1) cells
ISOTYPE:	IgG2a
SPECIES REACTIVITY:	human and mouse
PREPARATION AND STORAGE:	Aliquot and store at 4C. Do not freeze

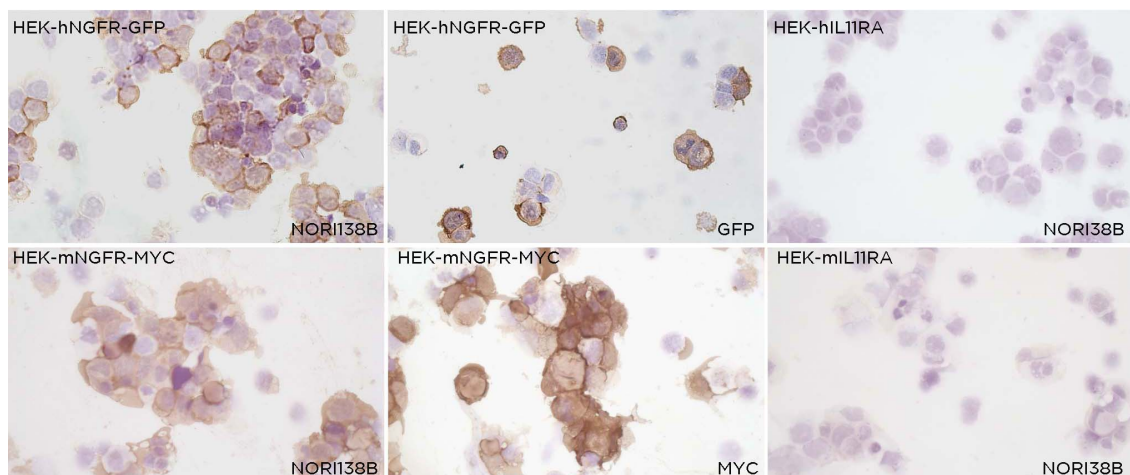
DESCRIPTION

Low affinity neurotrophin receptor which can bind to mature NGF, BDNF, NTF3, and NTF4. Forms a heterodimeric receptor with SORCS2 that binds the precursor forms of NGF (proNGF), BDNF (proBDNF) and NTF3 (proNT3) with high affinity, and has much lower affinity for mature NGF and BDNF. Plays an important role in differentiation and survival of specific neuronal populations during development. Can mediate cell survival as well as cell death of neural cells.

APPLICATIONS

IHC Techniques	Clone	Dilution	Antibody concentration	Antigen retrieval method	Visualization kit	Positive control	Negative control	Protein localization	Positivity in other species
Frozen tissue and cytopspins									
Recommended	NORI138B	neat	supernatant						
Paraffin tissue									

Immunofluorescence

**NORI138B mAb is able to detect human and mouse NGFR protein in immunocytochemistry.**

To confirm if NORI138B is specific for human and mouse NGFR protein, immunocytochemistry was performed on frozen cytospin preparations of HEK293 cells transfected with pcmv6-mNGFR-MYC-DDK and pLenti-hNGFR-mGFP. Labeling with the anti-GFP and anti-MYC mAbs confirmed the efficiency of transfection.