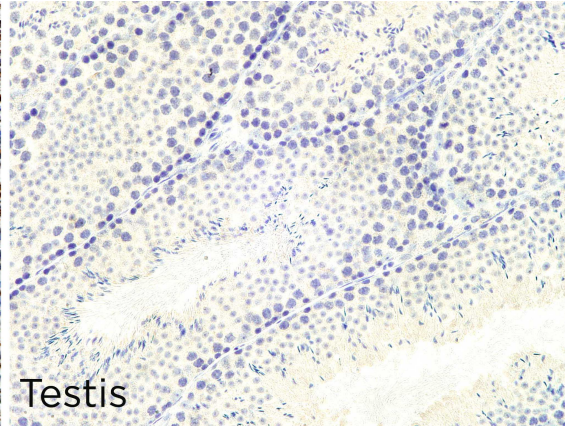
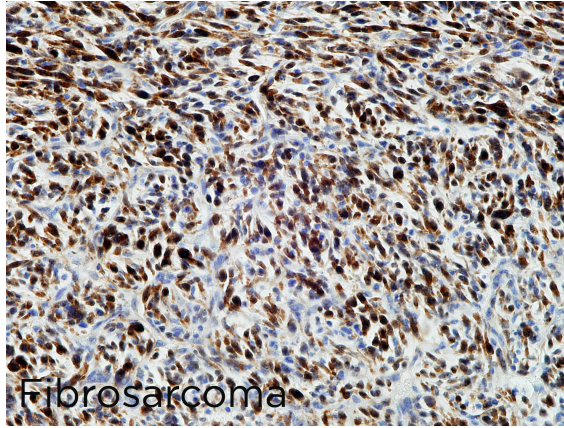


p15/p16

CONTACT INFORMATION: Monoclonal Antibodies Unit. Centro Nacional de Investigaciones Oncológicas
STATUS: Validated
TYPE: rat monoclonal
CLONE NAME: PABLO228C
PROTEIN: CDKN2a and CDKN2b
ANTIGEN USED: HIS-GST-mp16 recombinant protein
FUSION PARTNER: myeloma p3-NS1/Ag4-1 (NS1) cells
ISOTYPE: IgG1
SPECIES REACTIVITY: Mouse and human
PREPARATION AND STORAGE: Aliquot and store at 4C. Do not freeze

APPLICATIONS

IHC Techniques	Clone	Dilution	Antibody concentration	Antigen retrieval method	Visualization kit	Positive control	Negative control	Protein localization	Positivity in other species
Frozen tissue and cytopspins									
Paraffin tissue									
Recommended	PABL O228 C					fibrosarcoma	testis		
Immunofluorescence									



PABLO228c mAb can be used to detect p15/p16 proteins in mouse paraffin tissues