

CSF1R

CONTACT INFORMATION:	Monoclonal Antibodies Unit. Centro Nacional de Investigaciones Oncológicas
STATUS:	Validated
TYPE:	Rat monoclonal
CLONE NAME:	YEYE311D
PROTEIN:	Macrophage colony-stimulating factor 1 receptor
PROTEIN WEB:	https://www.uniprot.org/uniprot/P09581
ANTIGEN USED:	RBL1-mCSF1R-myc transfected cells
FUSION PARTNER:	NS1/Ag4-1 (NS1) cells
ISOTYPE:	IgG1
SPECIES REACTIVITY:	mouse
PREPARATION AND STORAGE:	Aliquot and store at 4C. Do not freeze

DESCRIPTION

Tyrosine-protein kinase that acts as cell-surface receptor for CSF1 and IL34 and plays an essential role in the regulation of survival, proliferation and differentiation of hematopoietic precursor cells, especially mononuclear phagocytes, such as macrophages and monocytes. Promotes the release of proinflammatory chemokines in response to IL34 and CSF1, and thereby plays an important role in innate immunity and in inflammatory processes. Plays an important role in the regulation of osteoclast proliferation and differentiation, the regulation of bone resorption, and is required for normal bone and tooth development. Required for normal male and female fertility, and for normal development of milk ducts and acinar structures in the mammary gland during pregnancy.

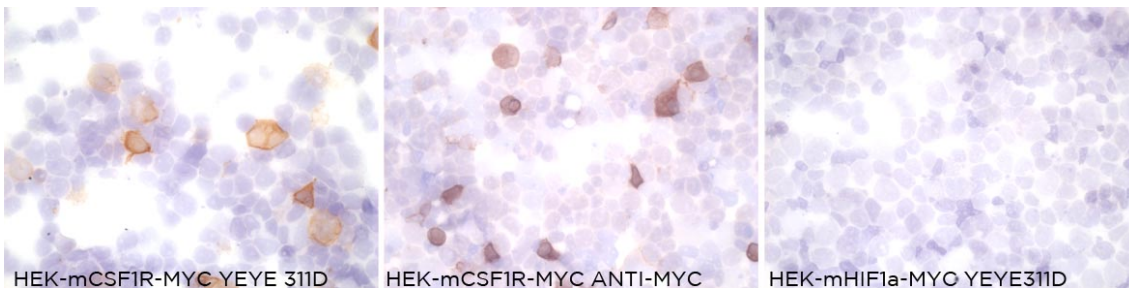
APPLICATIONS

IHC Techniques	Clone	Dilution	Antibody concentration	Antigen retrieval method	Visualization kit	Positive control	Negative control	Protein localization	Positivity in other species
Frozen tissue and cytopins									
Recommended	YEYE311E	Neat	supernatant						

Paraffin tissue

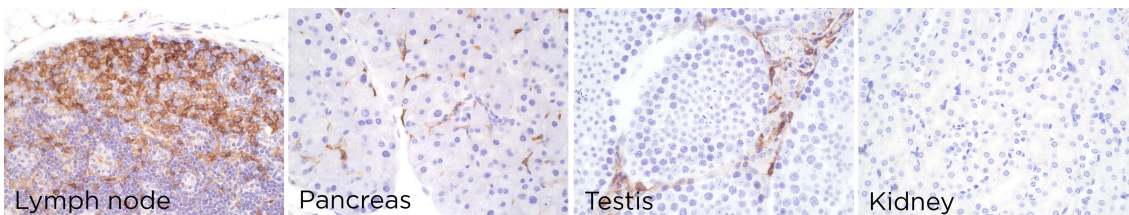
Recommended	YEYE 311E	1:4	supernatant			lymph node	Kidney	membrane	
-------------	-----------	-----	-------------	--	--	------------	--------	----------	--

Immunofluorescence



YEYE311 mAb is able to detect mouse Csf1r protein in immunocytochemistry

To confirm that YEYE311 mAb recognizes mouse Csf1r protein, immunocytochemistry on frozen cytopins preparation of mouse Csf1r expressed in HEK293T was performed. Anti-MYC Ab was used as a positive control. Cytospin preparation of mouse HIF1A protein was used as negative control.



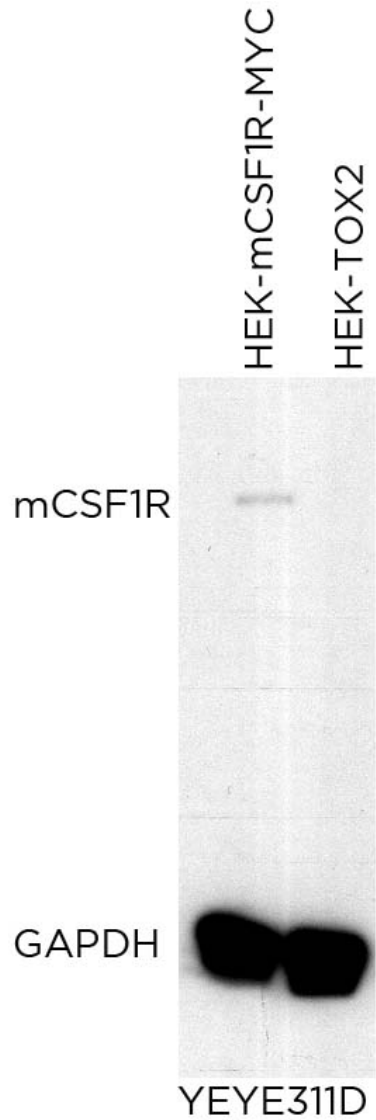
YEYE311D antibody can be used to detect mouse Csf1r protein in mouse paraffin tissues

WB Techniques	Clone	Dilution	Antibody concentration	Positive control	Negative control	Expected MW	Observed Mw	Positivity in other species
Western Blotting								

Monoclonal Antibodies Catalogue

Recommended	YEYE311 D	Neat	supernatant			109kDa	109kDa	
-------------	--------------	------	-------------	--	--	--------	--------	--

Immunoprecipitation



YEYE311D mAb is able to detect mouse Csf1r over expression by WB.

Predicted molecular weight: 109KDa

Observed molecular weight: 109KDA

Lanes

Lane 1 HEK-mCsf1r-MYC (100ug) (+)

Lane 2 HEK-TOX2 (100ug) (-)