

TOX2

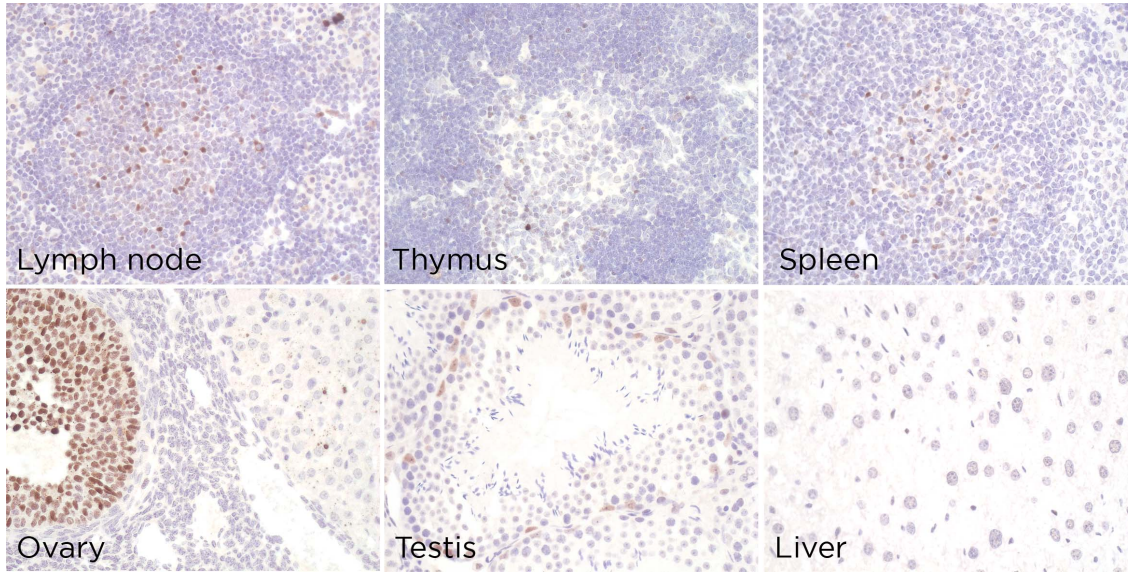
CONTACT INFORMATION: Monoclonal Antibodies Unit. Centro Nacional de Investigaciones Oncológicas
STATUS: Validated
TYPE: Rat monoclonal
CLONE NAME: SHAW464B
PROTEIN: TOX high mobility group box family member 2
PROTEIN WEB: <https://www.uniprot.org/uniprot/Q96NM4>
ANTIGEN USED: <https://www.uniprot.org/uniprot/E9Q0B9>
FUSION PARTNER: NS1/Ag4-1 (NS1) cells
ISOTYPE: IgM
SPECIES REACTIVITY: Human and mouse
PREPARATION AND STORAGE: Aliquot and store at 4C. Do not freeze

DESCRIPTION

Putative transcriptional activator involved in the hypothalamo-pituitary-gonadal system.

APPLICATIONS

IHC Techniques	Clone	Dilution	Antibody concentration	Antigen retrieval method	Visualization kit	Positive control	Negative control	Protein localization	Positivity in other species
Frozen tissue and cytopins									
Paraffin tissue									
Recommended	SHAW 464B	Neat	supernatant		Discovery XT	Ovary		nuclear	
Immunofluorescence									



SHAW464B antibody can be used to detect TOX2 protein in mouse paraffin tissues.