

## BCL6

<b>CONTACT INFORMATION:</b>	Monoclonal Antibodies Unit. Centro Nacional de Investigaciones Oncológicas
<b>STATUS:</b>	Validated
<b>TYPE:</b>	mouse anti mouse
<b>CLONE NAME:</b>	GI191E
<b>PROTEIN:</b>	human full length BCL6
<b>PROTEIN WEB:</b>	<a href="http://www.hprd.org/summary?hprd_id=00180&amp;isoform_id=00180_3&amp;isoform_name=Isoform_1">http://www.hprd.org/summary?hprd_id=00180&amp;isoform_id=00180_3&amp;isoform_name=Isoform_1</a>
<b>ANTIGEN USED:</b>	pcDNA3-BCL6
<b>FUSION PARTNER:</b>	NS1/Ag4-1 (NS1) cells
<b>ISOTYPE:</b>	IgG1
<b>SPECIES REACTIVITY:</b>	human and mouse
<b>PREPARATION AND STORAGE:</b>	Aliquot and store at 4C. Do not freeze
<b>APP RECOMMENDED:</b>	WB, IHC-frozen, IHC-paraffin
<b>APP NO TESTED:</b>	IP, IF, Flow Cytometry

### DESCRIPTION

---

BCL-6 is a transcriptional regulator gene which codes for a 706-amino-acid nuclear zinc finger protein. Antibodies to this protein stain the germinal centre cells in lymphoid follicles, the follicular cells and interfollicular cells in Follicular Lymphoma, Diffuse Large B-Cell Lymphomas, and Burkitt's lymphoma, and the majority of the Reed-Sternberg cells in Nodular Lymphocyte Predominant Hodgkin's Disease. In contrast, anti-BCL-6 rarely stains Mantle Cell Lymphoma and MALT Lymphoma. BCL-6 expression is seen in approximately 45% of CD30+ Anaplastic Large Cell Lymphoma but is consistently absent in other peripheral T-cell lymphomas.

### PUBLICATION DESCRIBING ANTIBODY CHARACTERIZATION/VALIDATION

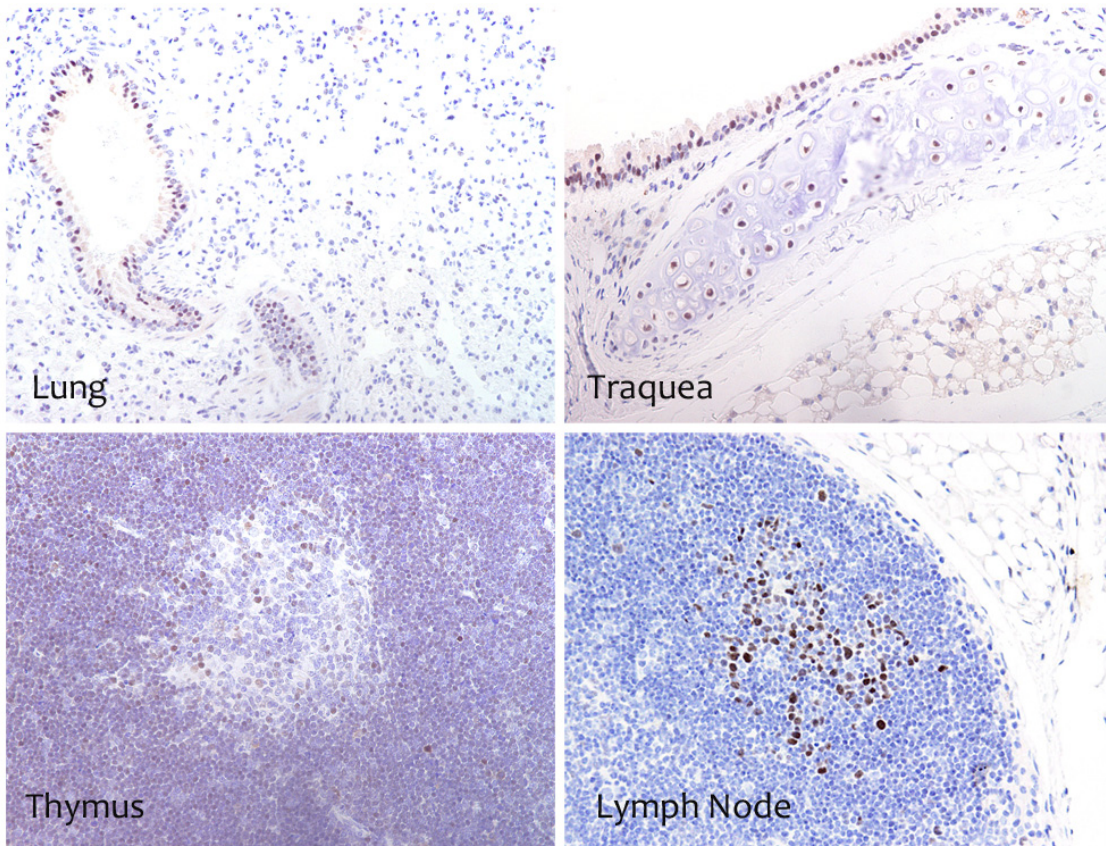
---

García JF, García JF, Maestre L, Lucas E, Sánchez-Verde L, Romero-Chala S, Piris MA, Roncador G. Genetic Immunization: a New Monoclonal Antibody for the Detection of BCL-6 Protein in Paraffin Sections. *J Histochem Cytochem.* 2006 54(1):31-8.

<http://www.ncbi.nlm.nih.gov/pubmed/16046671>

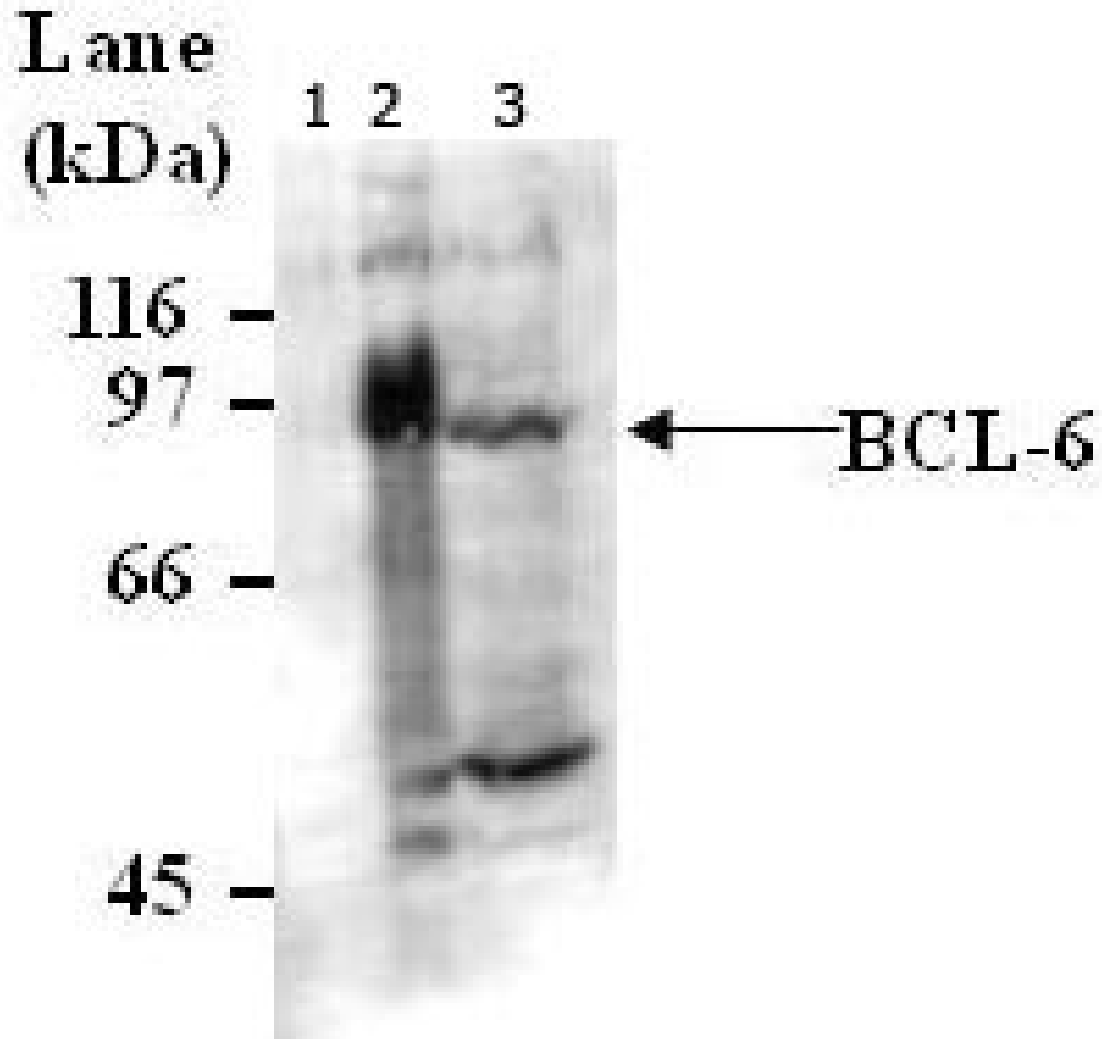
**APPLICATIONS**

IHC Techniques	Clone	Dilution	Antibody concentration	Antigen retrieval method	Visualization kit	Positive control	Negative control	Protein localization	Positivity in other species
<b>Frozen tissue and cytopins</b>									
<b>Paraffin tissue</b>									
Recommended	GI191 E	neat	supernatant	Discovery Xt CC1 OmniMap	Ventana	Lymph node		nuclear	human
<b>Immunofluorescence</b>									



**MAb IG191E in mouse tissue**

WB Techniques	Clone	Dilution	Antibody concentration	Positive control	Negative control	Expected MW	Observed Mw	Positivity in other species
<b>Western Blotting</b>								
Recommended	GI191E	supernatant	1:20	WR19L cell line	Ba/F3 cell line	78kDa	80kDa	human
<b>Immunoprecipitation</b>								



**Western Blotting of BCL6 (G1191E)**

Western Blotting of BCL6 (G1191E) using different mouse and rat cell lines.

Lane 1 Ba/F3 mouse cell line (10ug) (-)

Lane 2 WR19L mouse cell line (50ug) (+)

Lane 3 PC12 rat cell line (50ug) (+)