

EED

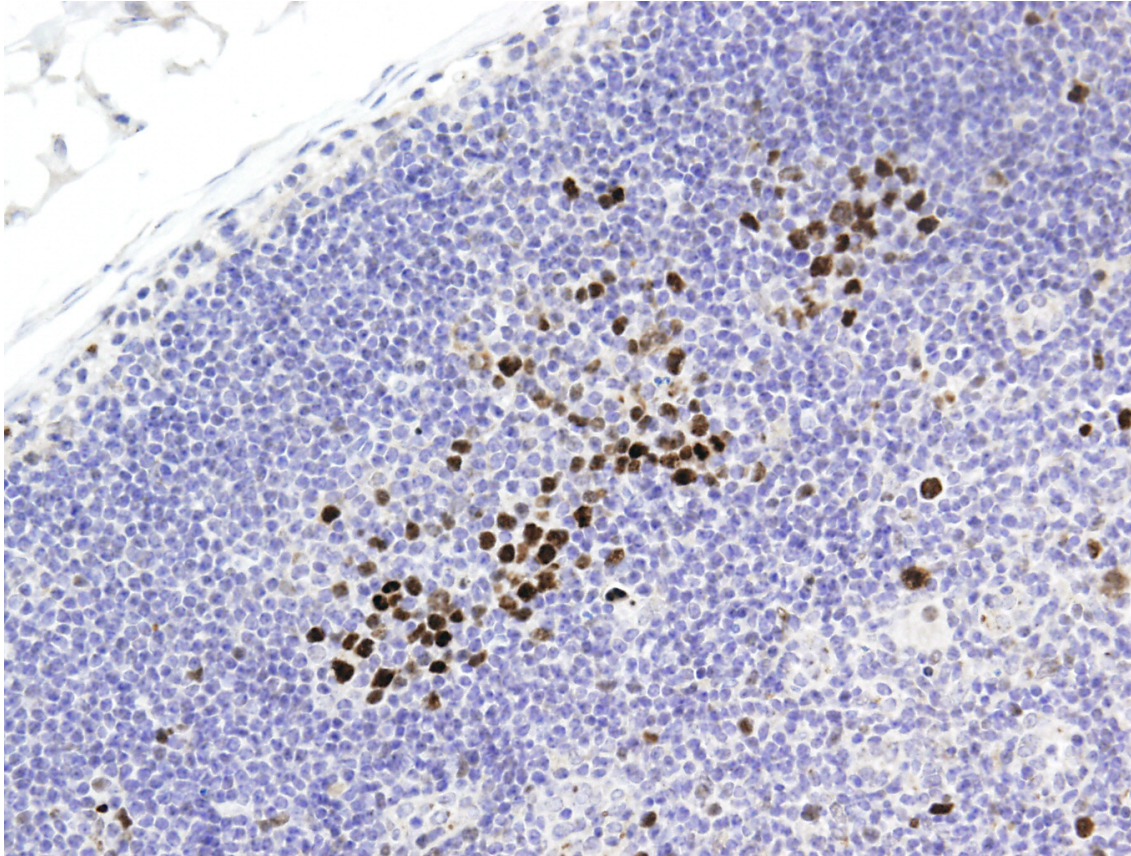
CONTACT INFORMATION:	Monoclonal Antibodies Unit. Centro Nacional de Investigaciones Oncológicas
TYPE:	mouse anti mouse
CLONE NAME:	163C
PROTEIN:	Human full length EED (Embryonic ectoderm development)
PROTEIN WEB:	http://www.hprd.org/alternate?hprd_id=09343&isoform_id=09343_1&isoform_name=Isoform_1
ANTIGEN USED:	His-EED full length protein
FUSION PARTNER:	myeloma p3-NS1/Ag4-1 (NS1) cell
ISOTYPE:	IgG2a
SPECIES REACTIVITY:	human and mouse
PREPARATION AND STORAGE:	Aliquot and store at 4C. Do not freeze
COMMERCIALIZED BY:	Active Motif

DESCRIPTION

This gene encodes a member of the Polycomb-group (PcG) family. PcG family members form multimeric protein complexes, which are involved in maintaining the transcriptional repressive state of genes over successive cell generations.

APPLICATIONS

IHC Techniques	Clone	Dilution	Antibody concentration	Antigen retrieval method	Visualization kit	Positive control	Negative control	Protein localization	Positivity in other species
Frozen tissue and cytopins									
Paraffin tissue									
Recommended	163C	1:75	Supernatant	Discovery Xt CC1 OmniMap	Ventana	lymph node		Nuclear	human
Immunofluorescence									



Anti-EED antibody (163C) in mouse lymph node paraffin section In lymph node, EED protein is strongly expressed by germinal center cells.