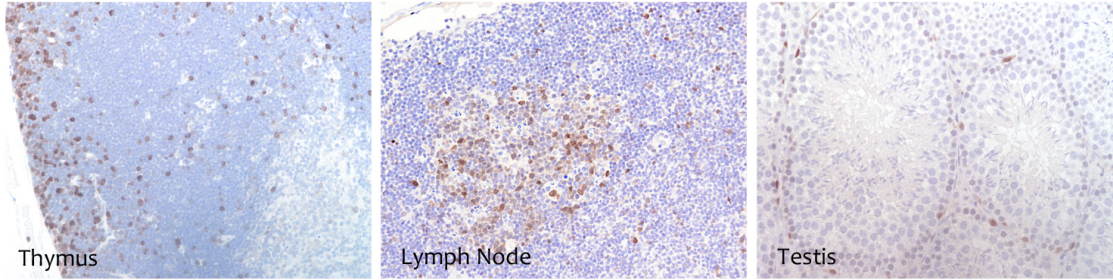


CDK6

CONTACT INFORMATION: Monoclonal Antibodies Unit. Centro Nacional de Investigaciones Oncológicas
STATUS: Validated
TYPE: mouse anti mouse
CLONE NAME: 98D
PROTEIN: Cyclin dependent kinase 6
PROTEIN WEB: <http://www.ncbi.nlm.nih.gov/protein/AAD43504.1>
ANTIGEN USED: His-mCDK6 recombinant protein (full length)
FUSION PARTNER: myeloma p3-NS1/Ag4-1 (NS1) cell
ISOTYPE: IgG1
SPECIES REACTIVITY: human and mouse
PREPARATION AND STORAGE: Aliquot and store at 4C. Do not freeze

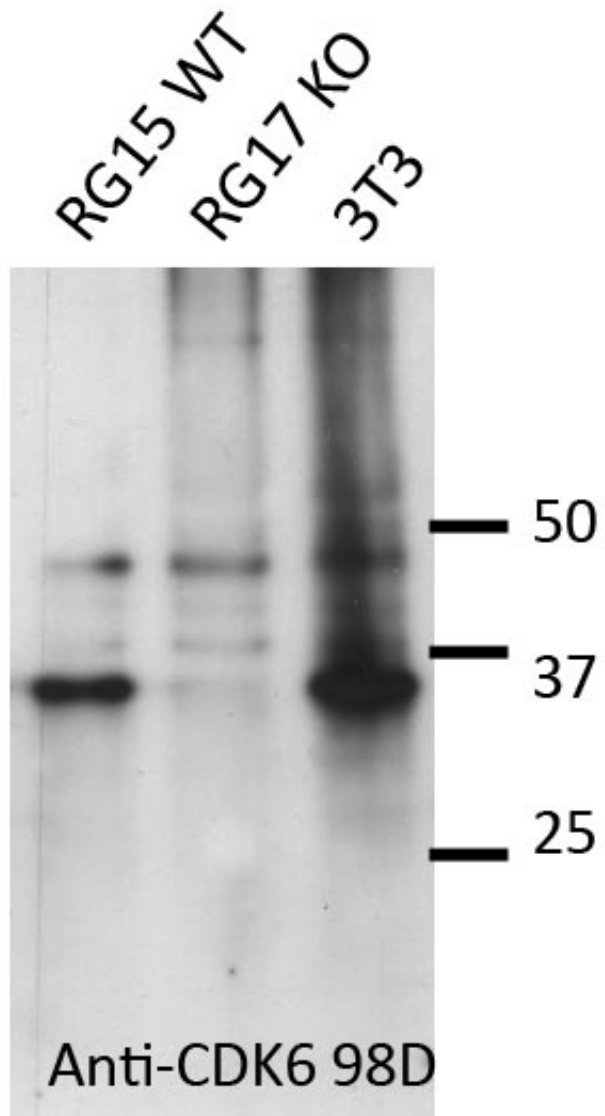
APPLICATIONS

IHC Techniques	Clone	Dilution	Antibody concentration	Antigen retrieval method	Visualization kit	Positive control	Negative control	Protein localization	Positivity in other species
Frozen tissue and cytopins									
Paraffin tissue									
Recommended	98D	neat	supernatant	Discovery Xt Std RiboCC	Ventana	lymph node			mouse
Immunofluorescence									



mAb 98D in mouse tissue

WB Techniques	Clone	Dilution	Antibody concentration	Positive control	Negative control	Expected MW	Observed Mw	Positivity in other species
Western Blotting								
Recommended	98D		supernatant	3T3 cell line		37kDa	37kDa	mouse
Immunoprecipitation								



Western Blotting of CDK6 (98D) using different mouse cell and tissues extracts

Lane 1 RG15WT (200ug)

Lane 2 RG17KO (200ug)

Lane 3 3T3 cell line (200ug)