

FOXP3

CONTACT INFORMATION:	Monoclonal Antibodies Unit. Centro Nacional de Investigaciones Oncológicas
STATUS:	Validated
TYPE:	mouse anti mouse
CLONE NAME:	221D
PROTEIN:	Human full length FOXP3
ANTIGEN USED:	GST-FOXP3 recombinant protein
FUSION PARTNER:	myeloma p3-NS1/Ag4-1 (NS1) cells
ISOTYPE:	IgG1
SPECIES REACTIVITY:	human, mouse, cat, dog, horse, rabbit, alpaca and pig.
PREPARATION AND STORAGE:	Aliquot and store at 4C. Do not freeze
APP RECOMMENDED:	IHQ-paraffin, IHQ-frozen, WB, Flow cytometry, IF
APP NO TESTED:	IP

DESCRIPTION

FOXP3 is a forkhead-family transcription factor that negatively regulates T cell function. Mice carrying a loss-of-function mutation in FoxP3 present with fatal autoimmune-like disease caused by hyperresponsive CD4(+) T cells. Mice that overexpress scurfin possess fewer mature T cells with reduced functional capabilities compared with normal littermate control mice. FOXP3 is critical for normal CD4+ T cell function and for the successful coordination of a normal response to immunological challenge in vivo.

PUBLICATION DESCRIBING ANTIBODY CHARACTERIZATION/VALIDATION

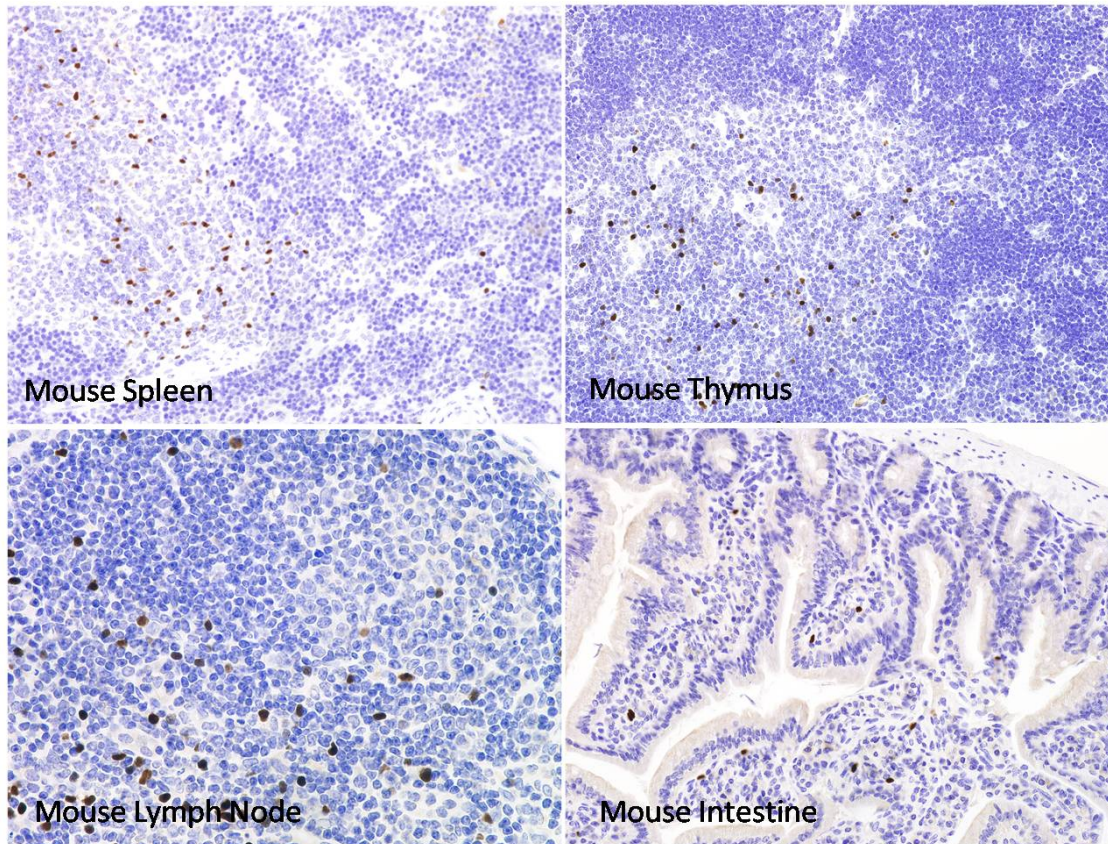
Roncador G, Brown PJ, Maestre L, Hue S, Martínez-Torrecuadrada JL, Ling KL, Pratap S, Toms C, Fox BC, Cerundolo V, Powrie F, Banham AH. Analysis of FOXP3 protein expression in human CD4(+)CD25(+) regulatory T cells at the single-cell level. Eur J Immunol 2005 35:1681-1691. <http://www.ncbi.nlm.nih.gov/pubmed/15902688>

Banham AH, Lyne L, Scase TJ, Blacklaws BA. Monoclonal antibodies raised to the human FOXP3 protein can be used effectively for detecting Foxp3(+) T cells in other mammalian species. Vet Immunol Immunopathol. 2009 Feb 15;127(3-4):376-81.

<http://www.sciencedirect.com/science/article/pii/S0165242708007083>

APPLICATIONS

IHC Techniques	Clone	Dilution	Antibody concentration	Antigen retrieval method	Visualization kit	Positive control	Negative control	Protein localization	Positivity in other species
Frozen tissue and cytopins									
Paraffin tissue									
Recommended	221D	neat	supernatant	OmniMap Mild CC1	Ventana	lymph node		nuclear	human
Immunofluorescence									



Anti-FOXP3 221D in mouse paraffin sections.