

SUZ12

CONTACT INFORMATION:	Monoclonal Antibodies Unit. Centro Nacional de Investigaciones Oncológicas
STATUS:	Validated
TYPE:	mouse anti mouse
CLONE NAME:	124C
PROTEIN:	human SUZ12
PROTEIN WEB:	http://www.ncbi.nlm.nih.gov/protein/197333809
ANTIGEN USED:	MBP-SUZ12 recombinant protein
FUSION PARTNER:	NS1/Ag4-1 (NS1) cells
ISOTYPE:	IgG1
SPECIES REACTIVITY:	Human and mouse
PREPARATION AND STORAGE:	Aliquot and store at 4C. Do not freeze
APP RECOMMENDED:	IHQ-paraffin, IHQ-frozen, IF, WB
APP NO TESTED:	Flow cytometry, IP

DESCRIPTION

This zinc finger gene has been identified at the breakpoints of a recurrent chromosomal translocation reported in endometrial stromal sarcoma. Recombination of these breakpoints results in the fusion of this gene and JAZF1. The protein encoded by this gene contains a zinc finger domain in the C terminus of the coding region.

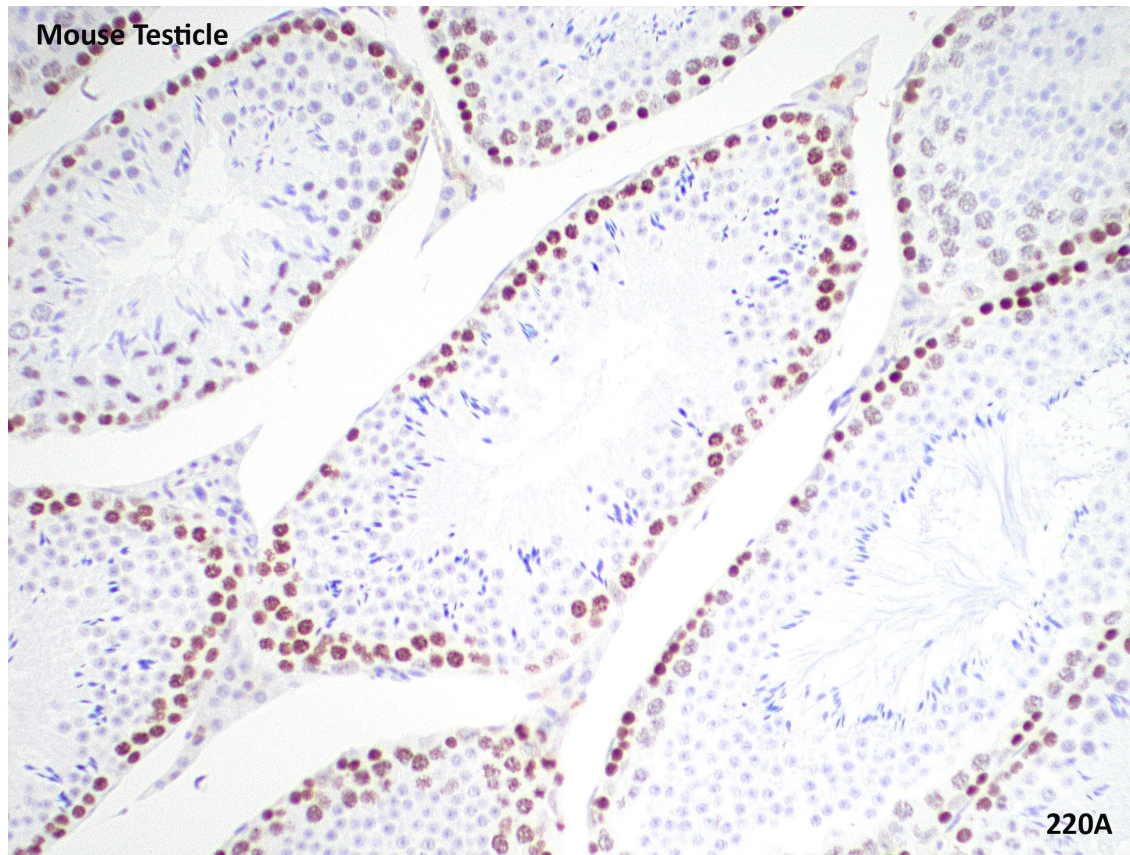
PUBLICATION DESCRIBING ANTIBODY CHARACTERIZATION/VALIDATION

Deregulated expression of the polycomb-group protein SUZ12 target genes characterizes mantle cell lymphoma. Martín-Pérez D, Sánchez E, Maestre L, Suela J, Vargiu P, Di Lisio L, Martínez N, Alves J, Piris MA, Sánchez-Beato M. Am J Pathol 2010 Aug;177(2):930-42. <http://www.ncbi.nlm.nih.gov/pubmed?term=maestre%20%20sanchez-beato%20m>

APPLICATIONS

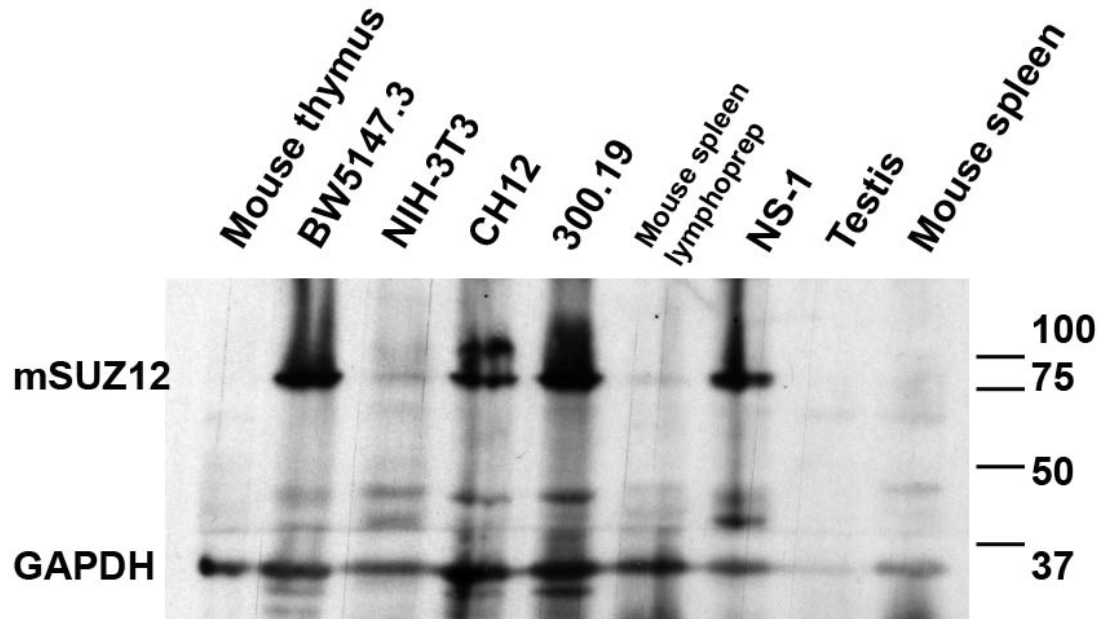
Monoclonal Antibodies Catalogue

IHC Techniques	Clone	Dilution	Antibody concentration	Antigen retrieval method	Visualization kit	Positive control	Negative control	Protein localization	Positivity in other species
Frozen tissue and cytopspins									
Paraffin tissue									
Recommended	124C	1:50	purified 1mg/ml	Discovery Xt CC1 OmniMap	Ventana	testicle		nuclear	human
Immunofluorescence									



Anti-SUZ12 antibody (124C) in mouse testicle paraffin section

WB Techniques	Clone	Dilution	Antibody concentration	Positive control	Negative control	Expected MW	Observed Mw	Positivity in other species
Western Blotting								
Recommended	124C	Undiluted	supernatant	NS-1 cell line		82kDa	82kDa	
Immunoprecipitation								



Anti-mSUZ12 124C mAb

Western blotting of anti-SUZ12 (124C) in different mouse cell lines and tissues

GAPDH was used as loading control

- Lane 1 mouse thymus (100ug)
- Lane 2 BW5147.3 cell line (100ug)
- Lane 3 NIH-3T3 cell line (100ug)
- Lane 4 CH12 cell line (100ug)
- Lane 5 300.19 cell line (100ug)
- Lane 6 mouse spleen lymphoprep (100ug)
- Lane 7 NS-1 cell line (100ug)
- Lane 8 mouse testis (100ug)
- Lane 9 mouse spleen (100ug)