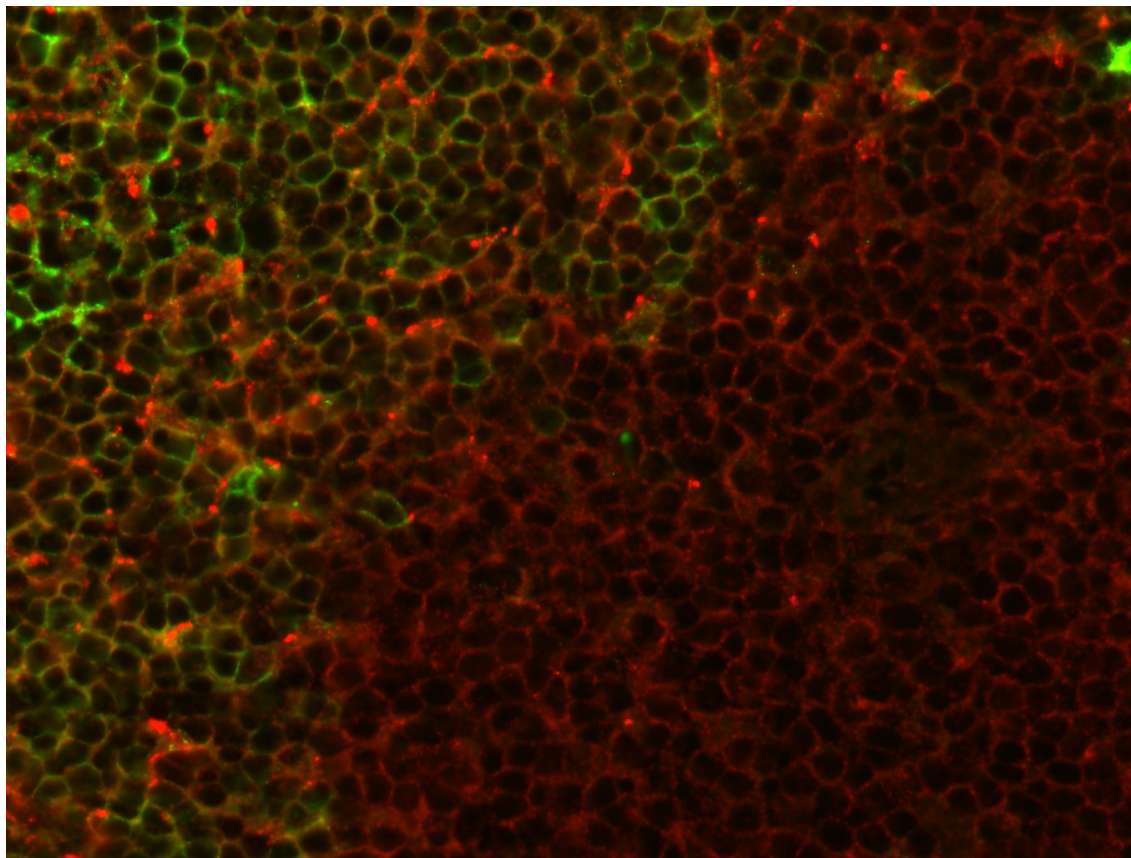


mouse Ly9.1 (allotype 1 specific)

CONTACT INFORMATION:	Immunology Unit. Faculty of Medicine and Medical Sciences, University of Barcelona
STATUS:	Validated
TYPE:	Mouse anti-mouse
CLONE NAME:	mLy9.10.33
PROTEIN:	mouse Ly9 (CD229)
ANTIGEN USED:	300.19 pre-B cell line
FUSION PARTNER:	NS1 cells
ISOTYPE:	IgG1 (kappa)
SPECIES REACTIVITY:	Mouse
PREPARATION AND STORAGE:	Aliquot and store at 4°C. Do not freeze
APP RECOMMENDED:	Flow cytometry, ELISA, IP, IF
APP NO RECOMMENDED:	IHQ-paraffin, WB

APPLICATIONS

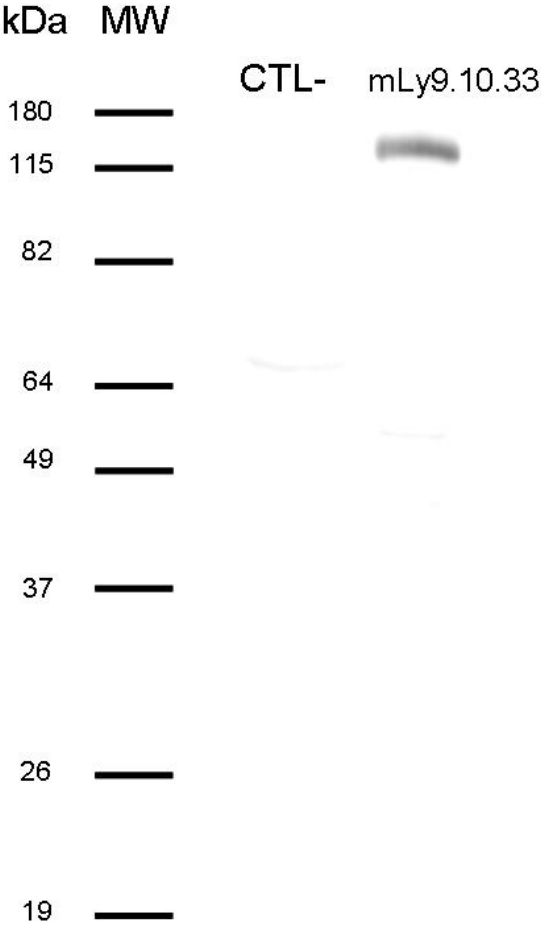
IHC Techniques	Clone	Dilution	Antibody concentration	Antigen retrieval method	Visualization kit	Positive control	Negative control	Protein localization	Positivity in other species
Frozen tissue and cytopins									
Paraffin tissue									
Immunofluorescence									
	mLy9.10.33	1/50	0.34 mg/ml	No				Membrane	Not done



Immunofluorescence staining

Double staining in frozen mouse spleen. In red, Biotin mLy9.10.33 (with Streptavidin A555); in green, mIgM FITC conjugated

WB Techniques	Clone	Dilution	Antibody concentration	Positive control	Negative control	Expected MW	Observed Mw	Positivity in other species
Western Blotting								
Immunoprecipitation								
Recommended	mLy9.10.33		2 ug/ml		Unrelated mAb	110-120	120	Not done

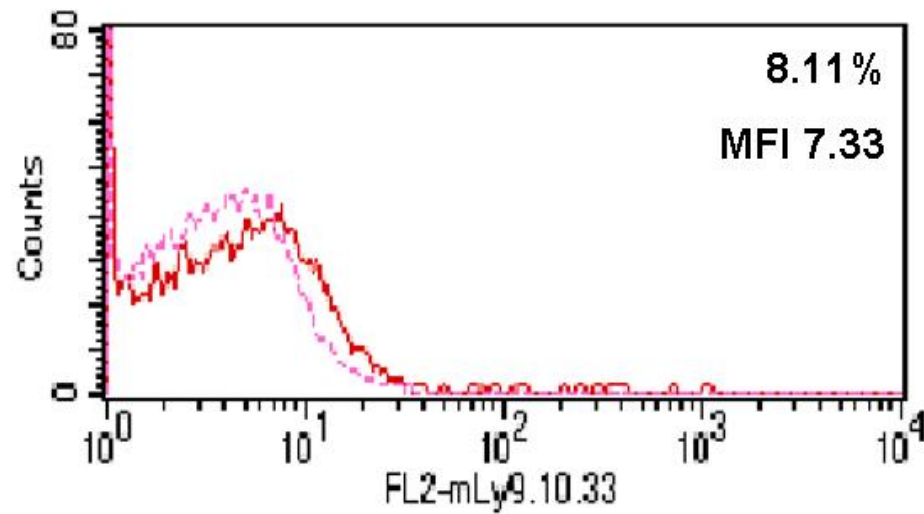


IP of mLy9.10.33

Immunoprecipitation with 1 ml Supernatant, using Sepharose beads with protein G and biotin labeled 300.19 cells

FLOW CYTOMETRY	Clone	Dilution	Positive control	Negative control	Type of fluorocrom
Recommended	10.33 cIA	1/2	Thymus Ly9 WT mice	Thymus Ly9 KO mice	Phycoerythrin

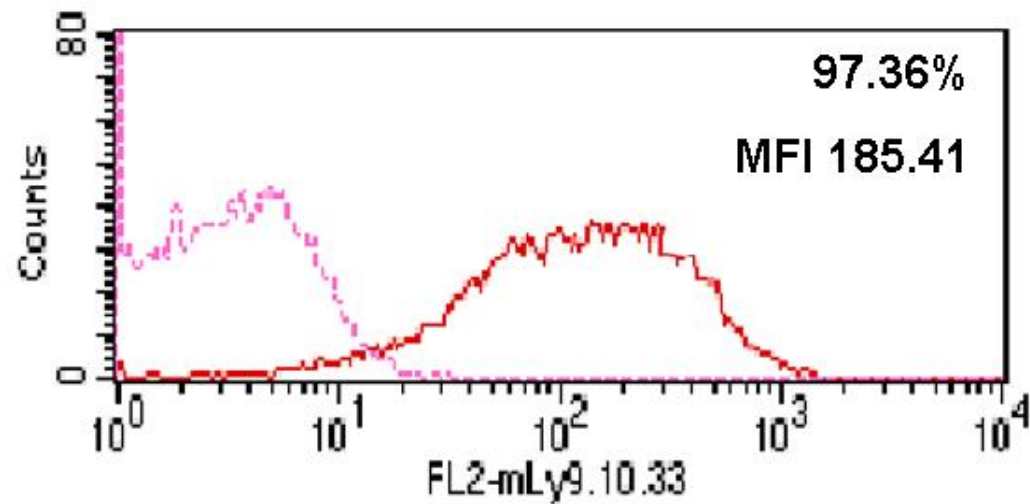
Thymocytes Balb/c Ly9^{-/-}



Thymus Ly9 KO Balb/c mouse

Flow cytometry with thymocytes of a Balb/c Ly9 KO mouse using anti-Mouse PE conjugated as secondary antibody.

Thymocytes Balb/c WT



Thymus Ly9 WT Balb/c mouse

Flow cytometry with thymocytes of a Balb/c Ly9 WT mouse using anti-Mouse PE conjugated as secondary antibody.