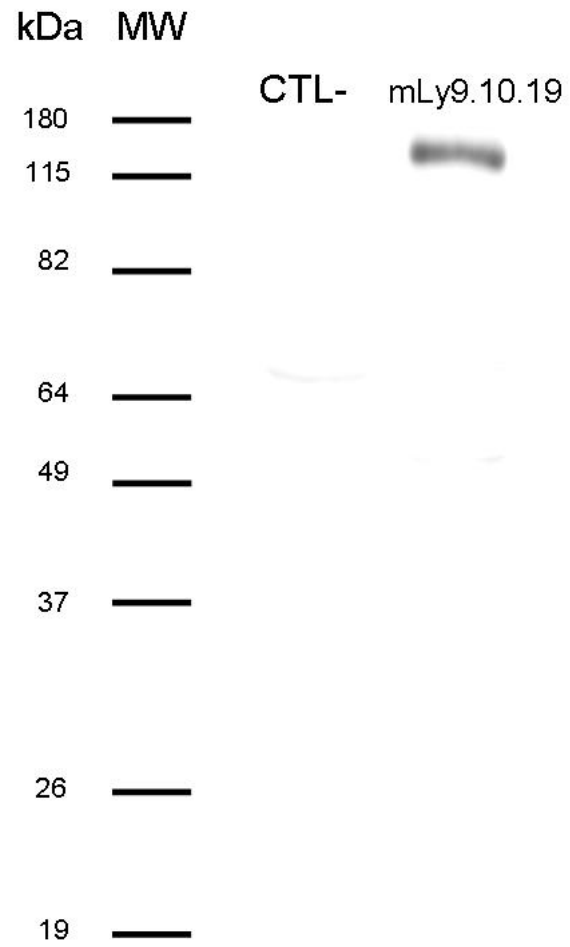


Ly9 (recognizes Ly9.1 and Ly9.2)

CONTACT INFORMATION:	Immunology Unit. Faculty of Medicine and Medical Sciences, University of Barcelona
TYPE:	Mouse anti-mouse
CLONE NAME:	mLy9.10.19
PROTEIN:	mouse Ly9 (CD229)
ANTIGEN USED:	300.19 pre-B cell line
FUSION PARTNER:	NS1 cells
ISOTYPE:	IgG1 (kappa)
SPECIES REACTIVITY:	Mouse
PREPARATION AND STORAGE:	Aliquot and store at 4°C. Do not freeze
APP RECOMMENDED:	Flow cytometry, ELISA, IP
APP NO RECOMMENDED:	IHQ-paraffin, WB
APP NO TESTED:	IF

APPLICATIONS

WB Techniques	Clone	Dilution	Antibody concentration	Positive control	Negative control	Expected MW	Observed Mw	Positivity in other species
Western Blotting								
Immunoprecipitation								
	mLy9.10.19		2 ug/ml		Unrelated mAb	110-120	120	Not done

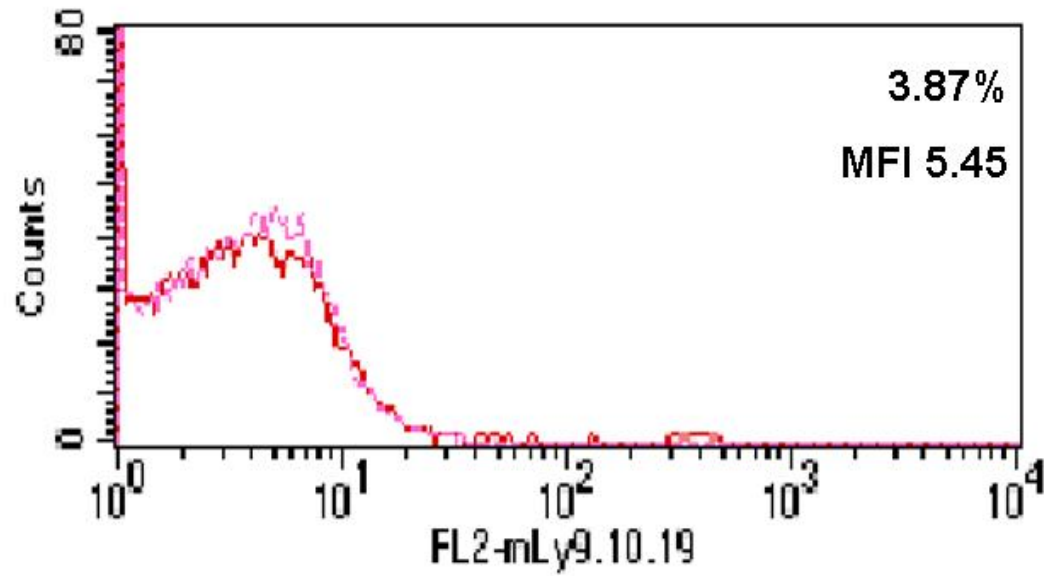


IP of mLy9.10.19

Immunoprecipitation with 1 ml Supernatant, using biotin labeled 300.19 cells and Sepharose beads with protein G.

OTHERS	Title	Description
	test	

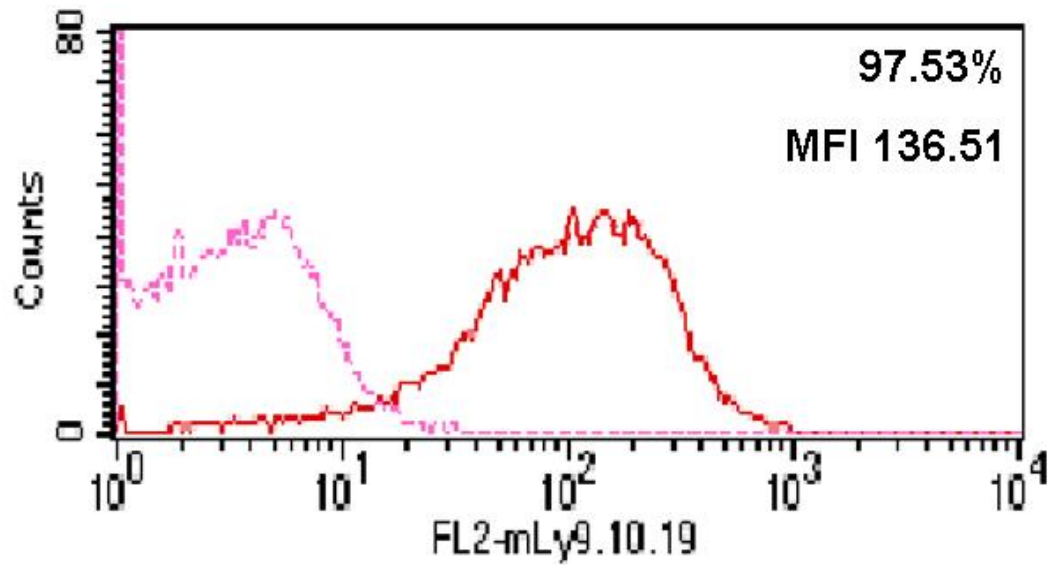
Thymocytes Balb/c Ly9^{-/-}



Thymus Ly9 KO mouse

Flow cytometry with thymocytes of a Balb/c Ly9 KO mouse using anti-Mouse PE conjugated as secondary antibody

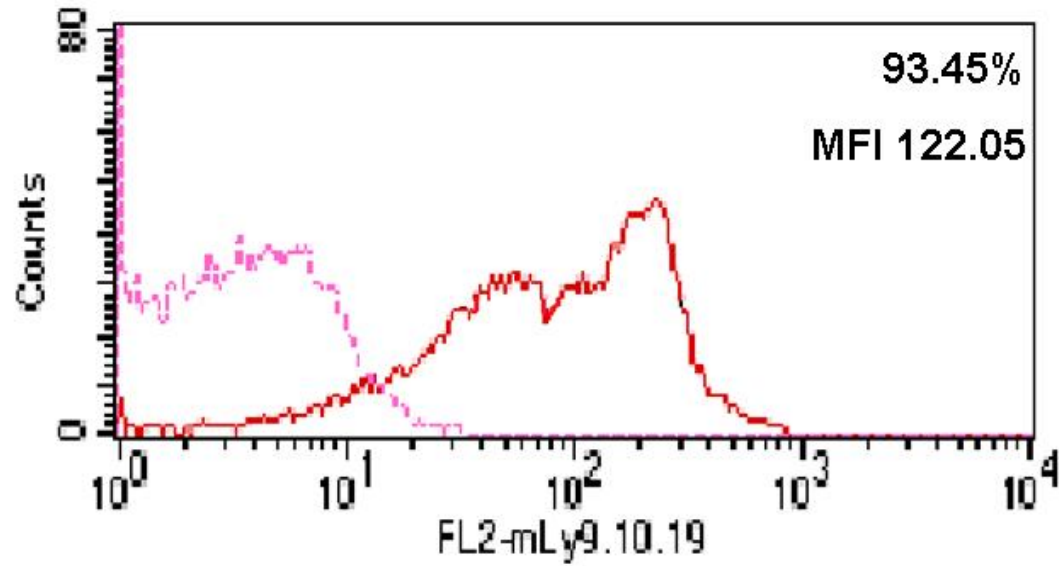
Thymocytes Balb/c WT



Thymus Ly9 Balb/c WT mouse

Flow cytometry with thymocytes of a Balb/c Ly9 WT mouse using anti-Mouse PE conjugated as secondary antibody

Thymocytes C57BL/6 WT



Thymus Ly9 C57BL/6 WT mouse

Flow cytometry with thymocytes of a C57BL/6 Ly9 WT mouse using anti-Mouse PE conjugated as secondary antibody