

P15

CONTACT INFORMATION:	Monoclonal Antibodies Unit. Centro Nacional de Investigaciones Oncológicas
STATUS:	Validated
TYPE:	rat anti mouse
CLONE NAME:	PAT56B
PROTEIN:	Mouse cyclin-dependent kinase inhibitor 2B (p15, inhibits CDK4) (Cdkn2b)
ANTIGEN USED:	HIS-GST-mp15 recombinant protein
FUSION PARTNER:	myeloma p3-NS1/Ag4-1 (NS1) cells
ISOTYPE:	IgG2a
SPECIES REACTIVITY:	mouse
PREPARATION AND STORAGE:	Aliquot and store at 4C. Do not freeze

DESCRIPTION

This gene lies adjacent to the tumor suppressor gene CDKN2A in a region that is frequently mutated and deleted in a wide variety of tumors. This gene encodes a cyclin-dependent kinase inhibitor, also known as p15Ink4b protein, which forms a complex with CDK4 or CDK6, and prevents the activation of the CDK kinases by cyclin D, thus the encoded protein functions as a cell growth regulator that inhibits cell cycle G1 progression.

REFERENCES

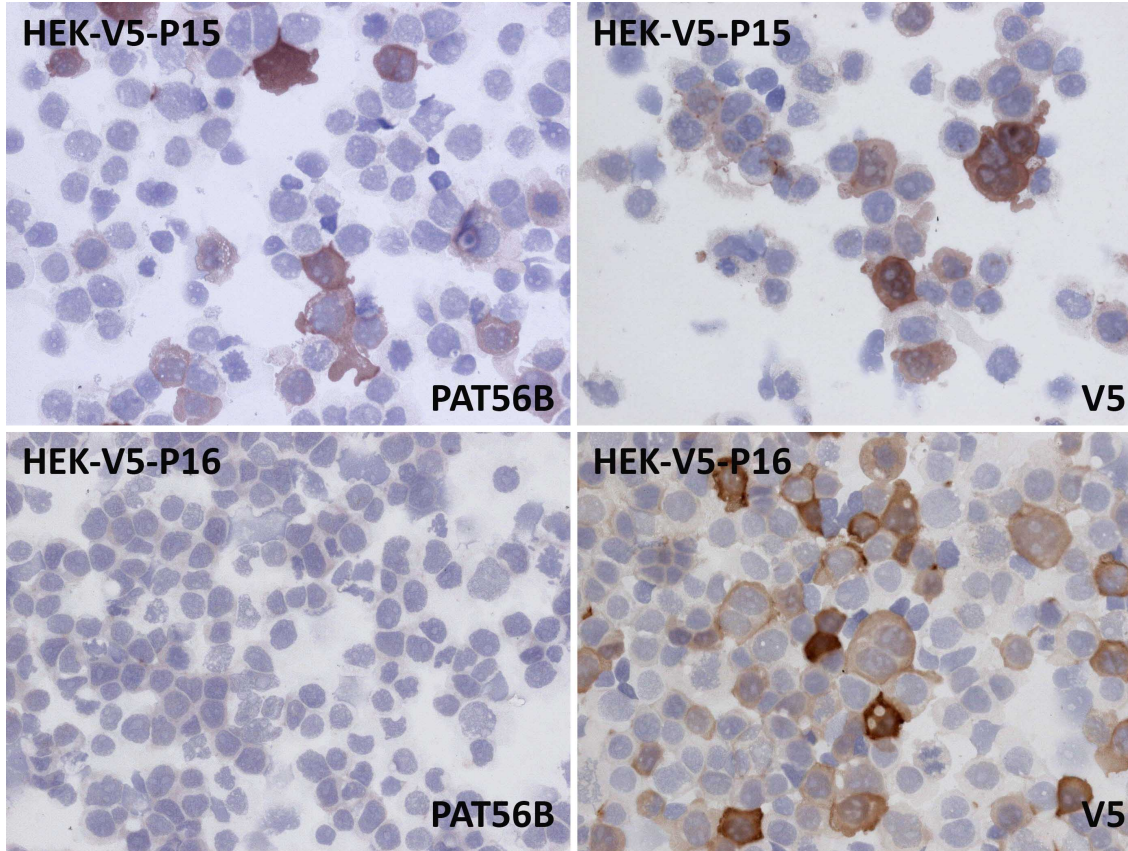
Muñoz-Espín D, Cañamero M, Maraver A, Gómez-López G, Contreras J, Murillo-Cuesta S, Rodríguez-Baeza A, Varela-Nieto I, Ruberte J, Collado M, Serrano M. Programmed cell senescence during mammalian embryonic development. *Cell*. 2013 Nov 21;155(5):1104-18.

APPLICATIONS

IHC Techniques	Clone	Dilution	Antibody concentration	Antigen retrieval method	Visualization kit	Positive control	Negative control	Protein localization	Positivity in other species
Frozen tissue and cytopins									
Paraffin tissue									

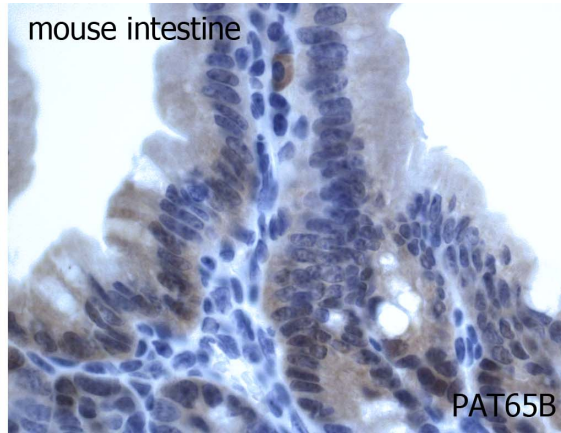
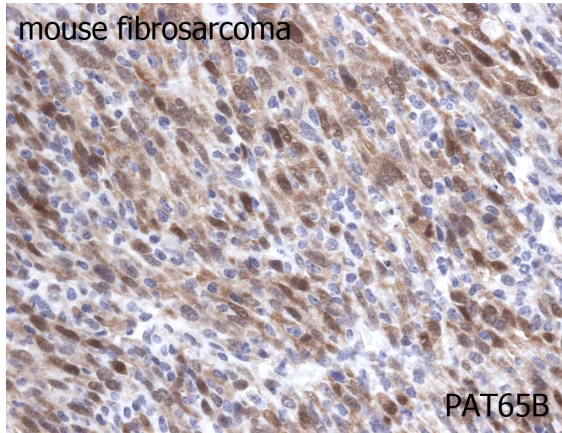
Recommended	PAT56 B	1:2	supernatant			mouse fibrosarcoma		nuclear	
-------------	------------	-----	-------------	--	--	-----------------------	--	---------	--

Immunofluorescence



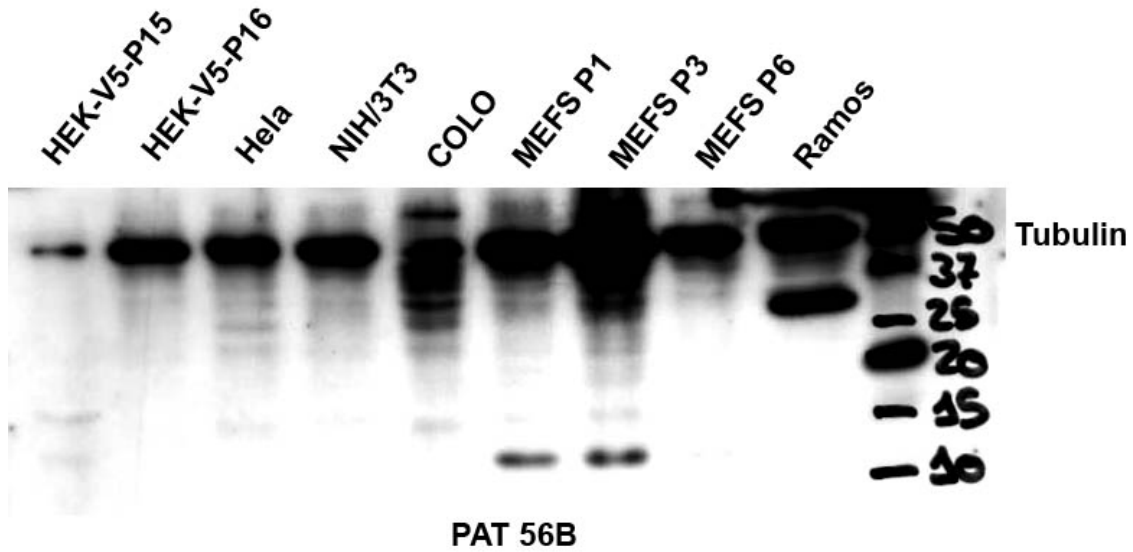
mp15 antibody (PAT56B) in transfected cells

Nuclear and cytoplasmic staining of PAT56B mAb in transfected HEK293-V5-mp15 cells. No reactivity with mp16 was found. Anti-V5 was used as a positive control.



PAT56B antibody in mouse paraffin tissues.

WB Techniques	Clone	Dilution	Antibody concentration	Positive control	Negative control	Expected MW	Observed Mw	Positivity in other species
Western Blotting								
Recommended	PAT56B	Neat supernatant	supernatant			14kDa	14kDa	
Immunoprecipitation								



Western Blott of PAT56B antibody in mouse and human extracts

- Lane 1 Hek-V5-p15 (30?g) (+)
- Lane 2 Hek-v5-p16 (30?g) (-)
- Lane 3 Hela cell line (30?g) (-)
- Lane 4 NIH/3T3 cell line (100?g) (-)
- Lane 5 COLO cell line (100?g) (-)
- Lane 6 Mefs (100?g) (+)
- Lane 7 Mefs (100?g) (+)
- Lane 8 Mefs (100?g) (-)
- Lane 9 Ramos cell line (100?g) (-)

Anti-Tubulin was used as loading control.