

## MCMV m06 (gp48)

**CONTACT INFORMATION:** Center for Proteomics. University of Rijeka  
**TYPE:** mouse monoclonal antibody  
**CLONE NAME:** CROMA229  
**PROTEIN:** CCE57335.1  
**PROTEIN WEB:** <http://www.ncbi.nlm.nih.gov/protein/CCE57335.1>  
**ANTIGEN USED:** MHC class I immunoprecipitates from MCMV infected cells  
**FUSION PARTNER:** SP2O  
**ISOTYPE:** kappa IgG1  
**SPECIES REACTIVITY:** MCMV  
**PREPARATION AND STORAGE:** -20 C long term, short term +4 C

### **PUBLICATION DESCRIBING ANTIBODY CHARACTERIZATION/VALIDATION**

---

A cytomegalovirus glycoprotein re-routes MHC class I complexes to lysosomes for degradation.  
Reusch U1, Muranyi W, Lucin P, Burgert HG, Hengel H, Koszinowski UH.  
EMBO J, 1999.

<http://www.ncbi.nlm.nih.gov/pmc/articles/PMC1171199/pdf/001081.pdf>

### **REFERENCES**

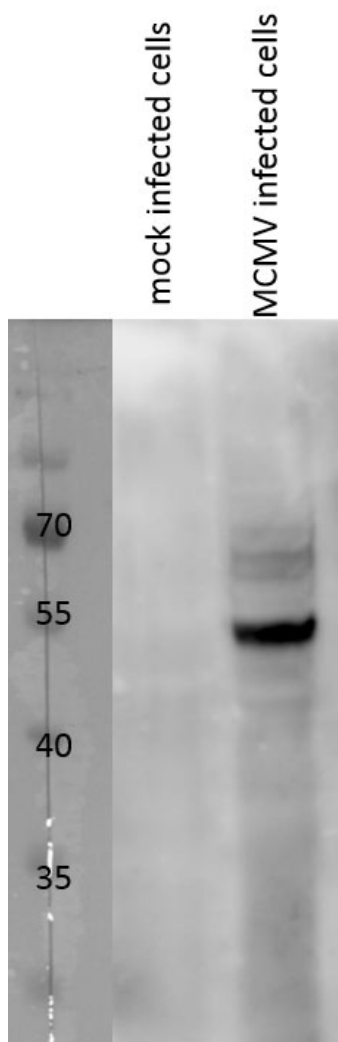
---

A cytomegalovirus glycoprotein re-routes MHC class I complexes to lysosomes for degradation.  
Reusch U1, Muranyi W, Lucin P, Burgert HG, Hengel H, Koszinowski UH.  
EMBO J, 1999.

<http://www.ncbi.nlm.nih.gov/pmc/articles/PMC1171199/pdf/001081.pdf>

## APPLICATIONS

WB Techniques	Clone	Dilution	Antibody concentration	Positive control	Negative control	Expected MW	Observed Mw	Positivity in other species
Western Blotting								
	CROMA2 29	1:500	2 ug/mL	MCMV infected cells	mock infected cells	48	48	NT
Immunoprecipitation								



**WB m06**

MCMV infected and mock infected Balb/c MEFs were lysed using RIPA buffer, separated on SDS-PAGE, transferred to PVDF membrane and immunoblotted with m06 antibody.

## Monoclonal Antibodies Catalogue

---

FLOW CYTOMETRY	Clone	Dilution	Positive control	Negative control	Type of fluorocrom
	CROMA229	1:500	MCMV infected cells	mock infected cells	secondary anti-mouse FITC