

## MCMV IE1

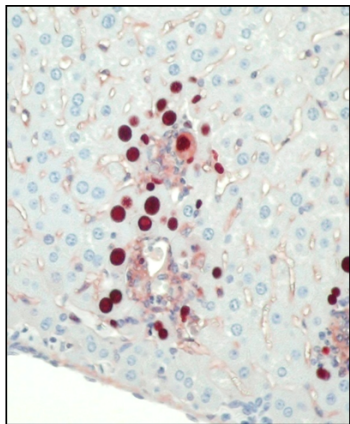
**CONTACT INFORMATION:** Center for Proteomics. University of Rijeka  
**TYPE:** monoclonal  
**CLONE NAME:** IE1.01  
**PROTEIN:** MCMV immediate early protein 1  
**PROTEIN WEB:** <http://www.ncbi.nlm.nih.gov/protein/AAA74504.1>  
**ANTIGEN USED:** lysates of MCMV infected cells  
**FUSION PARTNER:** SP2O  
**ISOTYPE:** kappa IgG2a  
**SPECIES REACTIVITY:** MCMV  
**PREPARATION AND STORAGE:** affinity purified, dilluted in PBS, -20C long term, +4 short term, no azide added

### DESCRIPTION

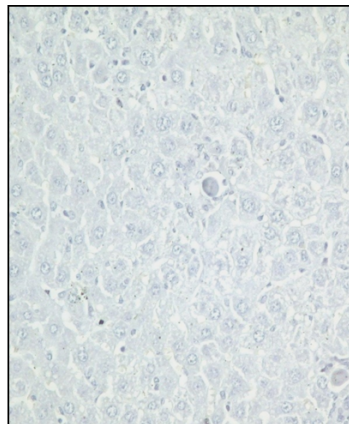
Specificity of the antibody was confirmed by mass spectrometry analysis of immunoprecipitated protein using this mAb.

### APPLICATIONS

IHC Techniques	Clone	Dilution	Antibody concentration	Antigen retrieval method	Visualization kit	Positive control	Negative control	Protein localization	Positivity in other species
Frozen tissue and cytopspins									
Paraffin tissue									
	IE1.01	1:1000				MCMV infected tissue	uninfected tissue	nuclear	
Immunofluorescence									
	IE1.01				FITC	MCMV infected cells	uninfected cells	nuclear	



CROMA 101  
( $\alpha$  pp89)

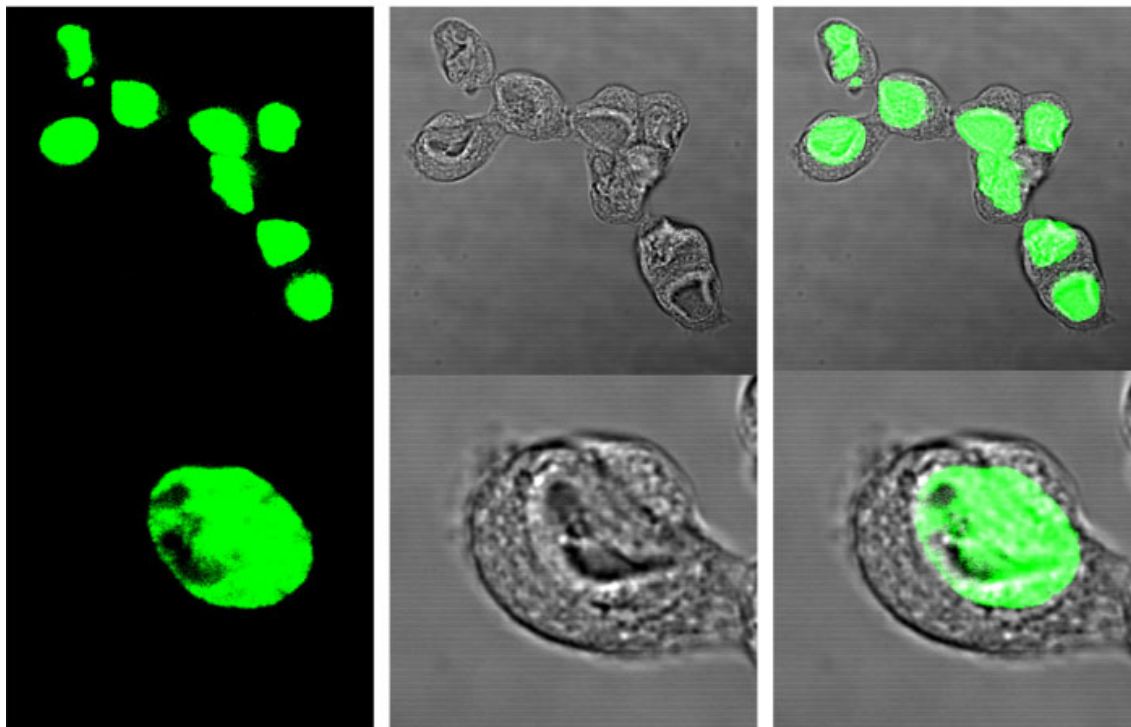


negative control

Liver of BALB/c mouse infected with MCMV ( $1 \times 10^6$  PFU)  
Formalin-fixed, paraffin-embedded tissue sections stained with monoclonal  
antibodies as indicated. (Magnification, x 20)

**IHC on paraffin embedded tissues IE1.01**

### IE1.01 (anti-m123) MW in IF



#### FLuorescence IE1.01

Murine embryonal fibroblasts (MEFs) from Balb/c mice were infected with Smith strain of MCMV.