

## CSF1R

CONTACT INFORMATION:	Monoclonal Antibodies Unit. Centro Nacional de Investigaciones Oncológicas
STATUS:	Validated
TYPE:	mouse anti human
CLONE NAME:	FER216
PROTEIN:	Macrophage colony-stimulating factor 1 receptor precursor
PROTEIN WEB:	<a href="http://www.ncbi.nlm.nih.gov/protein/NP_005202.2">http://www.ncbi.nlm.nih.gov/protein/NP_005202.2</a>
ANTIGEN USED:	ecCSF1R-Fc-6His recombinant protein
FUSION PARTNER:	NS1/Ag4-1 (NS1) cells
ISOTYPE:	IgG1
SPECIES REACTIVITY:	Human
PREPARATION AND STORAGE:	Aliquot and store at 4C. Do not freeze

### DESCRIPTION

---

The protein encoded by this gene is the receptor for colony stimulating factor 1, a cytokine which controls the production, differentiation, and function of macrophages. This receptor mediates most if not all of the biological effects of this cytokine. Ligand binding activates the receptor kinase through a process of oligomerization and transphosphorylation. The encoded protein is a tyrosine kinase transmembrane receptor and member of the CSF1/PDGF receptor family of tyrosine-protein kinases. [provided by RefSeq, Dec 2013].

### PUBLICATION DESCRIBING ANTIBODY CHARACTERIZATION/VALIDATION

---

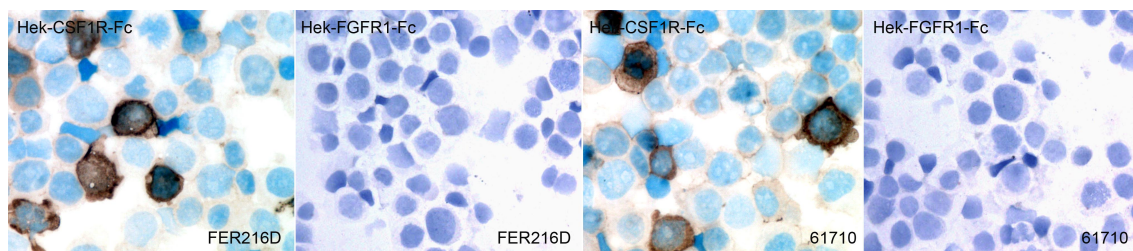
Martín-Moreno AM, Roncador G, Maestre L, Mata E, Jiménez S, Martínez-Torrecuadrada JL, Reyes-García AI, Rubio C, Tomás JF, Estévez M, Pulford K, Piris MA, García JF. CSF1R Protein Expression in Reactive Lymphoid Tissues and Lymphoma: Its Relevance in Classical Hodgkin Lymphoma. PLoS One 2015 Jun 12;10(6).

### APPLICATIONS

---

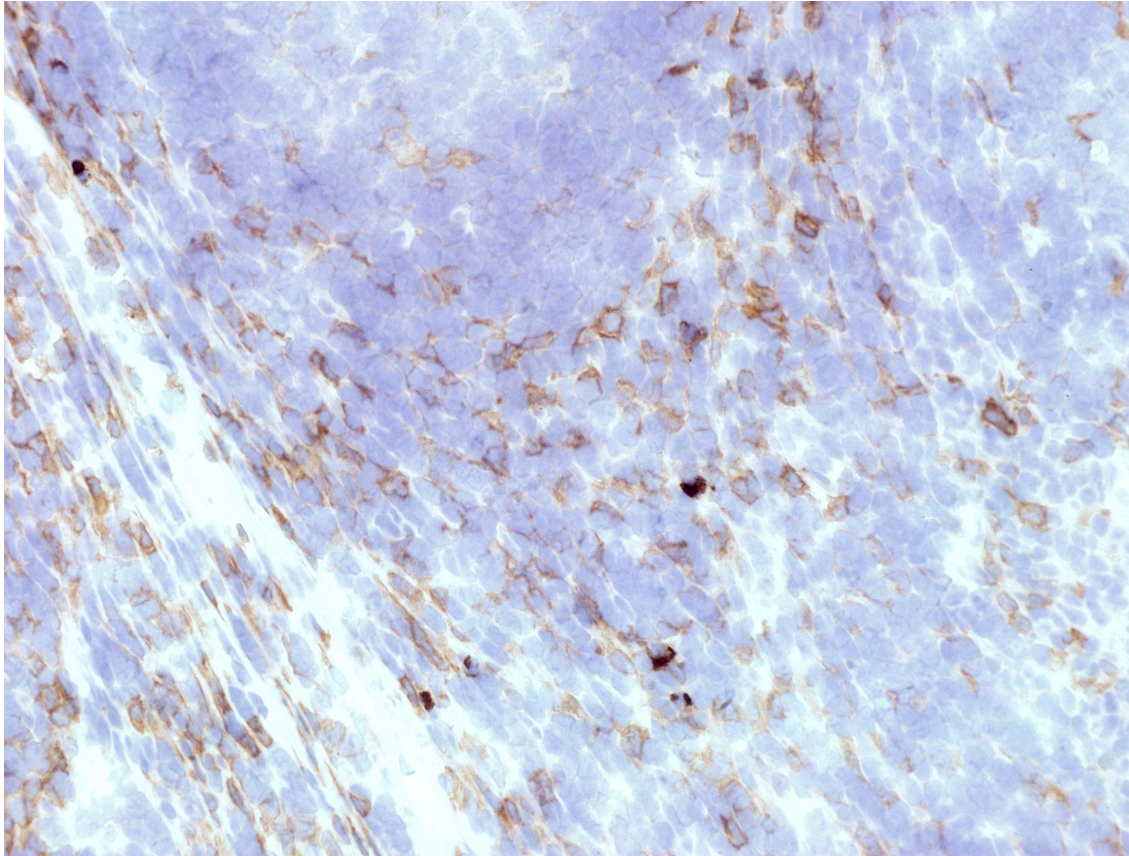
## Monoclonal Antibodies Catalogue

IHC Techniques	Clone	Dilution	Antibody concentration	Antigen retrieval method	Visualization kit	Positive control	Negative control	Protein localization	Positivity in other species
<b>Frozen tissue and cytopspins</b>									
Recommended	FER216	Neat supernatant				Tonsil			
<b>Paraffin tissue</b>									
Recommended	FER216	1:10	supernatant			Tonsil			
<b>Immunofluorescence</b>									
Recommended	FER216		supernatant			Tonsil			

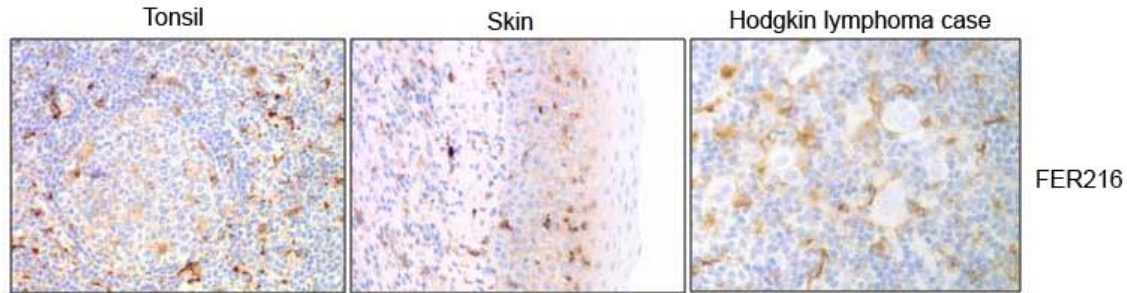


### FER216 mAb in transfected cells

Validation of FER216 monoclonal antibody in HEK293T/CSF1R transfected cells. HEK293T/FGFR1 transfected cells were used as negative control. anti-CSF1R antibody (clone 61710) confirms transfection efficiency.

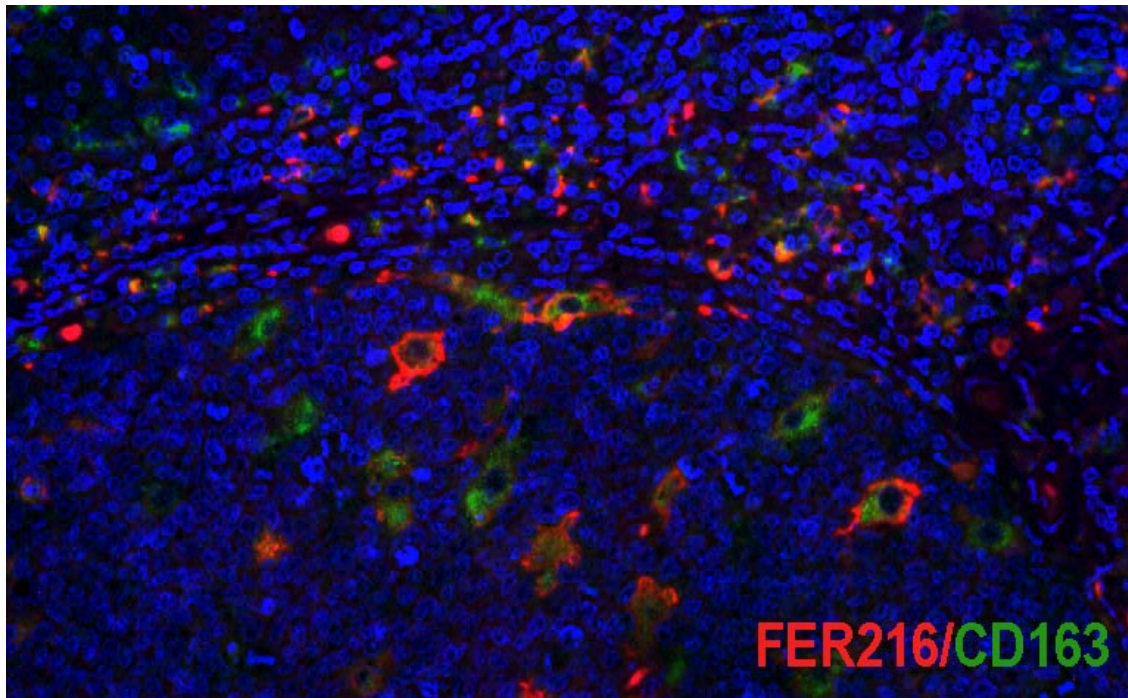


**FER216 mAb in human frozen tonsil section**



#### **FER216 staining in human paraffin embedded tissues**

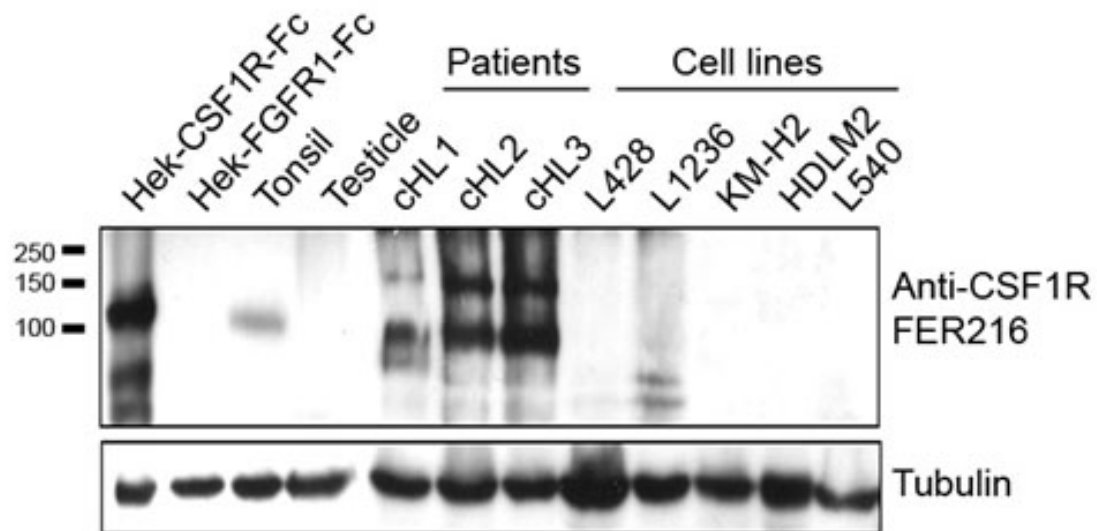
The range of expression of CSF1R in tissues varied considerably between the different functional tissue compartments. The higher frequency of CSF1R+ macrophages was detected in the paracortex of tonsil.



**Immunofluorescence of FER216 mAb in human paraffin embedded tonsil.**



WB Techniques	Clone	Dilution	Antibody concentration	Positive control	Negative control	Expected MW	Observed Mw	Positivity in other species
<b>Western Blotting</b>								
Recommended	FER216	1:2	supernatant	Tonsil	L540 cell line			
<b>Immunoprecipitation</b>								



### FER216 mAb in western blotting

Lane1 HEK-CSF1R-Fc transfected cells (20ug) (+)

Lane 2 HEK-FGFR1 transfected cells (20ug) (-)

Lane 3 Human tonsil (150ug) (+)

Lane 4 Human testicle (150ug) (-)

Lane 5 Hodgking lymphoma case (150ug) (+)

Lane 6 Hodgking lymphoma case (150ug) (+)

Lane 7 Hodgking lymphoma case (150ug) (+)

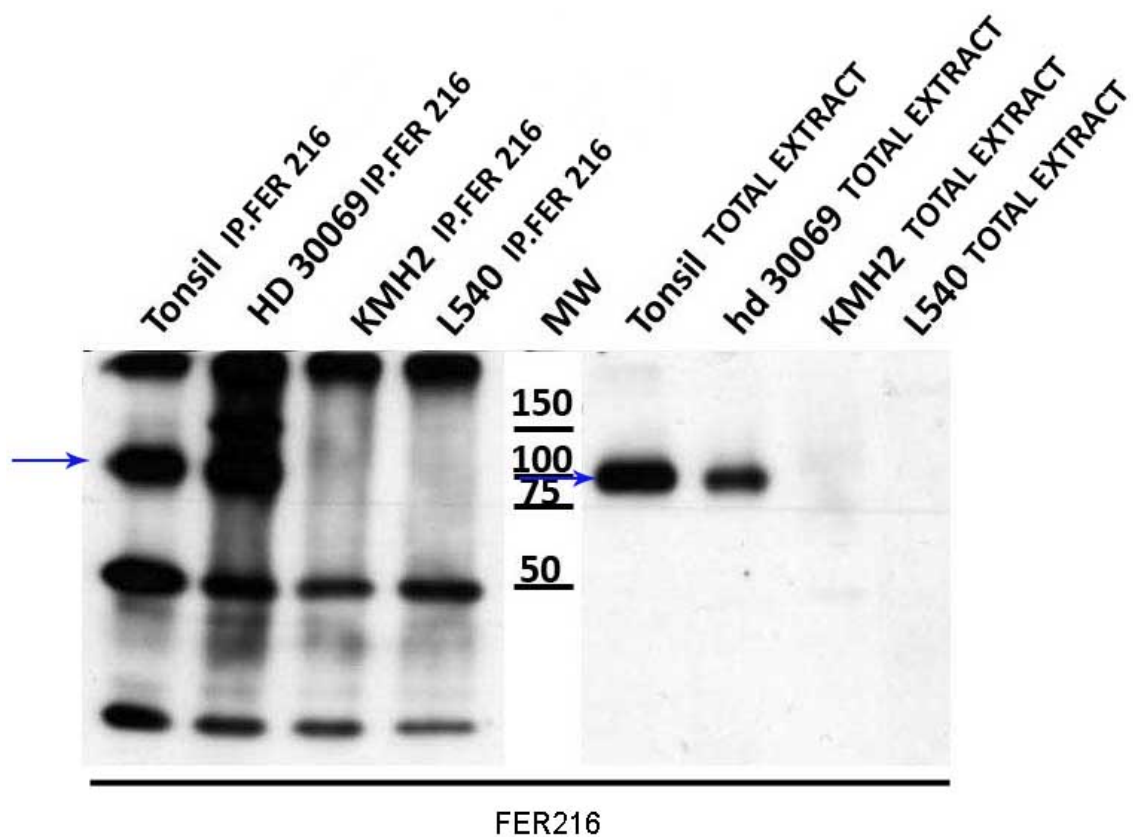
Lane 8 L428 cell line (150ug)(-)

Lane 9 L1236 cell line (150ug) (-)

Lane 10 KM-H2 cell line (150ug) (-)

Lane 11 HDLM2 cell line (150ug) (-)

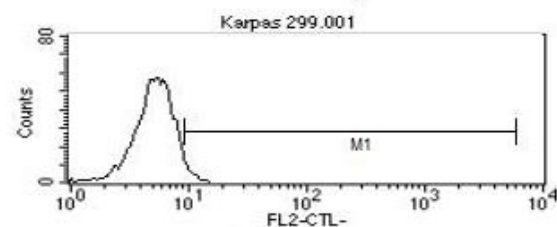
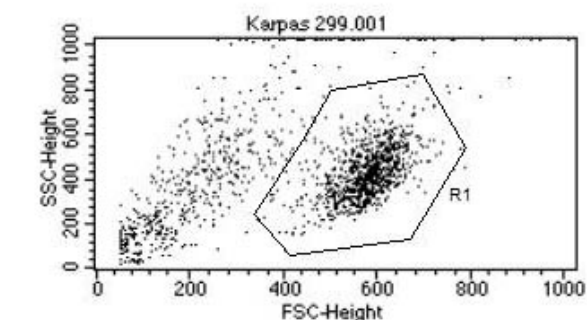
Lane 12 L540 cell line (150ug) (-)



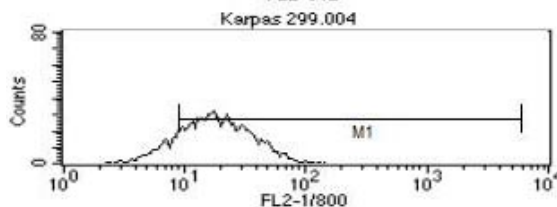
## Immunoprecipitation with FER216

Immunoprecipitation of protein extracts from human tonsil, one HD case, KMH2, and L540 with FER216 mAb (30ul/IP) followed by western blotting with FER216 (1:5 dilution).

FLOW CYTOMETRY	Clone	Dilution	Positive control	Negative control	Type of fluorocrom
Recommended	FER216				PE



Gate: G1		Gated Events: 5079			
Total Events: 7956		X Parameter: FL2-H FL2-CTL- (Log			
Marker	Left, Right	Events	% Gated	% Total	Mean
All	1, 9910	5079	100.00	63.84	5.49
M1	9, 6043	183	3.60	2.30	11.29



Gate: G1		Gated Events: 5083			
Total Events: 8536		X Parameter: FL2-H FL2-1/800 (			
Marker	Left, Right	Events	% Gated	% Total	Mean
All	1, 9910	5083	100.00	59.55	21.63
M1	9, 6043	4166	81.96	48.81	24.94

Expression of CSF1R (FER216) on Karpas 299 human cell line.