

MASTL

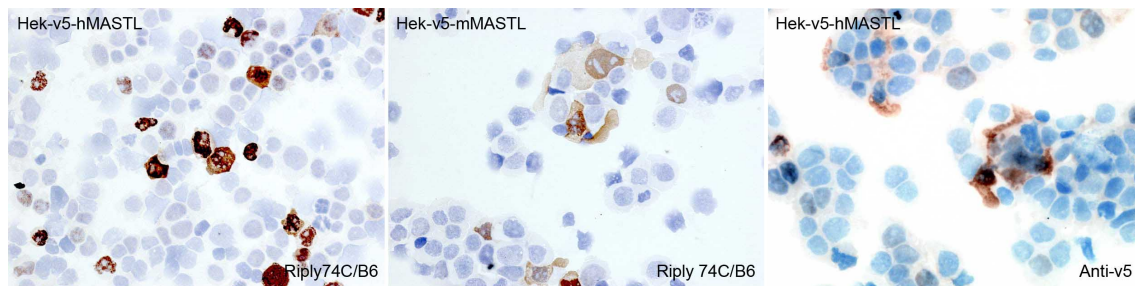
CONTACT INFORMATION: Monoclonal Antibodies Unit. Centro Nacional de Investigaciones Oncológicas
STATUS: Validated
TYPE: mouse anti mouse
CLONE NAME: RIPLY74C
PROTEIN: Microtubule associated serine/threonine kinase-like
PROTEIN WEB: <http://www.ncbi.nlm.nih.gov/protein/AAH09107.1>
ANTIGEN USED: GST-hMASTL recombinant full length protein
FUSION PARTNER: NS1/Ag4-1 (NS1) cells
ISOTYPE: IgG1
SPECIES REACTIVITY: Human and mouse
PREPARATION AND STORAGE: Aliquot and store at 4C. Do not freeze

DESCRIPTION

MASTL (microtubule associated serine/threonine kinase-like), also known as GW, THC2 or serine/threonine-protein kinase greatwall, is an 879 amino acid serine/threonine kinase regulates mitosis entry and maintenance. Depletion of MASTL delays the G2-to-M phase transition, is linked to a prolonged mitosis and sensitizes cells to mitotic death.

APPLICATIONS

IHC Techniques	Clone	Dilution	Antibody concentration	Antigen retrieval method	Visualization kit	Positive control	Negative control	Protein localization	Positivity in other species
Frozen tissue and cytopspins									
Paraffin tissue									
									mouse
Immunofluorescence									



RIPLY74C mAb in transfected cells

HEK293T/v5-hMASTL and HEK293T/V5-mMASTL cells using antibody RIPLY74C. Anti-V5 antibody was used as positive control.