

## VPREB3

**CONTACT INFORMATION:** Monoclonal Antibodies Unit. Centro Nacional de Investigaciones Oncológicas  
**STATUS:** Validated  
**TYPE:** mouse anti human  
**CLONE NAME:** 142B  
**PROTEIN:** PreB lymphocyte protein 3  
**PROTEIN WEB:** [http://www.ncbi.nlm.nih.gov/protein/NP\\_037510.1](http://www.ncbi.nlm.nih.gov/protein/NP_037510.1)  
**ANTIGEN USED:** His-VPREB3 full length recombinant protein  
**FUSION PARTNER:** NS1/Ag4-1 (NS1) cells  
**ISOTYPE:** IgG1  
**SPECIES REACTIVITY:** human  
**PREPARATION AND STORAGE:** Aliquot and store at 4C. Do not freeze

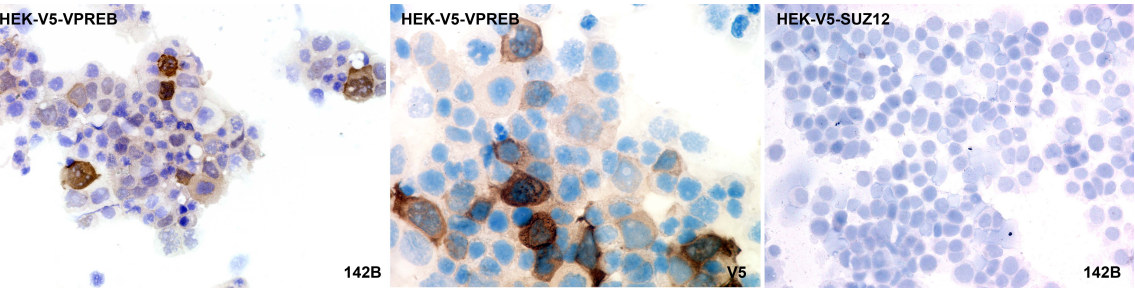
### DESCRIPTION

The protein encoded by this gene is the human homolog of the mouse VpreB3 (8HS20) protein, and is specifically expressed in cell lines representative of all stages of B-cell differentiation. It is also related to VPREB1 and other members of the immunoglobulin supergene family. This protein associates with membrane mu heavy chains early in the course of pre-B cell receptor biosynthesis. The precise function of the protein is not known, but it may contribute to mu chain transport in pre-B cells. [provided by RefSeq, Sep 2008].

### APPLICATIONS

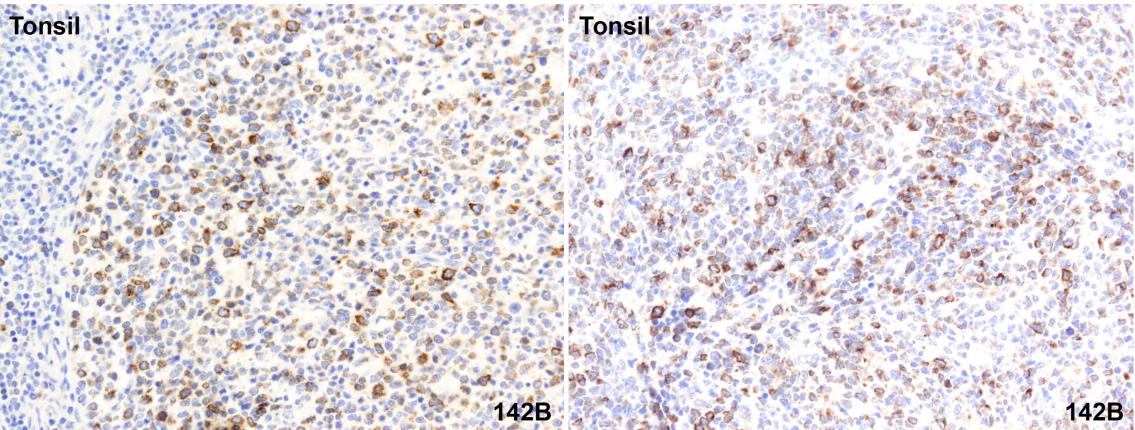
IHC Techniques	Clone	Dilution	Antibody concentration	Antigen retrieval method	Visualization kit	Positive control	Negative control	Protein localization	Positivity in other species
Frozen tissue and cytopins									
Recommended	142B	Neat supernatant							
Paraffin tissue									

Recommended	142B	1:2	Supernatant	Citrate	Bond Max Leica	Tonsil			
Immunofluorescence									



**142B mAb in cytopins preparations of HEK293T transfected cells.**

To confirm that 142B mAb recognized human VPRED3 protein, immunohistochemistry on frozen cytopins preparations of V5-tagged VPRED3 expressed in Hek293T was performed. Cytopsin preparation of SUZ12 transfected cells was used as negative control. Anti-v5 antibody was used as positive control.



**142B mAb in paraffin embedded tissue samples.**

142B antibody can be used to detect human VPRED3 protein in paraffin embedded tissue samples.

## Monoclonal Antibodies Catalogue

WB Techniques	Clone	Dilution	Antibody concentration	Positive control	Negative control	Expected MW	Observed Mw	Positivity in other species
Western Blotting								
Not recommended	142B							
Immunoprecipitation								