

## CPEB4

<b>CONTACT INFORMATION:</b>	Monoclonal Antibodies Unit. Centro Nacional de Investigaciones Oncológicas
<b>STATUS:</b>	Validated
<b>TYPE:</b>	mouse anti-human
<b>CLONE NAME:</b>	ERE93C
<b>PROTEIN:</b>	mouse CPEB4 (Cytoplasmic polyadenylation element-binding protein 4)
<b>PROTEIN WEB:</b>	<a href="http://www.uniprot.org/uniprot/Q17RY0">http://www.uniprot.org/uniprot/Q17RY0</a>
<b>ANTIGEN USED:</b>	HIS-GST-mCPEB4 (1-375aa) recombinant protein
<b>FUSION PARTNER:</b>	NS1/Ag4-1 (NS1) cells
<b>ISOTYPE:</b>	IgG1
<b>SPECIES REACTIVITY:</b>	human and mouse
<b>PREPARATION AND STORAGE:</b>	Aliquot and store at 4C. Do not freeze

### REFERENCES

Lineage-specific roles of the cytoplasmic polyadenylation factor CPEB4 in the regulation of melanoma drivers. Pérez-Guijarro E, Karras P, Cifdaloz M, Martínez-Herranz R, Cañón E, Graña O, Horcajada-Reales C, Alonso-Curbelo D, Calvo TG, Gómez-López G, Bellora N, Riveiro-Falkenbach E, Ortiz-Romero PL, Rodríguez-Peralto JL, Maestre L, Roncador G, de Agustín Asensio JC, Goding CR, Eyraas E, Megías D, Méndez R, Soengas MS.

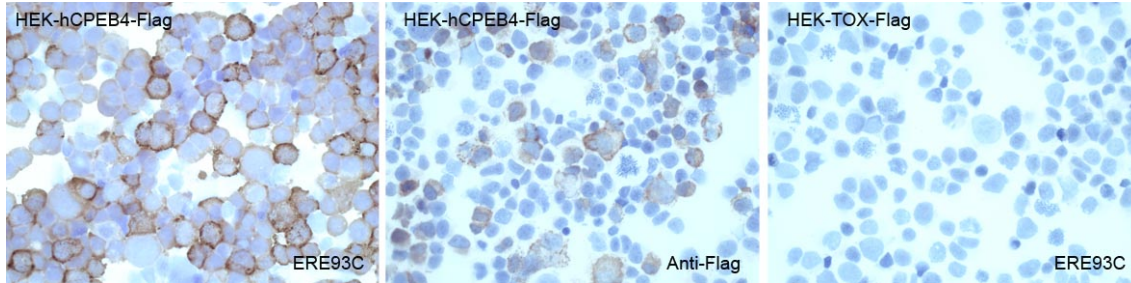
Nat Commun. 2016 Nov 18; 7:13418.

### APPLICATIONS

IHC Techniques	Clone	Dilution	Antibody concentration	Antigen retrieval method	Visualization kit	Positive control	Negative control	Protein localization	Positivity in other species
<b>Frozen tissue and cytopins</b>									
Recommended	ERE9 3C	neat	supernatant						
<b>Paraffin tissue</b>									

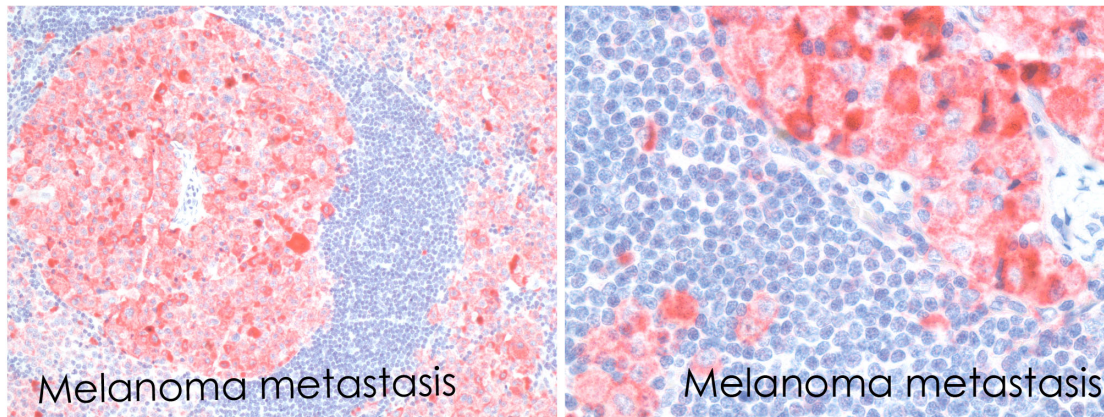
Recommended	ERE9 3C	1:1500	purified						
-------------	------------	--------	----------	--	--	--	--	--	--

**Immunofluorescence**



**ERE93CmAb in HEK293T transfected cells.**

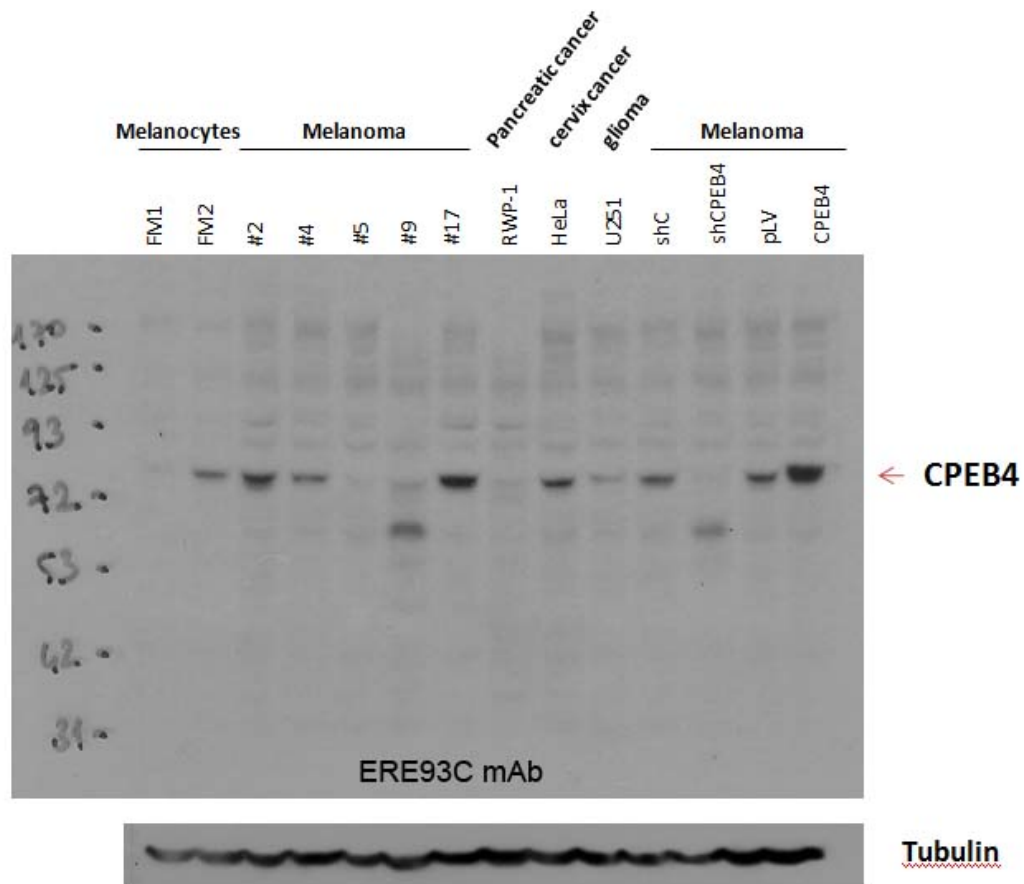
Anti-Flag was used as positive control. HEK-TOX-Flag transfected cells were used as negative control.



**ERE93C staining in human paraffin sections.**

## Monoclonal Antibodies Catalogue

WB Techniques	Clone	Dilution	Antibody concentration	Positive control	Negative control	Expected MW	Observed Mw	Positivity in other species
<b>Western Blotting</b>								
Recommended	ERE93C			melanoma tissue				
<b>Immunoprecipitation</b>								



**Western Blotting of CPEB4 (ERE93C) using different human cell lines.**

Predicted molecular weight: 80kDa

Observed molecular weight: 80kDa

Lanes

- Lane 1 Foreskin melanocytes (prep 1)
- Lane 2 Foreskin melanocytes (prep 2)
- Lane 3 Melanoma cell line SK-Mel-5
- Lane 4 Melanoma cell line SK-Mel-28
- Lane 5 Melanoma cell line SK-Mel-29
- Lane 6 Melanoma cell line SK-Mel-103
- Lane 7 Melanoma cell line UACC-62
- Lane 8 RWP-1 cell line (pancreatic cancer)
- Lane 9 HeLa cell line (cervical cancer)
- Lane 10 U251 cell line (glioma)
- Lane 11 Melanoma cell line SK-Mel-28 transduced with pLK.O1\_shControl
- Lane 12 Melanoma cell line SK-Mel-28 transduced with pLK.O1\_shCPEB4
- Lane 13 Melanoma cell line SK-Mel-28 transduced with pLV empty vector
- Lane 14 Melanoma cell line SK-Mel-28 transduced with pLV-CPEB4

Image provided by Eva Pérez.