

## CPEB4

<b>CONTACT INFORMATION:</b>	Monoclonal Antibodies Unit. Centro Nacional de Investigaciones Oncológicas
<b>STATUS:</b>	Validated
<b>TYPE:</b>	mouse anti-mouse
<b>CLONE NAME:</b>	ERE93C
<b>PROTEIN:</b>	CPEB4 (Cytoplasmic polyadenylation element-binding protein 4)
<b>PROTEIN WEB:</b>	<a href="http://www.uniprot.org/uniprot/Q7TN98">http://www.uniprot.org/uniprot/Q7TN98</a>
<b>ANTIGEN USED:</b>	HIS-GST-mCPEB4 (1-375aa) recombinant protein
<b>FUSION PARTNER:</b>	NS1/Ag4-1 (NS1) cells
<b>ISOTYPE:</b>	IgG1
<b>SPECIES REACTIVITY:</b>	human and mouse
<b>PREPARATION AND STORAGE:</b>	Aliquot and store at 4C. Do not freeze

### **PUBLICATION DESCRIBING ANTIBODY CHARACTERIZATION/VALIDATION**

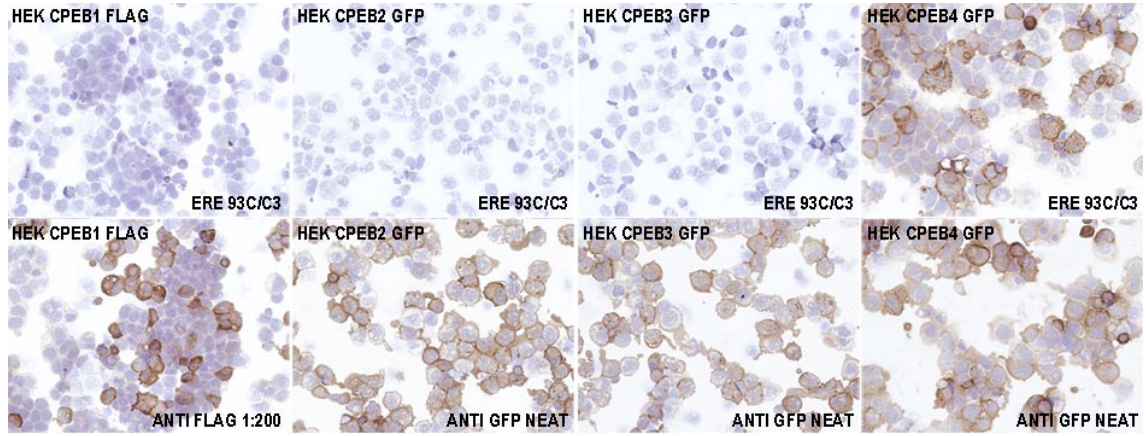
Lineage-specific roles of the cytoplasmic polyadenylation factor CPEB4 in the regulation of melanoma drivers. Pérez-Guijarro E, Karras P, Cifdaloz M, Martínez-Herranz R, Cañón E, Graña O, Horcajada-Reales C, Alonso-Curbelo D, Calvo TG, Gómez-López G, Bellora N, Riveiro-Falkenbach E, Ortiz-Romero PL, Rodríguez-Peralto JL, Maestre L, Roncador G, de Agustín Asensio JC, Goding CR, Eyraas E, Megías D, Méndez R, Soengas MS.

Nat Commun. 2016 Nov 18; 7:13418.

### **APPLICATIONS**

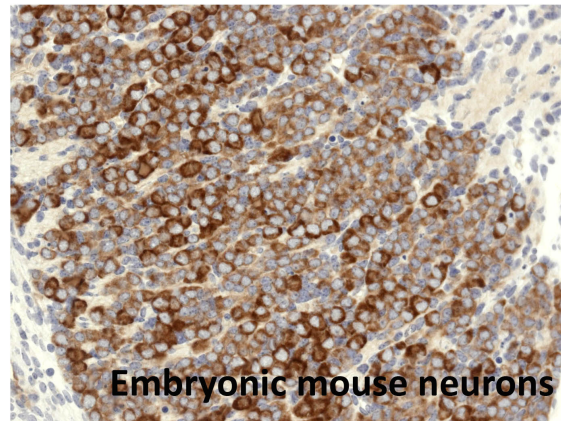
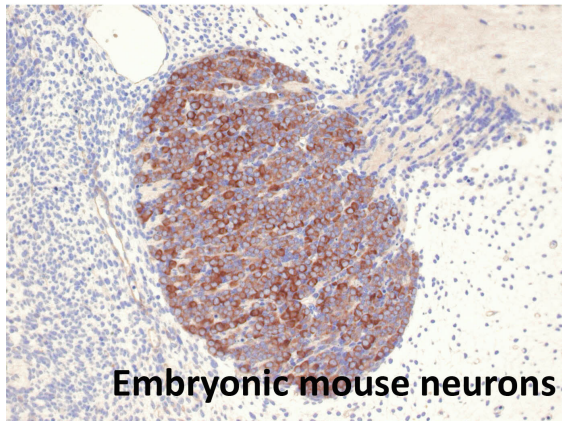
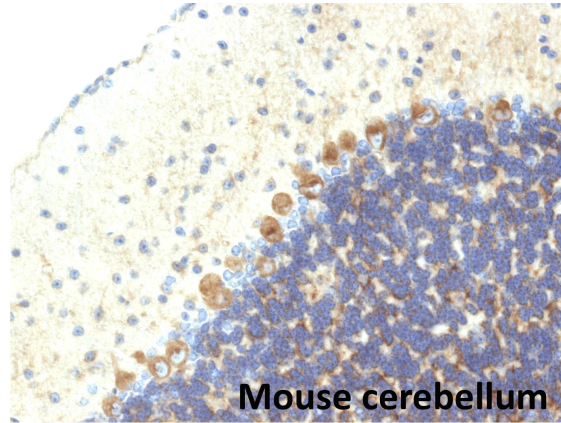
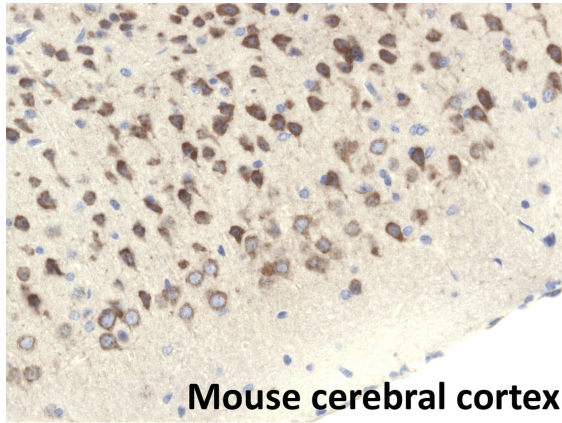
IHC Techniques	Clone	Dilution	Antibody concentration	Antigen retrieval method	Visualization kit	Positive control	Negative control	Protein localization	Positivity in other species
<b>Frozen tissue and cytopins</b>									
Recommended	Neat	Supernatant							
<b>Paraffin tissue</b>									

Recommended	1:1500	Purified							
<b>Immunofluorescence</b>									
Recommended	Neat	Supernatant							



**ERE93C mAb in transfected cells**

To confirm that ERE93C recognizes mCPEB4 immunohistochemistry on frozen cytopins preparations of GFP or Flag-tagged mCPEB1, mCPEB2, mCPEB3 and mCPEB4 expressed in Hek293T was performed. Anti-Flag and anti-GFP antibodies were used as positive controls.



**ERE93C staining in mouse paraffin sections.**

ERE93C antibody can be used to detect mCPEB4 protein in mouse paraffin embedded tissue samples.

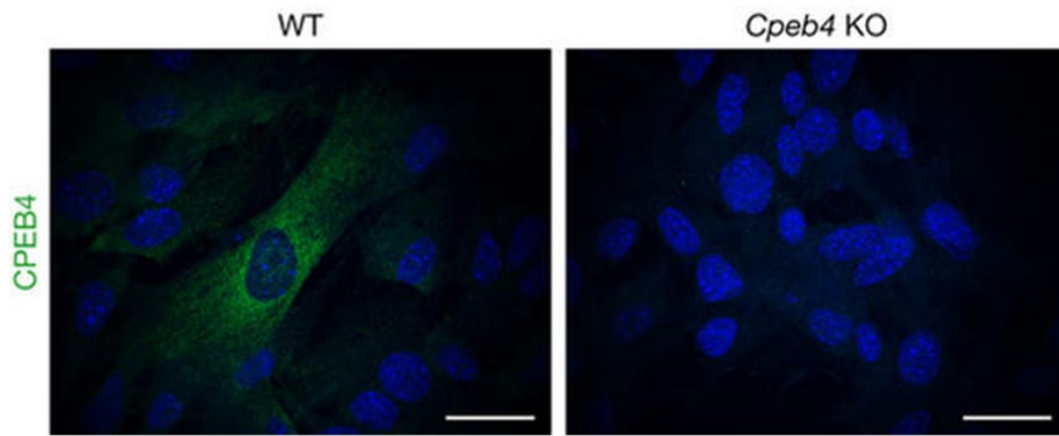
Tissue sample: mouse brain and mouse embryonic tissues.

Dilution: 1:1500

Antigen retrieval: CC1 D5+OR

Antibody incubation: 30 minutes

Detection kit used: Ventana



**ERE93C antibody can be used to detect mCPEB4 protein by Immunofluorescence.**

Tissue sample: Mefs.