

CONTACT INFORMATION:	University of Oxford marketed by Ximbio.com
TYPE:	mouse anti human
CLONE NAME:	C8/144B
PROTEIN:	Leu2 (CD8)
PROTEIN WEB:	<a href="https://www.omim.org/entry/186910">https://www.omim.org/entry/186910</a>
ANTIGEN USED:	Synthetic peptide (the 13 C-terminal residues of the cytoplasmic domain of human CD8a)
FUSION PARTNER:	P3/NS1/1-Ag4.1
ISOTYPE:	IgG1
SPECIES REACTIVITY:	Human
PREPARATION AND STORAGE:	Aliquot and store at 4C. Do not freeze
COMMERCIALIZED BY:	Ximbio.com
APP RECOMMENDED:	IHC IF IP WB

## DESCRIPTION

---

CD8 is a T cell co-receptor that recognises, together with the T cell receptor, MHC class I molecules. CD8 is present on human suppressor/cytotoxic T cells which make up 30% of circulating T cells. C8/144B can be used to detect these cells in tissue sections and also their neoplastic counterparts.

## PUBLICATION DESCRIBING ANTIBODY CHARACTERIZATION/VALIDATION

---

J Clin Pathol. 1992 Dec;45(12):1084-8.

Immunohistological detection of human cytotoxic/suppressor T cells using antibodies to a CD8 peptide sequence.

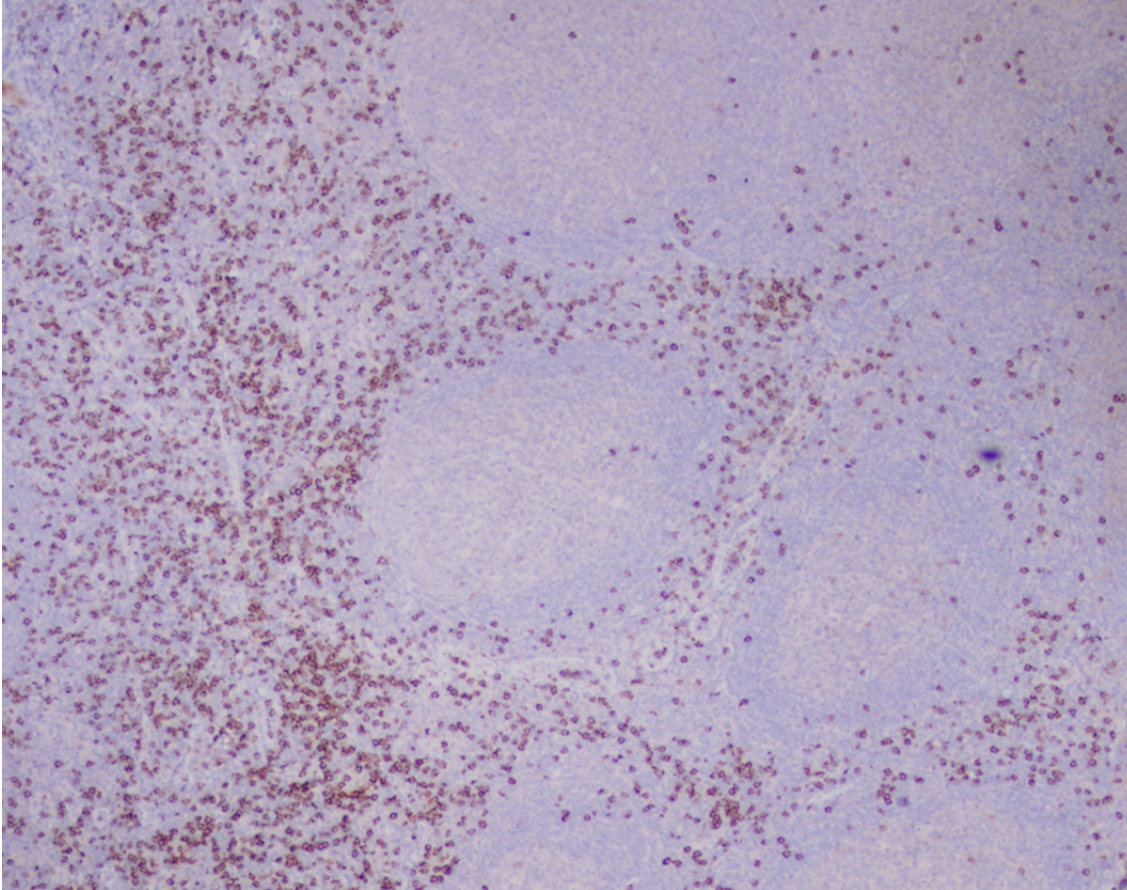
Mason DY1, Cordell JL, Gaulard P, Tse AG, Brown MH.

PMID: 1479035

<https://www.ncbi.nlm.nih.gov/pubmed/1479035>

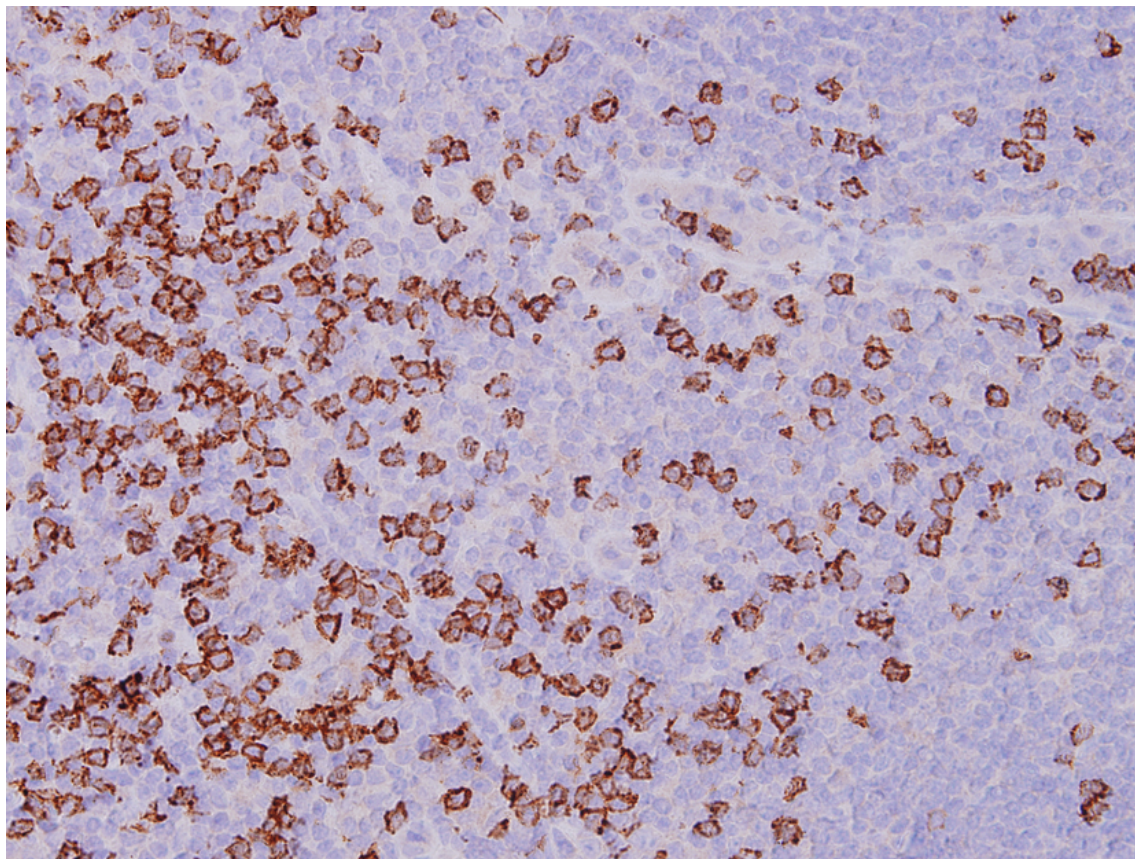
## APPLICATIONS

IHC Techniques	Clone	Dilution	Antibody concentration	Antigen retrieval method	Visualization kit	Positive control	Negative control	Protein localization	Positivity in other species
Frozen tissue and cytopins									
Paraffin tissue									
	C8/14 4B	neat	supernatant	Tris EDTA	Dako Envision	Tonsil			
Immunofluorescence									



**C8/144B Tonsil**

Tonsil stained with neat supernatant from bcl-2/100 hybridoma, detection using Dako Envision kit, 4x power image



**C8/144B Tonsil**

Tonsil stained with neat supernatant from bcl-2/100 hybridoma, detection using Dako Envision kit, 20x power image