

Haemoglobin Scavenger Receptor

CONTACT INFORMATION:	University of Oxford marketed by Ximbio.com
TYPE:	mouse anti human
CLONE NAME:	GHI/61
PROTEIN:	Haemoglobin Scavenger Receptor (M130; CD163)
PROTEIN WEB:	https://www.omim.org/entry/605545
ANTIGEN USED:	Hairy cell leukaemia cells
FUSION PARTNER:	P3/NS1/1-Ag4.1
ISOTYPE:	IgG1 kappa
SPECIES REACTIVITY:	Human
PREPARATION AND STORAGE:	Aliquot and store at 4C. Do not freeze
COMMERCIALIZED BY:	Ximbio.com
APP RECOMMENDED:	FACS IHC IF IP Fn WB

DESCRIPTION

The Haemoglobin Scavenger Receptor is a membrane glycoprotein of 130 kDa. It is expressed exclusively on the cell surface of human monocytes and macrophages that evolve predominantly in the late phase of inflammation. This receptor is a member of the scavenger receptor cysteine-rich superfamily, it is a receptor for the haemoglobin-haptoglobin complex

PUBLICATION DESCRIBING ANTIBODY CHARACTERIZATION/VALIDATION

Immunology. 1992 Apr;75(4):588-95.

A monocyte/macrophage antigen recognized by the four antibodies GHI/61, Ber-MAC3, Ki-M8 and SM4.

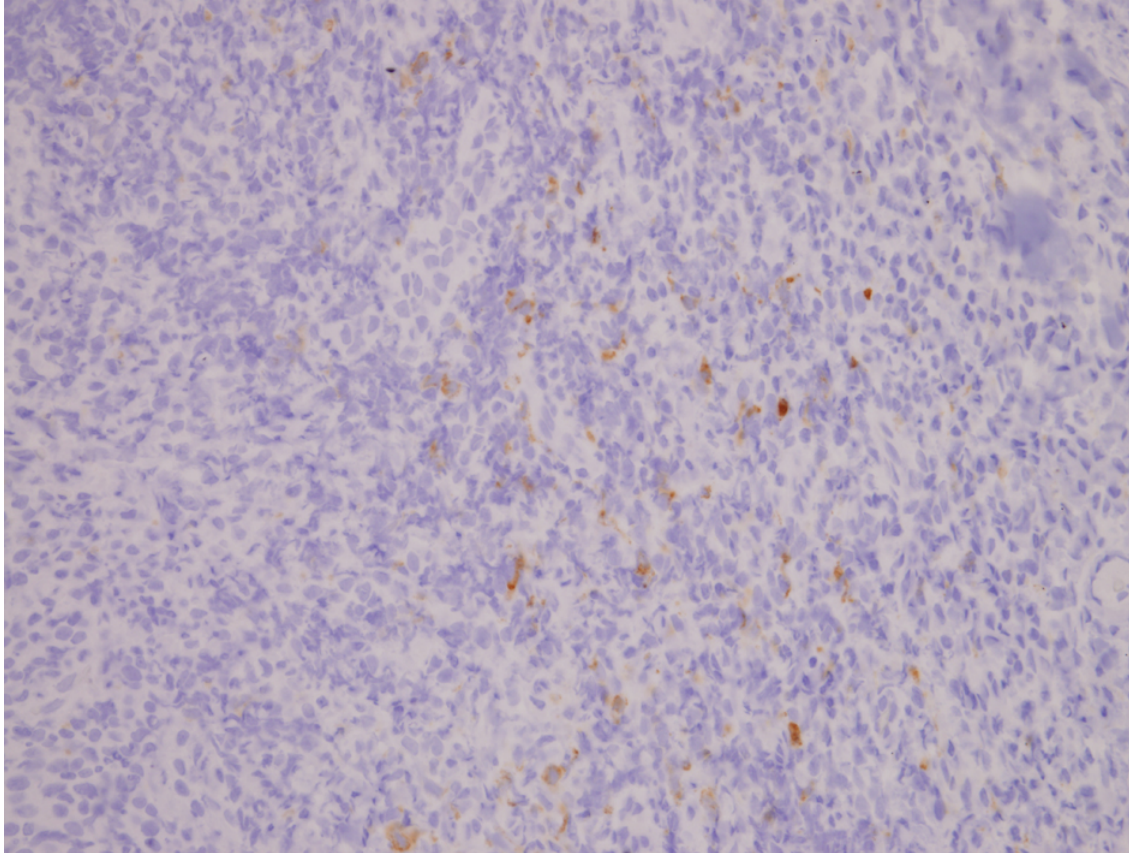
Pulford K1, Micklem K, McCarthy S, Cordell J, Jones M, Mason DY.

PMID: 1592433

<https://www.ncbi.nlm.nih.gov/pubmed/1592433>

APPLICATIONS

IHC Techniques	Clone	Dilution	Antibody concentration	Antigen retrieval method	Visualization kit	Positive control	Negative control	Protein localization	Positivity in other species
Frozen tissue and cytopins									
Paraffin tissue									
	GHI/6 1	neat	supernatant	Citrate	Dako Envision	Tonsil			
Immunofluorescence									



GHI/61 Tonsil

Tonsil stained with neat supernatant from GHI/61 hybridoma, detection using Dako Envision kit, 20x power image