

Proliferation marker

| | |
|--------------------------|---|
| CONTACT INFORMATION: | University of Oxford marketed by Ximbio.com |
| TYPE: | mouse anti human |
| CLONE NAME: | JC1 |
| PROTEIN: | Proliferation marker |
| ANTIGEN USED: | Pokeweed-stimulated lymphocyte |
| FUSION PARTNER: | P3/NS1/1-Ag4.1 |
| ISOTYPE: | IgG2a |
| SPECIES REACTIVITY: | Human |
| PREPARATION AND STORAGE: | Aliquot and store at 4C. Do not freeze |
| COMMERCIALIZED BY: | Ximbio.com |
| APP RECOMMENDED: | IHC IF WB |

DESCRIPTION

JC1 detects a nuclear antigen, distinct from Ki67, present in proliferating cells. It is useful as a marker of proliferation in cases such as squamous cell carcinoma where the Ki67 index cannot be determined.

PUBLICATION DESCRIBING ANTIBODY CHARACTERIZATION/VALIDATION

J Clin Pathol. 1992 Oct;45(10):860-5.

Monoclonal antibody JC1: new reagent for studying cell proliferation.

Garrido MC1, Cordell JL, Becker MH, Key G, Gerdes J, Jones M, Gatter KC, Mason DY.

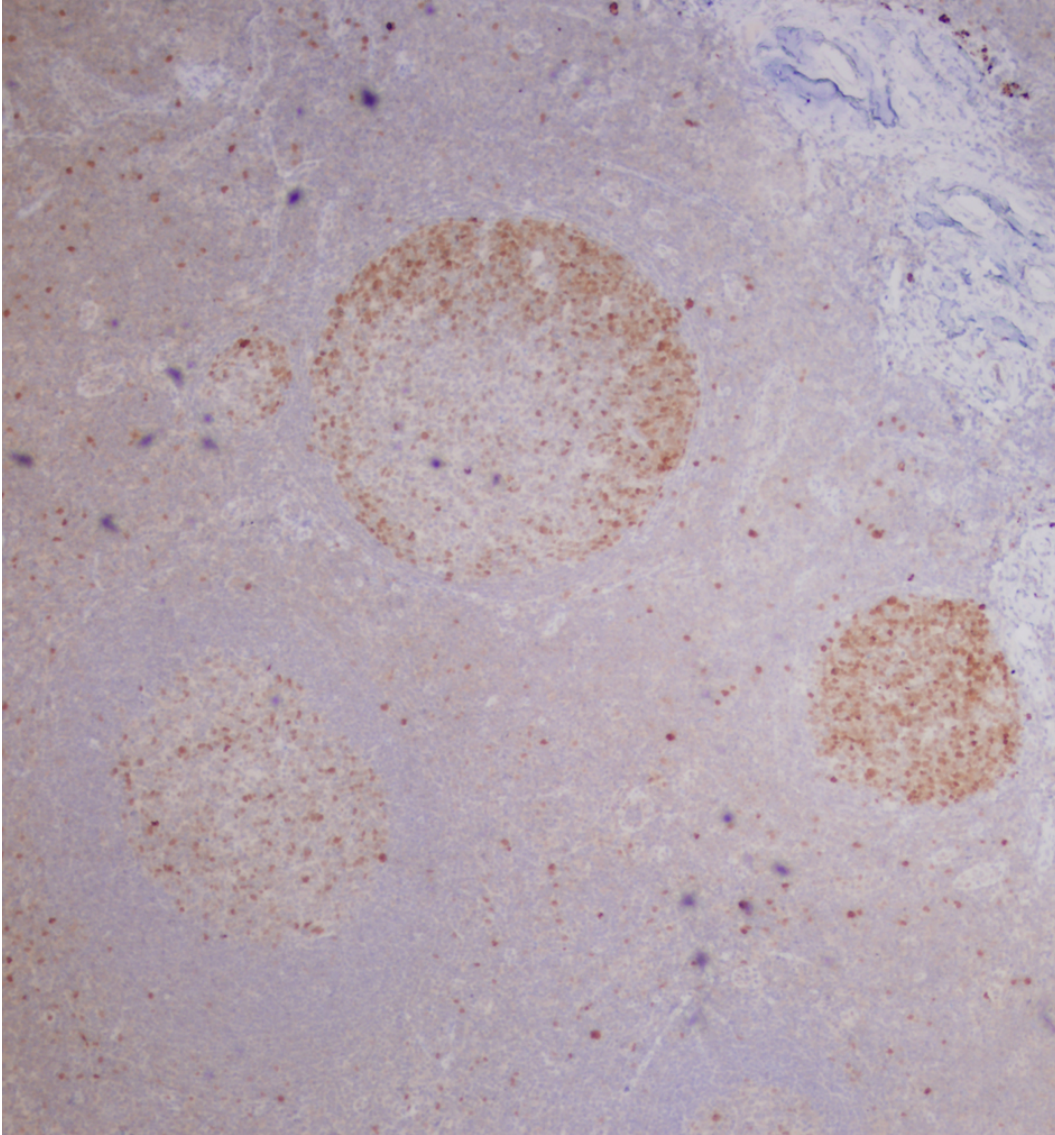
PMID: 1430255

<https://www.ncbi.nlm.nih.gov/pubmed/1430255>

APPLICATIONS

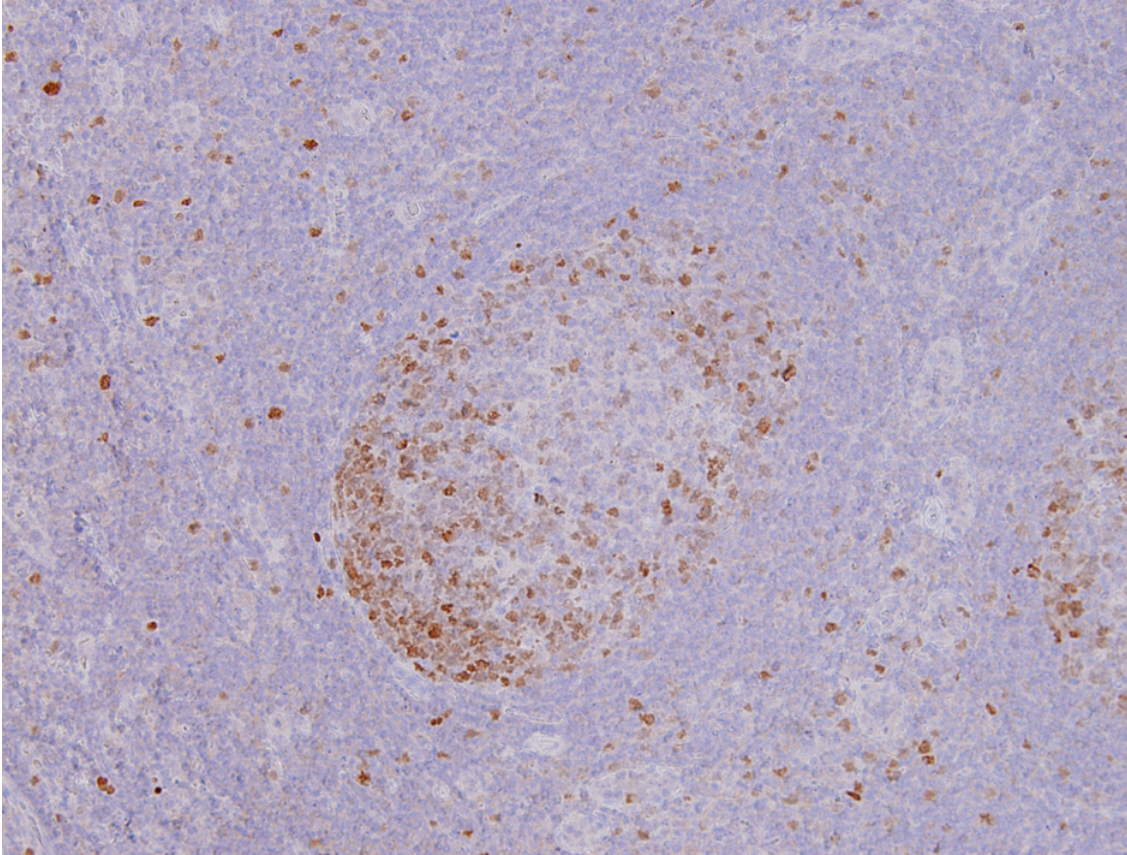
Monoclonal Antibodies Catalogue

| IHC Techniques | Clone | Dilution | Antibody concentration | Antigen retrieval method | Visualization kit | Positive control | Negative control | Protein localization | Positivity in other species |
|----------------------------|-------|----------|------------------------|--------------------------|-------------------|------------------|------------------|----------------------|-----------------------------|
| Frozen tissue and cytopins | | | | | | | | | |
| Paraffin tissue | | | | | | | | | |
| | JC1 | neat | supernatant | Tris EDTA | Dako Envision | Tonsil | | | |
| Immunofluorescence | | | | | | | | | |



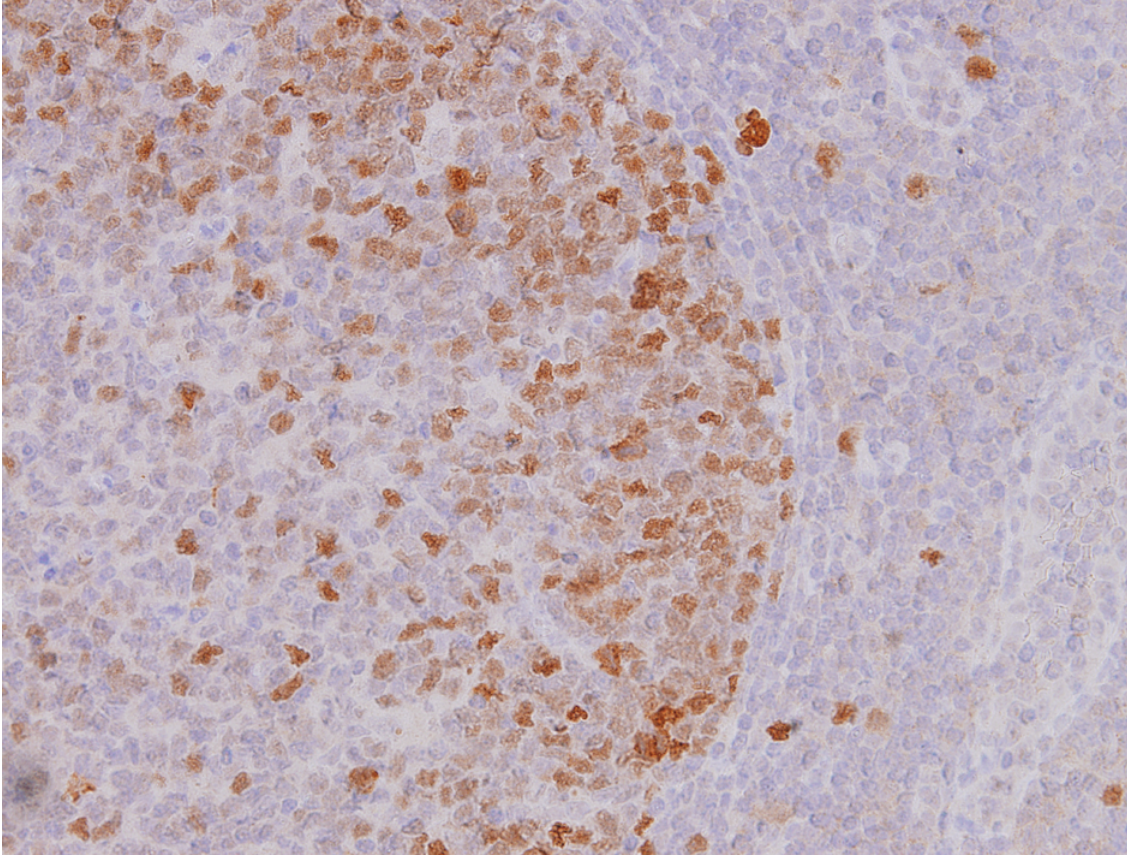
JC1 Tonsil

Tonsil stained with neat supernatant from JC1 hybridoma, detection using Dako Envision kit, 4x power image



JC1 Tonsil

Tonsil stained with neat supernatant from JC1 hybridoma, detection using Dako Envision kit, 10x power image



JC1 Tonsil

Tonsil stained with neat supernatant from JC1 hybridoma, detection using Dako Envision kit, 20x power image