

Integrin aX

CONTACT INFORMATION:	University of Oxford marketed by Ximbio.com
TYPE:	mouse anti human
CLONE NAME:	KB90
PROTEIN:	Integrin aX
PROTEIN WEB:	https://www.omim.org/entry/151510
ANTIGEN USED:	Hairy cell leukaemia cells
FUSION PARTNER:	P3/NS1/1-Ag4.1
ISOTYPE:	IgG1 kappa
SPECIES REACTIVITY:	Human
PREPARATION AND STORAGE:	Aliquot and store at 4C. Do not freeze
COMMERCIALIZED BY:	Ximbio.com
APP RECOMMENDED:	FACS IHC WB

DESCRIPTION

Integrin aX is found on hairy cell leukaemias and malignant histiocytes and on tissue macrophages, monocytes, activated neutrophils and some T-cell clones. Integrin aX has utility for diagnosis of hairy cell leukaemia

PUBLICATION DESCRIBING ANTIBODY CHARACTERIZATION/VALIDATION

Immunology. 1986 Nov;59(3):427-31.

A monoclonal antibody recognizing the p150/95 leucocyte differentiation antigen.

MacDonald SM, Pulford K, Falini B, Micklem K, Mason DY.

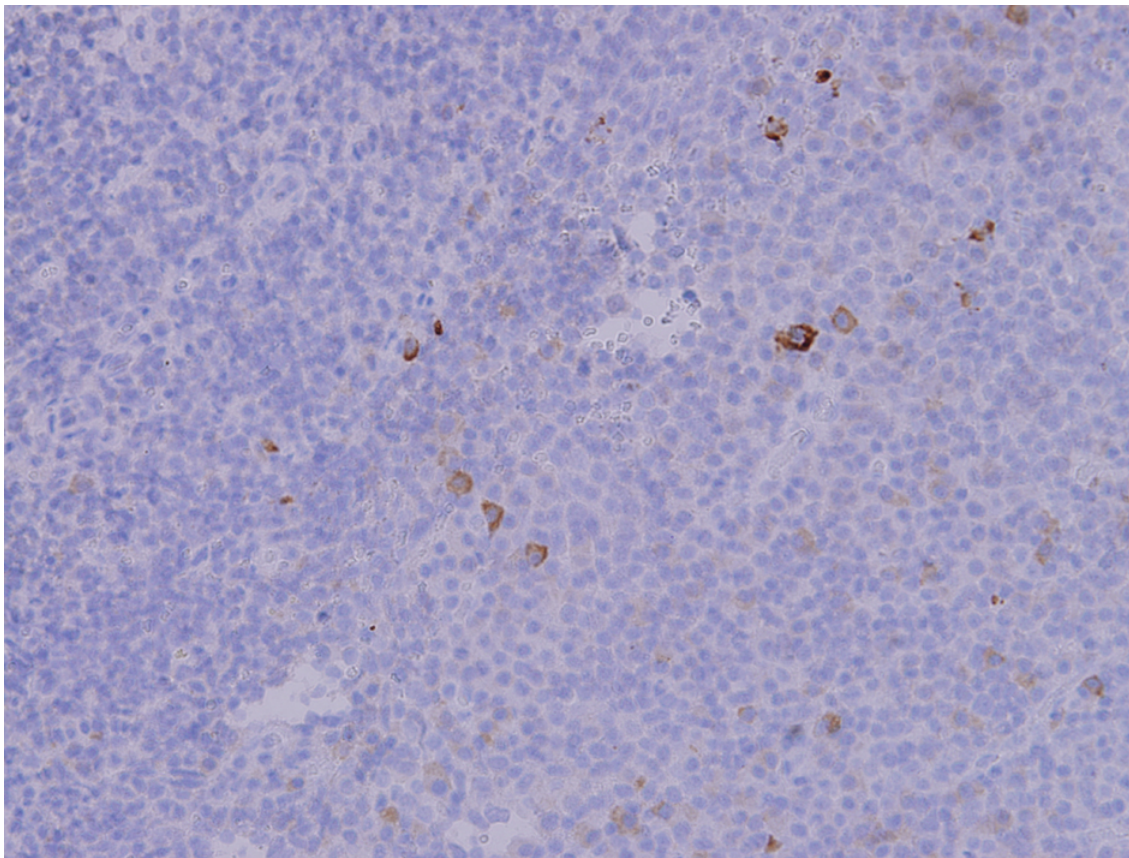
PMID: 2431998

<https://www.ncbi.nlm.nih.gov/pubmed/2431998>

APPLICATIONS

Monoclonal Antibodies Catalogue

IHC Techniques	Clone	Dilution	Antibody concentration	Antigen retrieval method	Visualization kit	Positive control	Negative control	Protein localization	Positivity in other species
Frozen tissue and cytopspins									
Paraffin tissue									
	KB90	neat	supernatant	Citrate	Dako Envision	Tonsil			
Immunofluorescence									



KB90 Tonsil

Tonsil stained with neat supernatant from KB90 hybridoma, detection using Dako Envision kit, 20x power image