

## Nucleophosmin

CONTACT INFORMATION:	University of Oxford marketed by Ximbio.com
TYPE:	mouse anti human
CLONE NAME:	NA24
PROTEIN:	Nucleophosmin
PROTEIN WEB:	<a href="https://www.omim.org/entry/164040">https://www.omim.org/entry/164040</a>
ANTIGEN USED:	Nucleophosmin recombinant protein
FUSION PARTNER:	P3/NS1/1-Ag4.1
ISOTYPE:	IgG1
SPECIES REACTIVITY:	Human
PREPARATION AND STORAGE:	Aliquot and store at 4C. Do not freeze
COMMERCIALIZED BY:	Ximbio.com
APP RECOMMENDED:	ChIP IHC IF IP WB

### DESCRIPTION

---

Nucleophosmin (NPM) also called B23, nutramin and NO38 is a ubiquitously expressed phosphoprotein involved in ribosome assembly/transport, cytoplasmic/nuclear trafficking, regulation of DNA polymerase alpha activity and centrosome duplication. It is also a crucial regulator of p53; it is involved in the acute response of mammalian cells to environmental stress, such as UV rays. NPM continuously shuttles between the nucleus and cytoplasm. NPM also localises between the paired centrioles of the centrosome and dissociates upon the phosphorylation of on Thr199 by CDK2/cyclin E prior to the initiation of centrosome duplication, an essential process for successful chromosome segregation during mitosis. The down-regulation of this protein results in the abnormal amplification of centrosomes which suggests that this protein may act as a suppressor of centrosome duplication.

### PUBLICATION DESCRIBING ANTIBODY CHARACTERIZATION/VALIDATION

---

Blood. 1999 Jan 15;93(2):632-42.

Detection of normal and chimeric nucleophosmin in human cells.

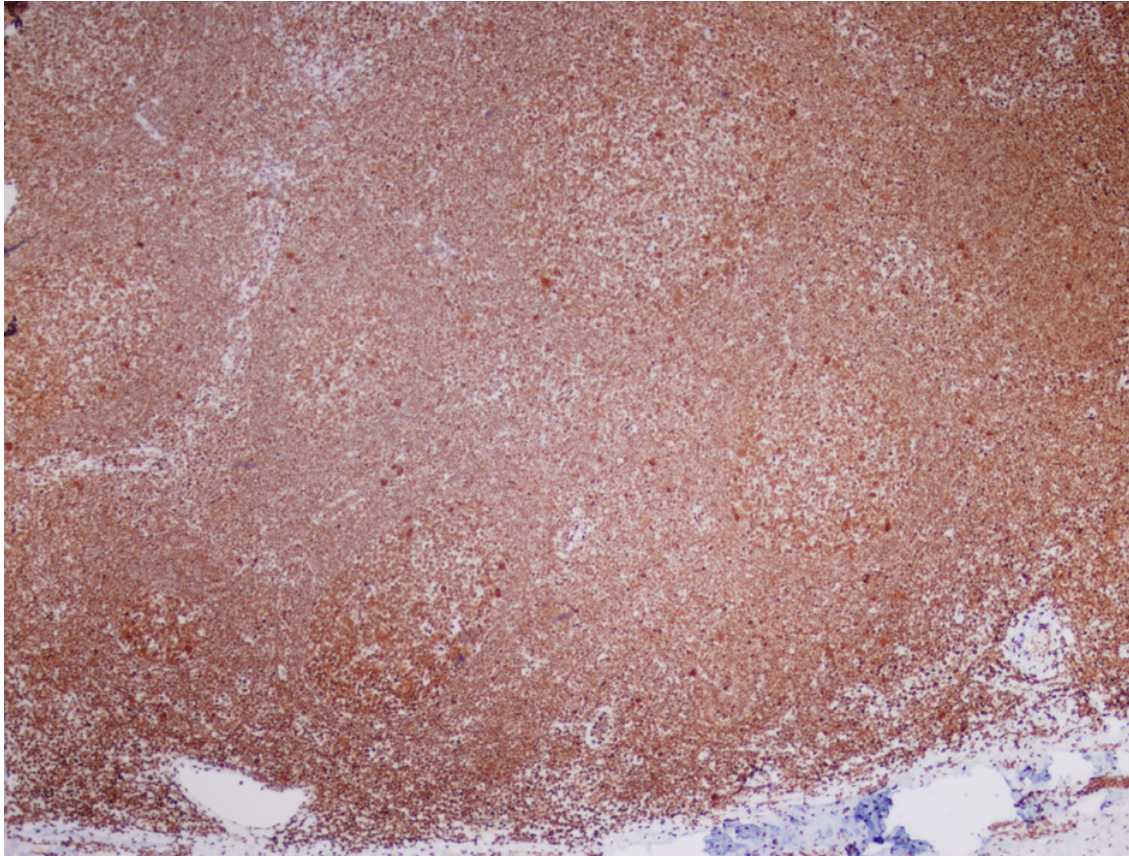
Cordell JL1, Pulford KA, Bigerna B, Roncador G, Banham A, Colombo E, Pelicci PG, Mason DY, Falini B.

PMID: 9885226

<https://www.ncbi.nlm.nih.gov/pubmed/9885226>

## APPLICATIONS

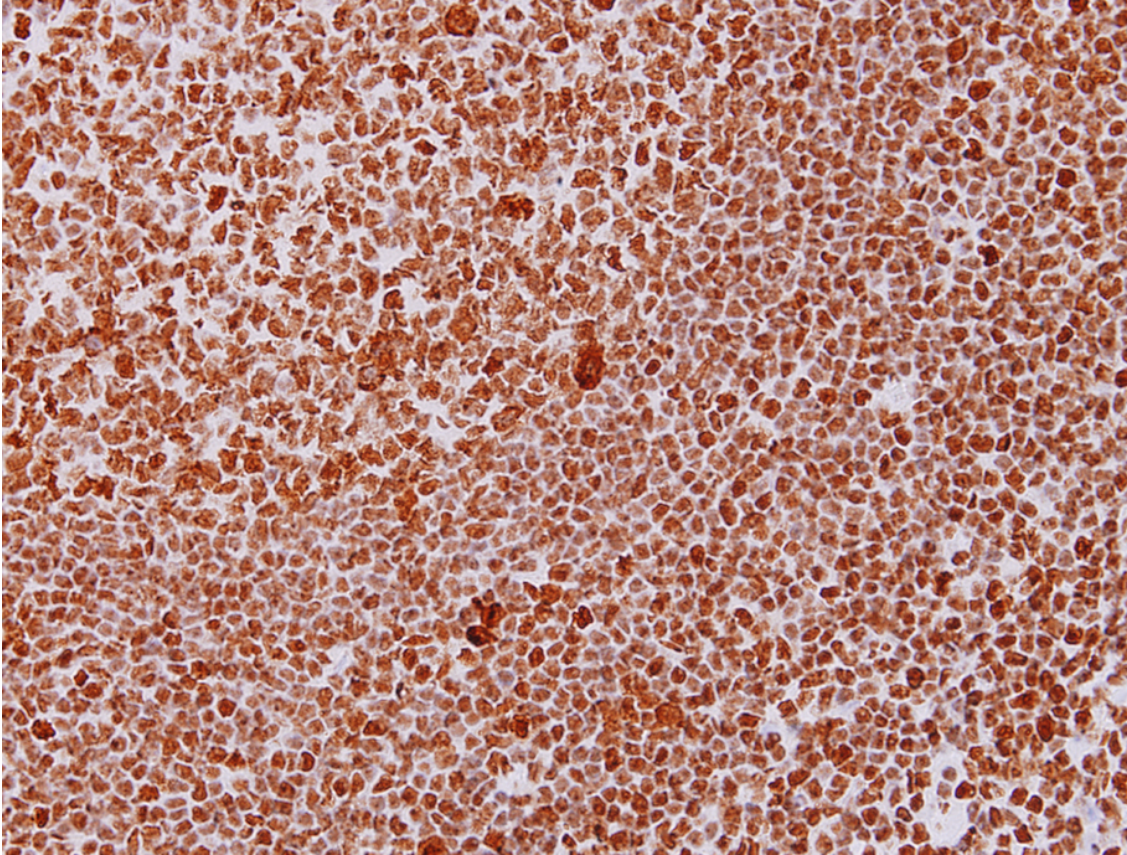
IHC Techniques	Clone	Dilution	Antibody concentration	Antigen retrieval method	Visualization kit	Positive control	Negative control	Protein localization	Positivity in other species
Frozen tissue and cytopins									
Paraffin tissue									
	NA24	neat	supernatant	Tris EDTA	Dako Envision	Tonsil			
Immunofluorescence									



**NA24 Tonsil**

Tonsil stained with neat supernatant from NA24 hybridoma, detection using Dako Envision kit, 4x power image





**NA24 Tonsil**

Tonsil stained with neat supernatant from bcl-2/124 hybridoma, detection using Dako Envision kit, 20x power image