

Transferrin receptor

CONTACT INFORMATION:	University of Oxford marketed by Ximbio.com
TYPE:	mouse anti human
CLONE NAME:	Q1/71
PROTEIN:	Transferrin receptor (CD71)
PROTEIN WEB:	https://www.omim.org/entry/190010
ANTIGEN USED:	Foetal liver cells
FUSION PARTNER:	P3/NS1/1-Ag4.1
ISOTYPE:	IgG1
SPECIES REACTIVITY:	Human
PREPARATION AND STORAGE:	Aliquot and store at 4C. Do not freeze
COMMERCIALIZED BY:	Ximbio.com
APP RECOMMENDED:	FACS IHC WB

DESCRIPTION

The transferrin receptor is a glycoprotein composed of disulfide-linked polypeptide chains. It is ubiquitously distributed on the cell surface of actively growing human cells. Q1/71 can be used as a marker of proliferation.

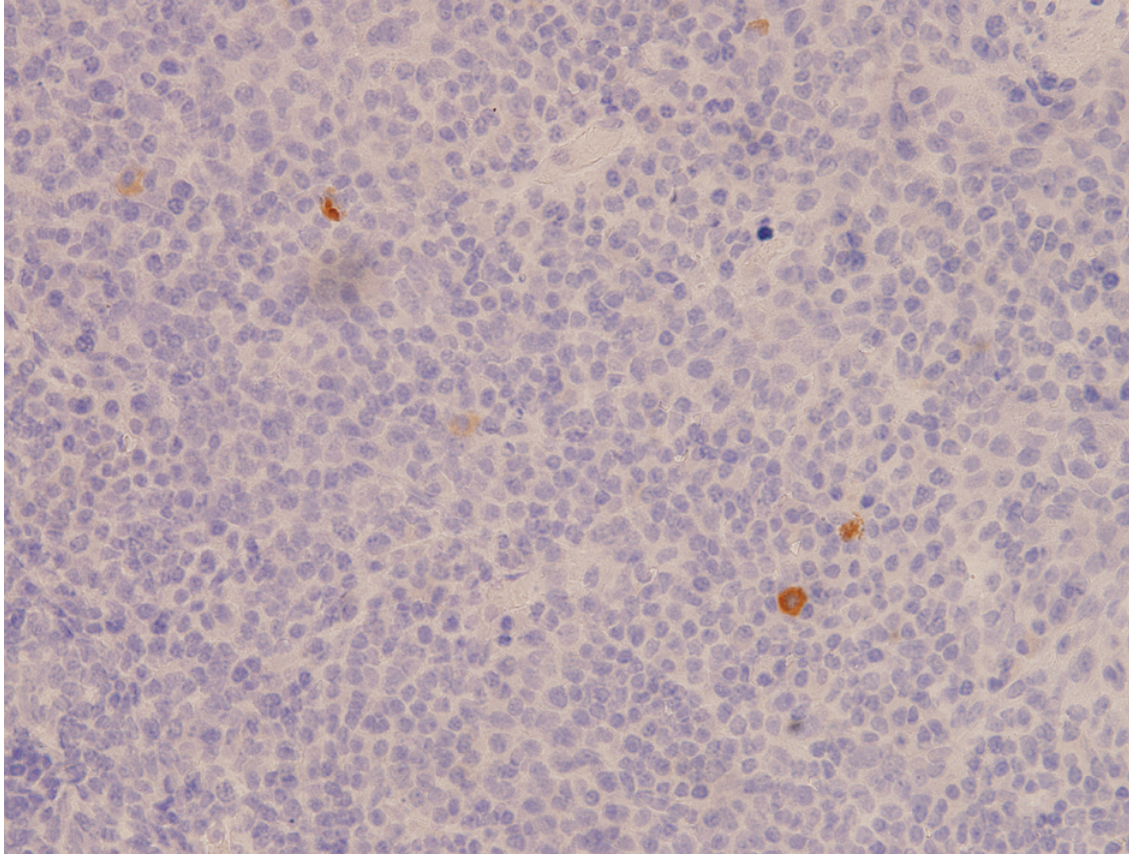
REFERENCES

CD Guide for CD71 (1989) In Knapp W, et al (eds) Leucocyte Typing IV, Oxford University Press, Oxford, New York and Tokyo, p 1091

APPLICATIONS

IHC Techniques	Clone	Dilution	Antibody concentration	Antigen retrieval method	Visualization kit	Positive control	Negative control	Protein localization	Positivity in other species
Frozen tissue and cytopspins									
Paraffin tissue									

	Q1/71	neat	supernatant	Citrate	Dako Envision	Tonsil			
Immunofluorescence									



Q1/71 Tonsil

Tonsil stained with neat supernatant from Q1/71 hybridoma, detection using Dako Envision kit, 20x power image