

Spectrin

CONTACT INFORMATION:	University of Oxford marketed by Ximbio.com
TYPE:	mouse anti human
CLONE NAME:	RG/26
PROTEIN:	Spectrin
ANTIGEN USED:	Red cell membranes
FUSION PARTNER:	P3/NS1/1-Ag4.1
ISOTYPE:	IgG2a
SPECIES REACTIVITY:	Human
PREPARATION AND STORAGE:	Aliquot and store at 4C. Do not freeze
COMMERCIALIZED BY:	Ximbio.com
APP RECOMMENDED:	IHC IF IP WB

DESCRIPTION

Spectrin is a cytoskeletal protein that lines the intracellular side of the plasma membrane of many cell types in pentagonal or hexagonal arrangements, forming a scaffolding and playing an important role in maintenance of plasma membrane integrity and cytoskeletal structure. In certain types of brain injury such as diffuse axonal injury, spectrin is irreversibly cleaved by the proteolytic enzyme calpain, destroying the cytoskeleton. Spectrin cleavage causes the membrane to form blebs and ultimately to be degraded, usually leading to cell death.

REFERENCES

- Vox Sang. 2014 Jan;106(1):45-54. doi: 10.1111/vox.12074. Epub 2013 Aug 2.
Impact of constant storage temperatures and multiple warming cycles on the quality of stored red blood cells.
Wagner T1, Pabst MA, Leitinger G, Reiter U, Kozma N, Lanzer G, Huppertz B.
PMID: 23909508
<https://www.ncbi.nlm.nih.gov/pubmed/23909508>
- Asian Pac J Allergy Immunol. 2008 Mar;26(1):37-45.

Host vascular endothelial growth factor is trophic for Plasmodium falciparum-infected red blood cells.

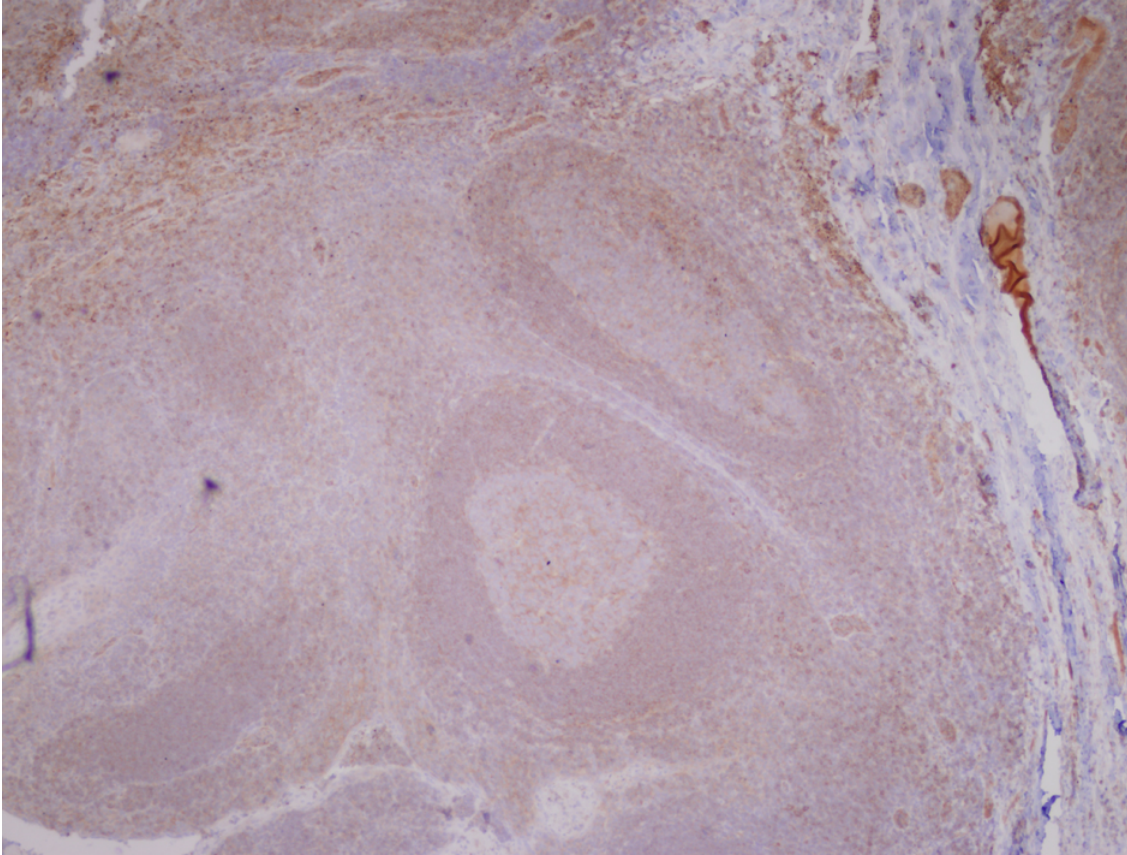
Sachanonta N1, Medana IM, Roberts R, Jones M, Day NP, White NJ, Ferguson DJ, Turner GD, Pongponratn E.

PMID: 18595528

<https://www.ncbi.nlm.nih.gov/pubmed/18595528>

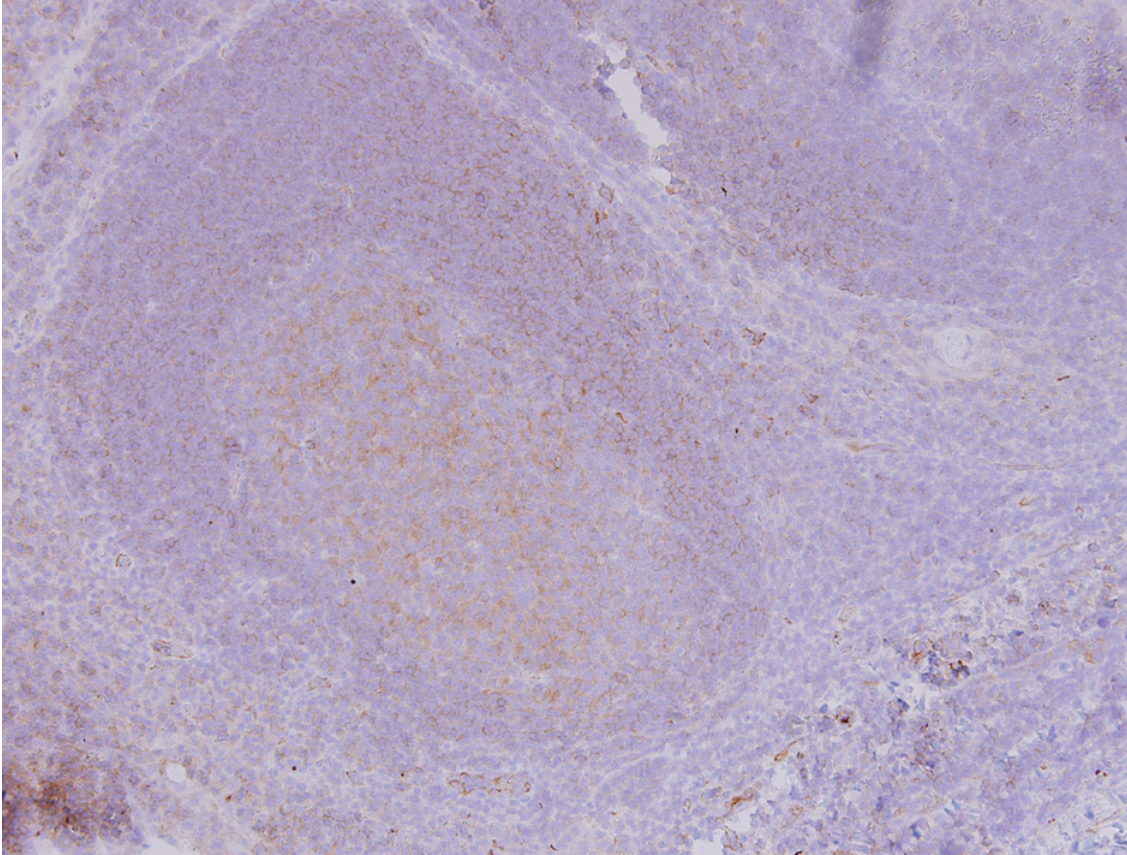
APPLICATIONS

IHC Techniques	Clone	Dilution	Antibody concentration	Antigen retrieval method	Visualization kit	Positive control	Negative control	Protein localization	Positivity in other species
Frozen tissue and cytopins									
Paraffin tissue									
	RG/26	neat	supernatant	Tris EDTA	Dako Envision	Tonsil			
Immunofluorescence									



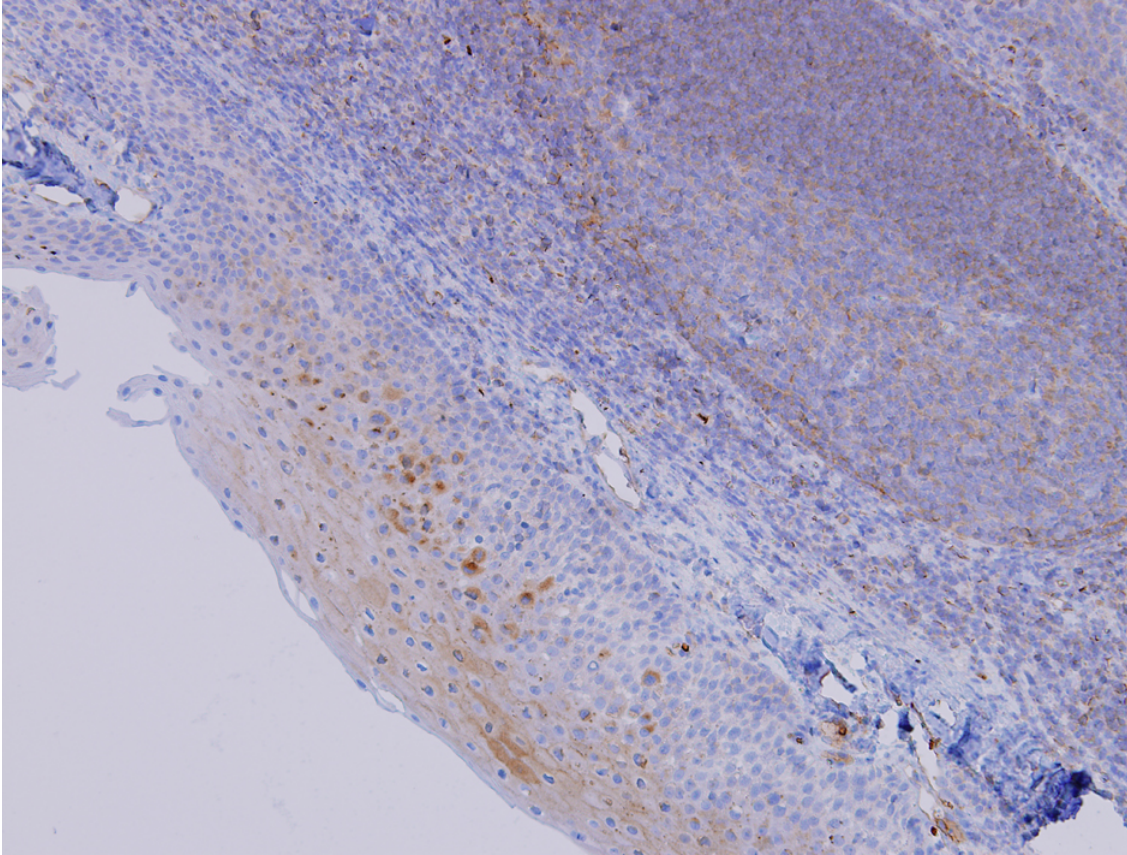
RG/26 Tonsil

Tonsil stained with neat supernatant from RG/26 hybridoma, detection using Dako Envision kit, 4x power image



RG/26 Tonsil

Tonsil stained with neat supernatant from RG/26 hybridoma, detection using Dako Envision kit, 10x power image



RG/26 Tonsil

Tonsil stained with neat supernatant from RG/26 hybridoma, detection using Dako Envision kit, 10x power image