

## BCL7A

CONTACT INFORMATION:	Monoclonal Antibodies Unit. Centro Nacional de Investigaciones Oncológicas
STATUS:	Validated
TYPE:	mouse anti human
CLONE NAME:	15C
PROTEIN:	Bcl7a human full length
PROTEIN WEB:	<a href="http://www.ncbi.nlm.nih.gov/omim/601406">http://www.ncbi.nlm.nih.gov/omim/601406</a>
ANTIGEN USED:	His-GST-Bcl7a recombinant protein
FUSION PARTNER:	myeloma p3-NS1/Ag4-1 (NS1) cells
ISOTYPE:	IgG1
SPECIES REACTIVITY:	human and mouse
PREPARATION AND STORAGE:	Aliquot and store at 4C. Do not freeze
APP RECOMMENDED:	IHQ-paraffin, IF
APP NO RECOMMENDED:	WB, IHQ-frozen
APP NO TESTED:	IP, Flow cytometry

### DESCRIPTION

---

This gene is directly involved, with Myc and IgH, in a three-way gene translocation in a Burkitt lymphoma cell line. As a result of the gene translocation, the N-terminal region of the gene product is disrupted, which is thought to be related to the pathogenesis of a subset of high-grade B cell non-Hodgkin lymphoma.

### PUBLICATION DESCRIBING ANTIBODY CHARACTERIZATION/VALIDATION

---

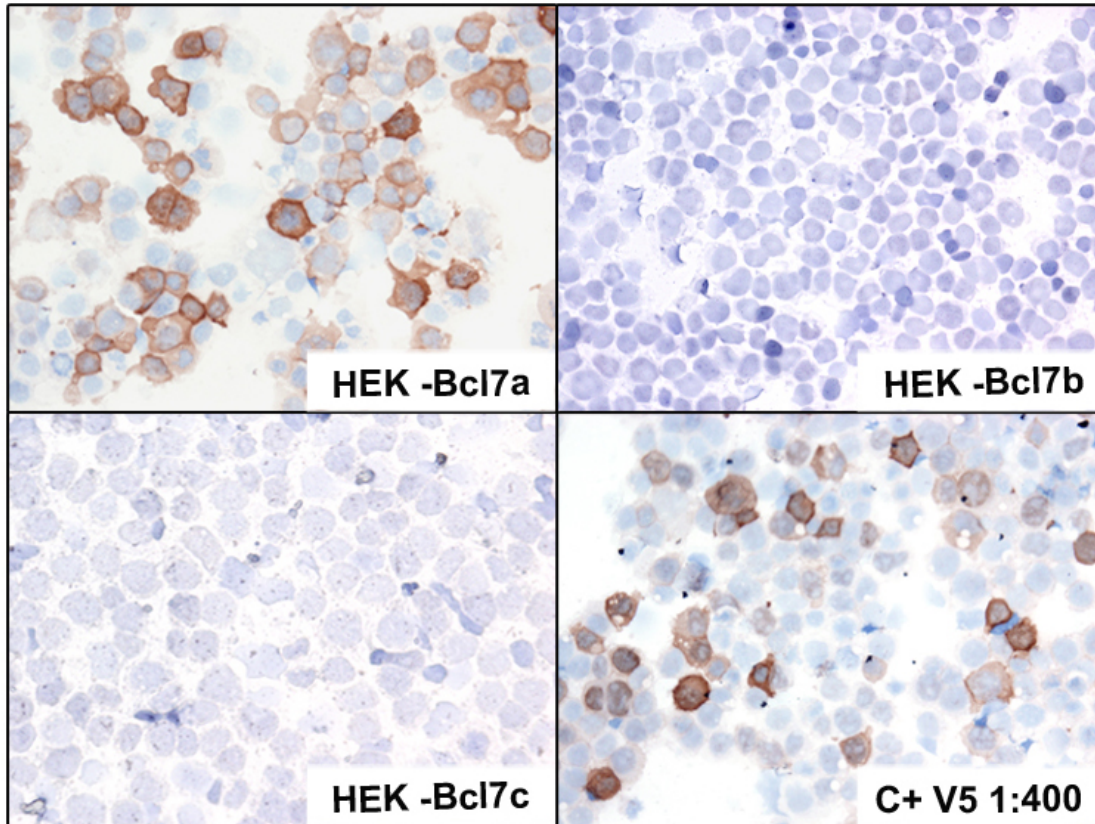
BCL7A protein expression in normal and malignant lymphoid tissues. Ramos-Medina R, Montes-Moreno S, Maestre L, Cañamero M, Rodríguez-Pinilla M, Martínez-Torrecedrada J, Piris MÁ, Majid A, Dyer MJ, Pulford K, Roncador G. Br J Haematol. 2013 Jan;160(1):106-9.

### APPLICATIONS

---

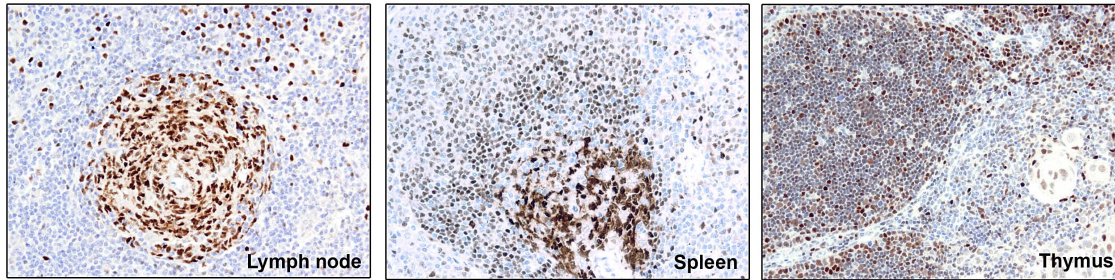
## Monoclonal Antibodies Catalogue

IHC Techniques	Clone	Dilution	Antibody concentration	Antigen retrieval method	Visualization kit	Positive control	Negative control	Protein localization	Positivity in other species
<b>Frozen tissue and cytopspins</b>									
Recommended	15C	1:20	supernatant		goar anti mouse HRP DAKO	Tonsil		nuclear	mouse
<b>Paraffin tissue</b>									
Recommended	15C	1:40	supernatant	Tris-EDTA	ER2 20min Novolink	Tonsil		nuclear	mouse
<b>Immunofluorescence</b>									
Recommended	15C	1:20	supernatant	tris-EDTA		Tonsil		nuclear	mouse



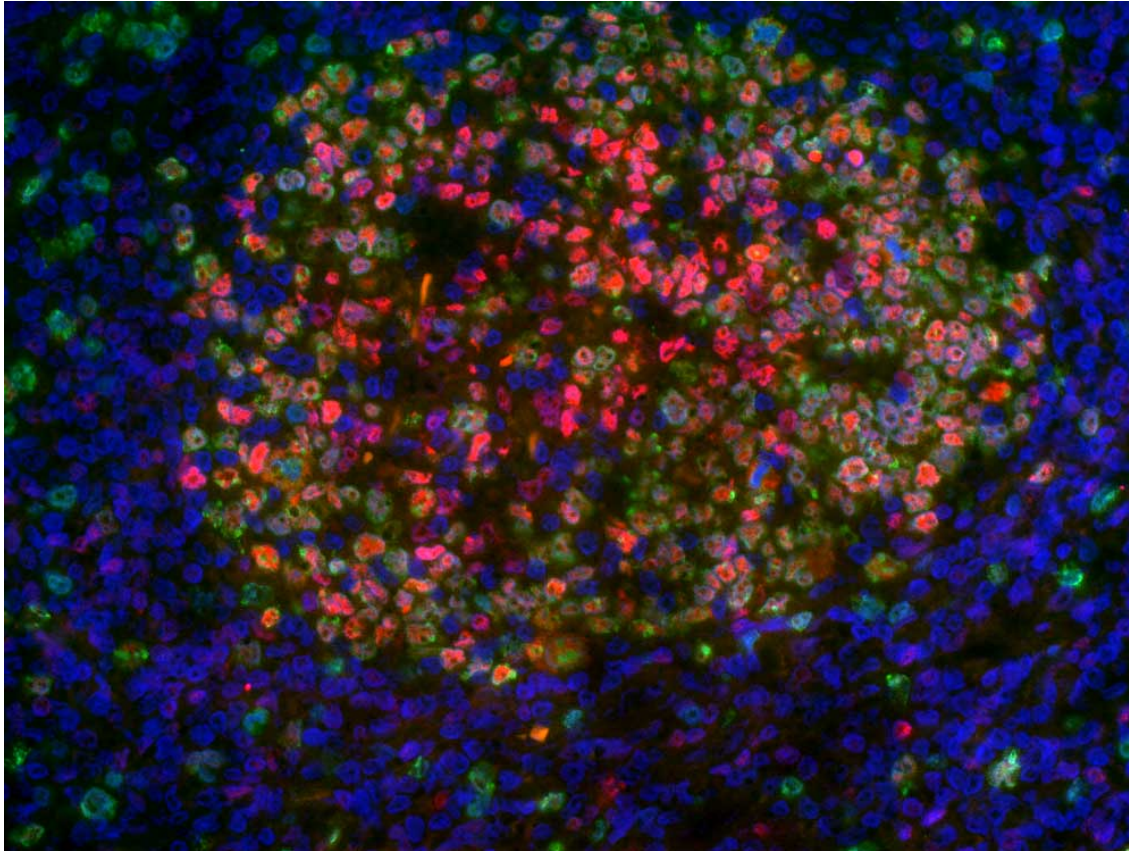
**BCL7A antibody (15C) in transfected cells**

Nuclear and cytoplasmic staining of BCL7A mAb in transfected HEK293-BCL7A cells. No reactivity with BCL7 family members Bcl7b, Bcl7c was found.



### **15C staining in human lymphoid tissue**

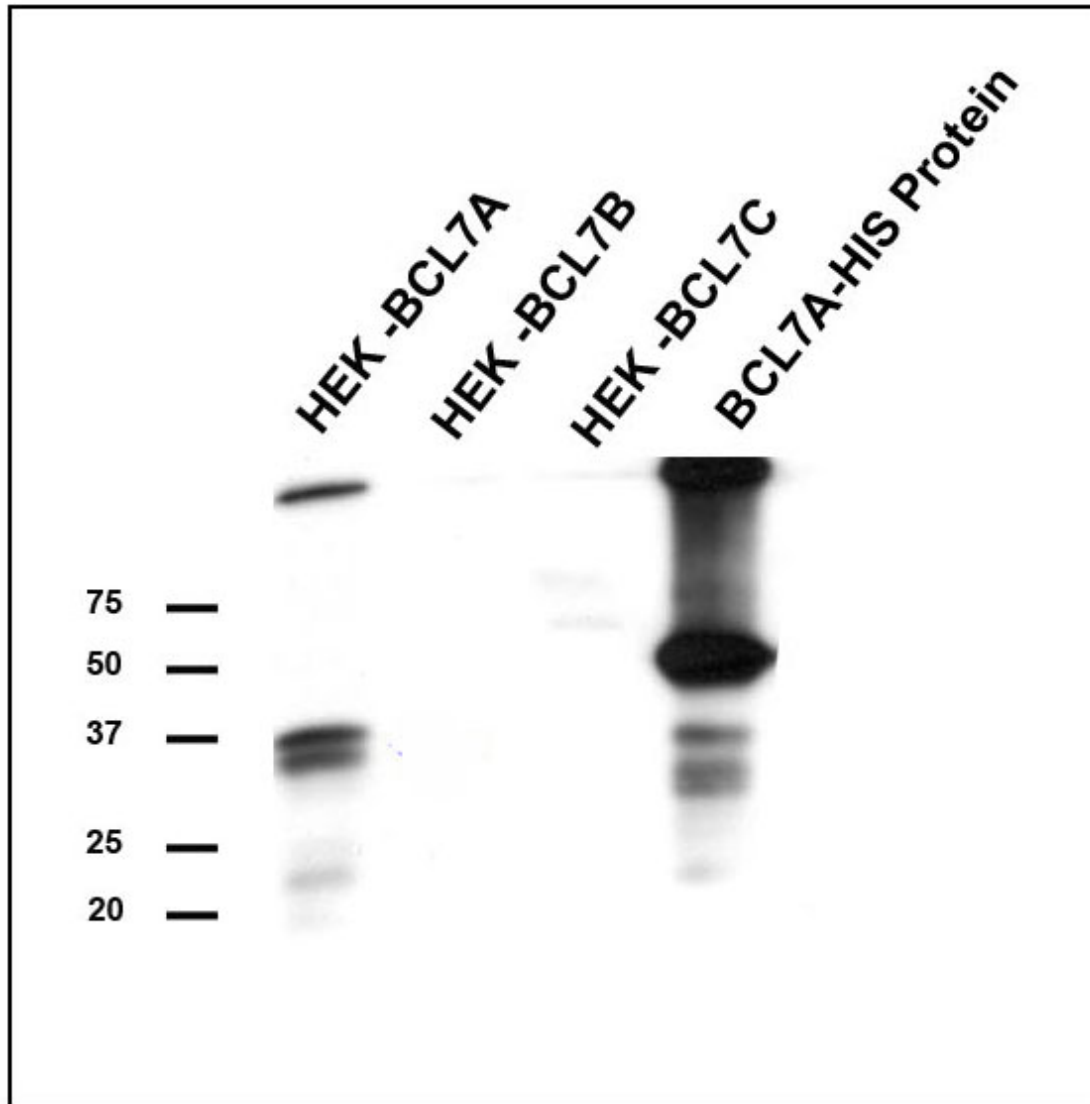
BCL7A is expressed in the nuclei of germinal center (GC) B cells and in mantle cells. Some cells in the interfollicular area are also BCL7A positives. Spleen showing BCL7a staining of GC B cells, mantle cells and marginal zone lymphocytes (weak staining) (b). Normal thymus shows Bcl7a staining mainly in T-cells in the cortex, however, some BCL7A positive cells can also be found in the medulla (c).



**BCL7A (15C) immunofluorescence in human paraffin tonsil**

BCL7A (15C) nuclear protein in red, ki67 nuclear staining in green and DAPI staining in blue.

WB Techniques	Clone	Dilution	Antibody concentration	Positive control	Negative control	Expected MW	Observed Mw	Positivity in other species
<b>Western Blotting</b>								
Inconclusive	15C	neat	supernatant	raji	I540	26kDa	30kDa	
<b>Immunoprecipitation</b>								



**WB of Bcl7a (clone15C) mAB**

Western Blotting using cell extracts of cells transfected with BCL7A, BCL7B, and BCL7C expression vectors. A 35 kDa band was detected in HEK293T BCL7A cell extract but was absent in HEK293T BCL7B and BCL7C transfectants.

- Lane 1 Hek-Bcl7a trasfected cells (20ug) (+)
- Lane 2 Hek-Bcl7b transfected cells (20ug) (-)
- Lane 3 Hek-Bcl7c transfected cells (20ug) (-)
- Lane 4 Bcl7a-HIS recombinant protein (0.1ug) (+)



### WB of 15C mAn in human cell lines

Antibody 15C is not able to detect BCL7A endogenous protein by WB.

Predicted molecular weight: 26kDa

Observed molecular weight: 31kDa

Lanes

- Lane 1 Transfected Hek-pcdna3-V5-Bcl7a (20?g) (+)
- Lane 2 Transfected Hek-pcdna3-Bcl7b (20?g) (-)
- Lane 3 Transfected Hek-pcdna3-Bcl7c (20?g) (-)
- Lane 4 Hela (200?g) (-)
- Lane 5 DOHH2 (200?g) (+)
- Lane 6 L540 (200?g) (-)
- Lane 7 Raji (200?g) (-)

