

Integrin b3

CONTACT INFORMATION:	University of Oxford marketed by Ximbio.com
TYPE:	mouse anti human
CLONE NAME:	Y2/51
PROTEIN:	Integrin $\beta 3$ (CD61; GPIIIa)
PROTEIN WEB:	https://www.omim.org/entry/173470
ANTIGEN USED:	Phytohaemagglutinin-stimulated peripheral blood cells
FUSION PARTNER:	P3/NS1/1-Ag4.1
ISOTYPE:	IgG1
SPECIES REACTIVITY:	Human
PREPARATION AND STORAGE:	Aliquot and store at 4C. Do not freeze
COMMERCIALIZED BY:	Ximbio.com
APP RECOMMENDED:	FACS IHC IF WB

DESCRIPTION

CD61 is expressed by megakaryocytes, platelets and osteoclasts. Y2/51 is widely used as a marker of megakaryocytes in bone marrow trephines.

PUBLICATION DESCRIBING ANTIBODY CHARACTERIZATION/VALIDATION

Histopathology. 1988 Sep;13(3):257-67.

The immunohistological detection of platelets, megakaryocytes and thrombi in routinely processed specimens.

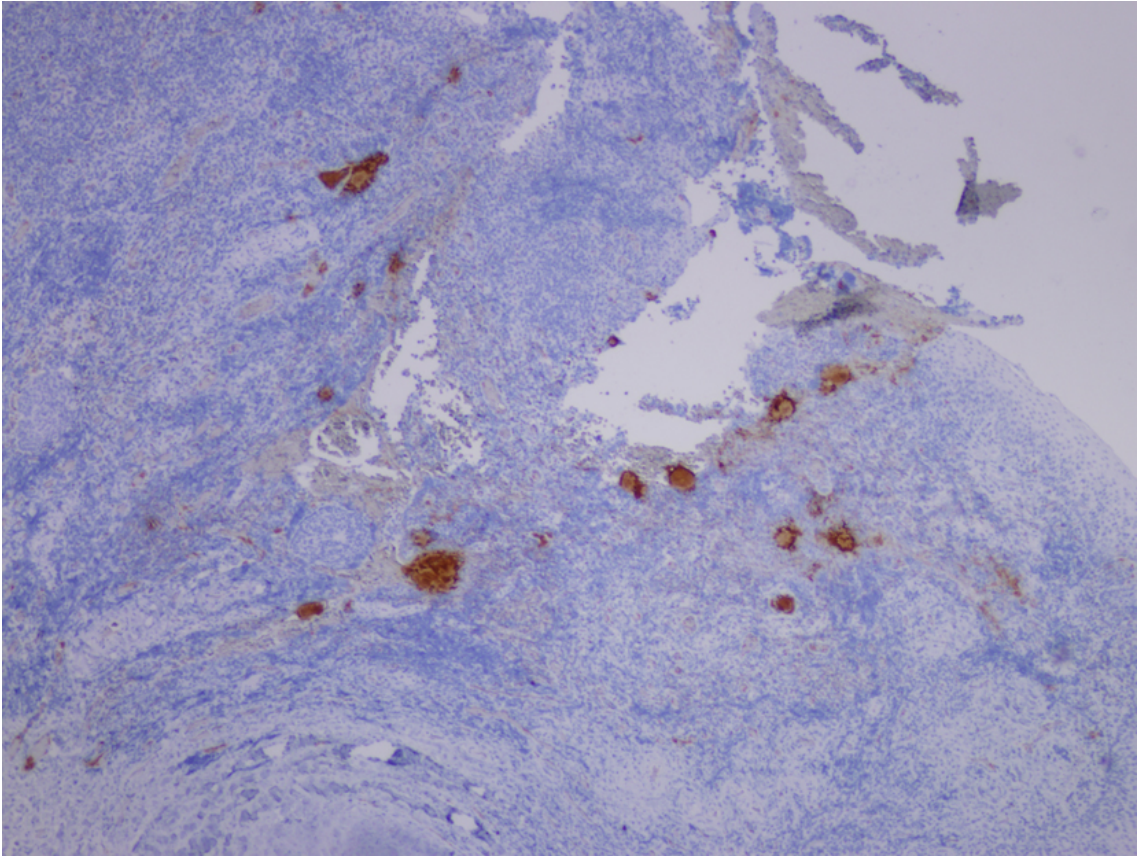
Gatter KC1, Cordell JL, Turley H, Heryet A, Kieffer N, Anstee DJ, Mason DY.

PMID: 3192191

<https://www.ncbi.nlm.nih.gov/pubmed/3192191>

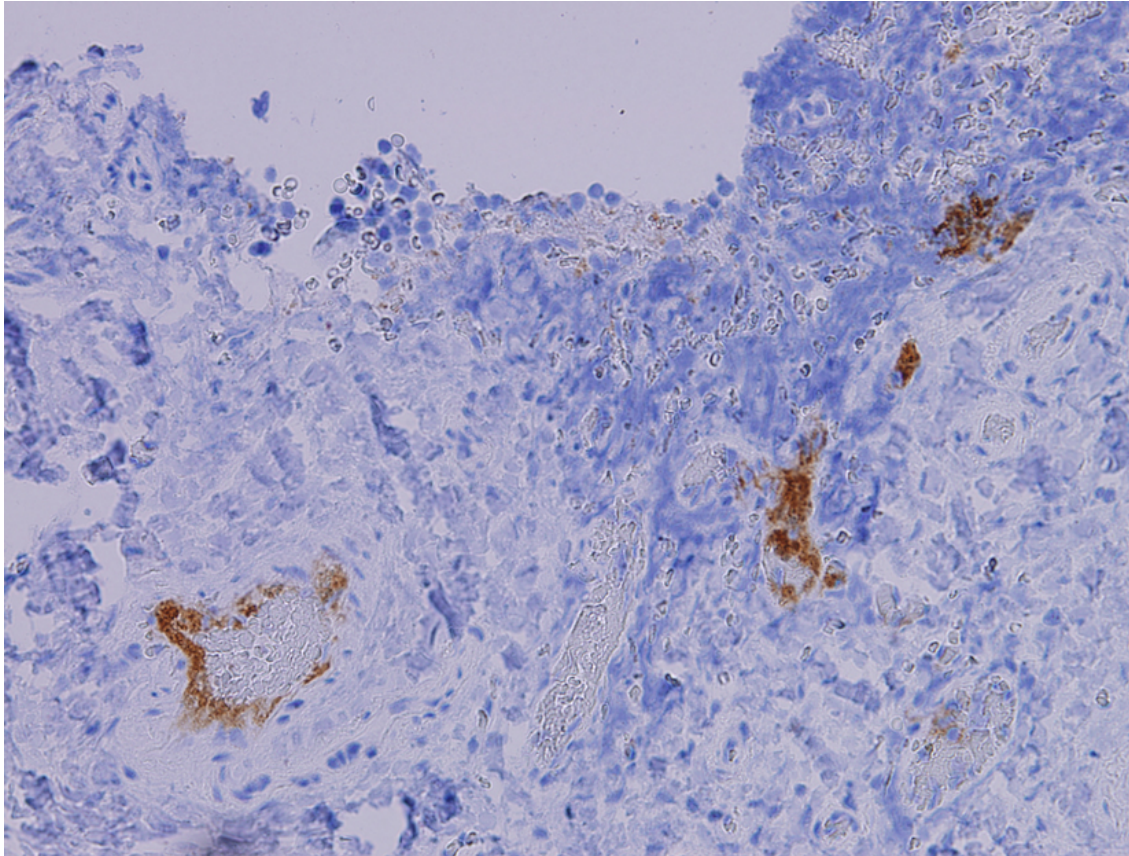
APPLICATIONS

IHC Techniques	Clone	Dilution	Antibody concentration	Antigen retrieval method	Visualization kit	Positive control	Negative control	Protein localization	Positivity in other species
Frozen tissue and cytopspins									
Paraffin tissue									
	Y2/51	neat	supernatant	Citrate	Dako envision	Tonsil			
Immunofluorescence									



Y2/51 Tonsil

Tonsil stained with neat supernatant from Y2/51 hybridoma, detection using Dako Envision kit, 4x power image



Y2/51 Tonsil

Tonsil stained with neat supernatant from Y2/51 hybridoma, detection using Dako Envision kit, 20x power image