

CD20

CONTACT INFORMATION:	Monoclonal Antibodies Unit. Centro Nacional de Investigaciones Oncológicas
STATUS:	Validated
TYPE:	Rat monoclonal
CLONE NAME:	GOT214A
PROTEIN:	mouse CD20 (B-lymphocyte antigen CD20/Ms4a1)
PROTEIN WEB:	https://www.uniprot.org/uniprot/P19437
ANTIGEN USED:	RBL-1-mCD20 transfected cells
FUSION PARTNER:	myeloma p3-NS1/Ag4-1 (NS1) cells
ISOTYPE:	IgG2a
SPECIES REACTIVITY:	mouse
PREPARATION AND STORAGE:	Aliquot and store at 4C. Do not freeze
COMMERCIALIZED BY:	Abcam

DESCRIPTION

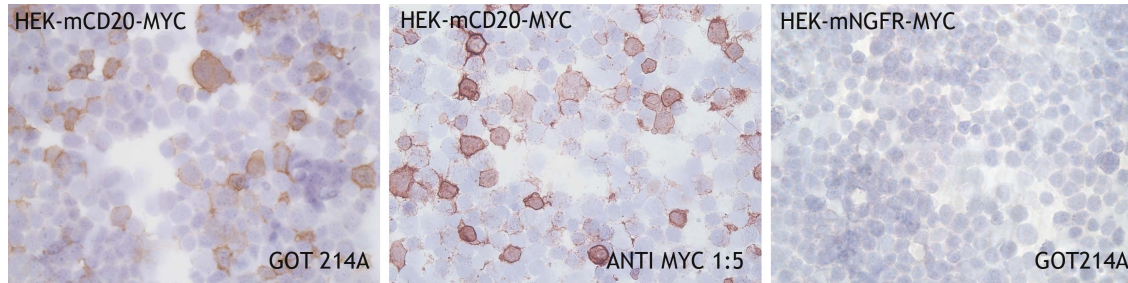
B-lymphocyte-specific membrane protein that plays a role in the regulation of cellular calcium influx necessary for the development, differentiation, and activation of B-lymphocytes. Functions as a store-operated calcium (SOC) channel component promoting calcium influx after activation by the B-cell receptor/BCR.

APPLICATIONS

IHC Techniques	Clone	Dilution	Antibody concentration	Antigen retrieval method	Visualization kit	Positive control	Negative control	Protein localization	Positivity in other species
Frozen tissue and cytopspins									
Recommended	GOT2 14A	neat	supernatant					membrane	
Paraffin tissue									

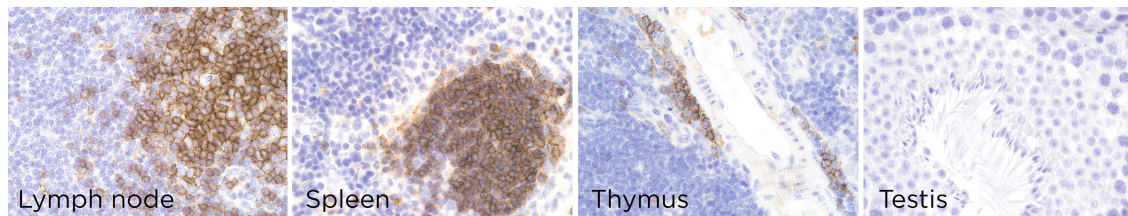
Recommended	GOT2 14A	1:15	supernatant	Heat High pH9 at 95°C 20 min		lymph node	Testis	membrane	
-------------	-------------	------	-------------	---------------------------------	--	------------	--------	----------	--

Immunofluorescence



GOT214A antibody in HEK293 transfected cells

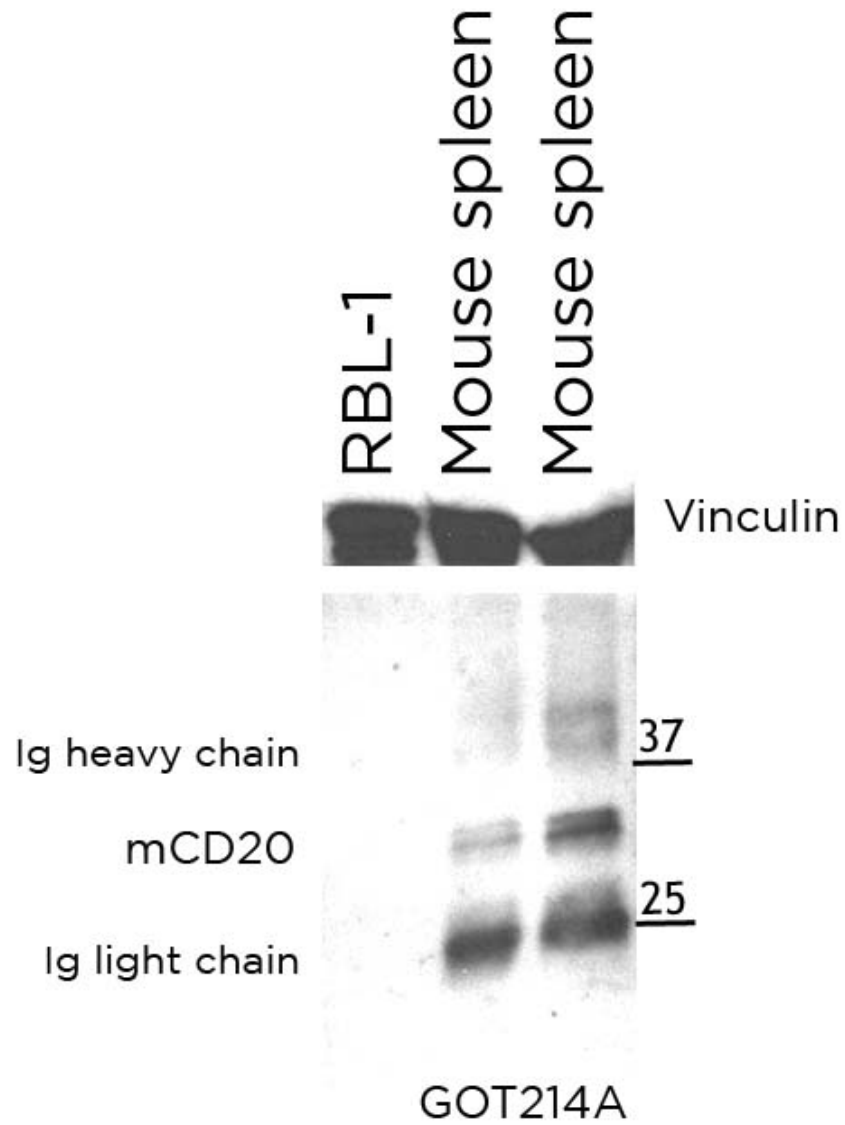
To confirm that GOT214A mAb recognizes mouse CD20 protein, immunocytochemistry on frozen cytopins preparation of mouse CD20 expressed in HEK293T was performed. Anti-MYC Ab was used as a positive control. Cytopsin preparation of mouse NGFR transfected cells was used as negative control.



GOT214A mAb can be used to detect mouse CD20 protein in mouse paraffin tissues

WB Techniques	Clone	Dilution	Antibody concentration	Positive control	Negative control	Expected MW	Observed Mw	Positivity in other species
Western Blotting								
Recommended	GOT214 A	Neat	supernatant	spleen				

Immunoprecipitation



GOT214A mAb is able to detect mouse CD20 protein by WB.

Predicted molecular weight: 32kDa

Observed molecular weight: 32kDa

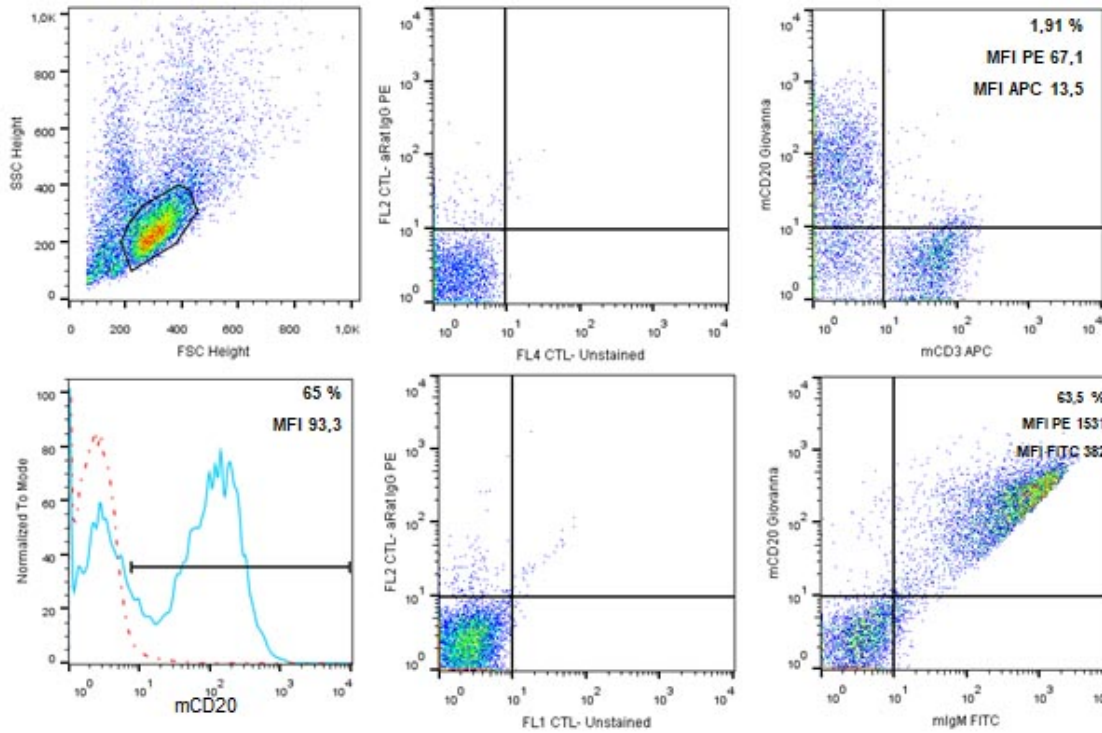
LANES

Lane 1 rat RBL-1 cell line (80ug) (-)

Lane 2 Mouse spleen extract (80ug) (+)

Lane 3 Mouse spleen extract (100ug) (-)

FLOW CYTOMETRY	Clone	Dilution	Positive control	Negative control	Type of fluorocrom
Recommended	GOT214A	1:400 purified antibody	mouse spleen		



GOT214A mAb can be used to detect mouse CD20 protein by flow cytometry

Double immunolabelling with mCD3 and mIgM were used to test GOT214A clone.