

NGFR

| | |
|---------------------------------|---|
| CONTACT INFORMATION: | Monoclonal Antibodies Unit. Centro Nacional de Investigaciones Oncológicas |
| STATUS: | Validated |
| TYPE: | rat monoclonal |
| CLONE NAME: | NORI138B |
| PROTEIN: | NGFR Tumor necrosis factor receptor superfamily member 16 |
| PROTEIN WEB: | https://www.uniprot.org/uniprot/Q9Z0W1 |
| ANTIGEN USED: | His-mNGFR (276-427aa) protein |
| FUSION PARTNER: | myeloma p3-NS1/Ag4-1 (NS1) cells |
| ISOTYPE: | IgG2a |
| SPECIES REACTIVITY: | human and mouse |
| PREPARATION AND STORAGE: | Aliquot and store at 4C. Do not freeze |

DESCRIPTION

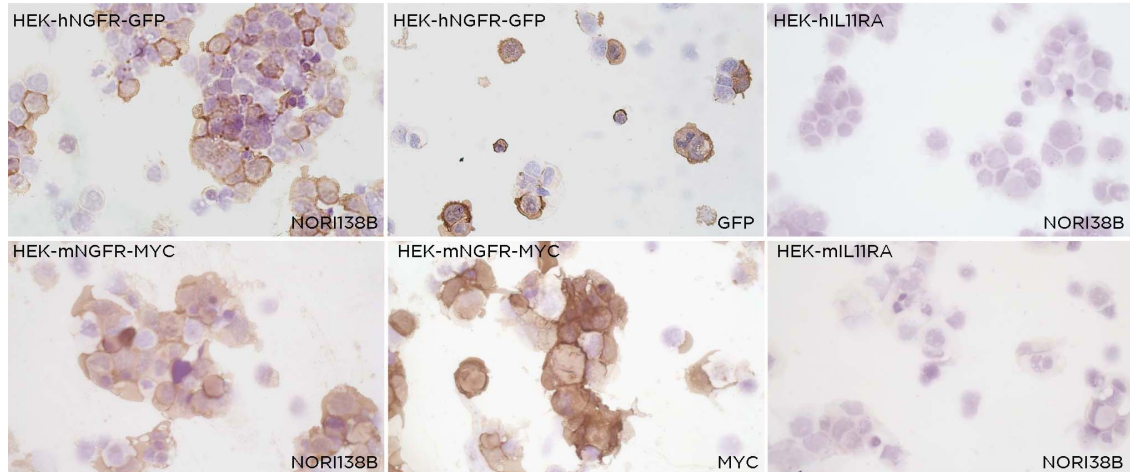
Low affinity neurotrophin receptor which can bind to mature NGF, BDNF, NTF3, and NTF4. Forms a heterodimeric receptor with SORCS2 that binds the precursor forms of NGF (proNGF), BDNF (proBDNF) and NTF3 (proNT3) with high affinity, and has much lower affinity for mature NGF and BDNF. Plays an important role in differentiation and survival of specific neuronal populations during development. Can mediate cell survival as well as cell death of neural cells.

APPLICATIONS

| IHC Techniques | Clone | Dilution | Antibody concentration | Antigen retrieval method | Visualization kit | Positive control | Negative control | Protein localization | Positivity in other species |
|-------------------------------------|----------|----------|------------------------|--------------------------|-------------------|------------------|------------------|----------------------|-----------------------------|
| Frozen tissue and cytopspins | | | | | | | | | |
| Recommended | NORI138B | neat | supernatant | | | | | | |
| Paraffin tissue | | | | | | | | | |

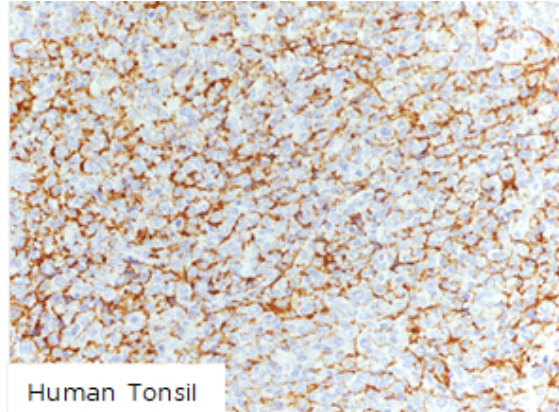
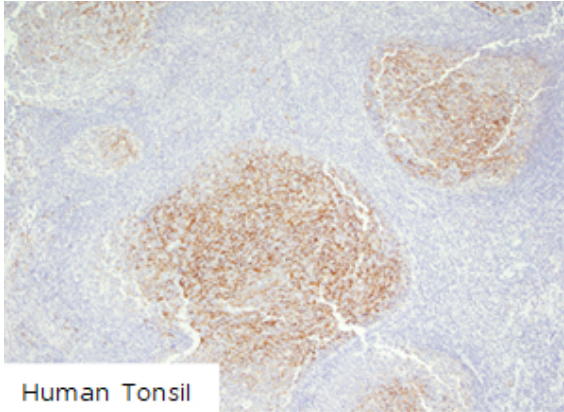
| | | | | | | | | | |
|-------------|----------|-------|-------------|--|--|--------|--|--|--|
| Recommended | NORI138B | 1:100 | supernatant | | | Tonsil | | | |
|-------------|----------|-------|-------------|--|--|--------|--|--|--|

Immunofluorescence



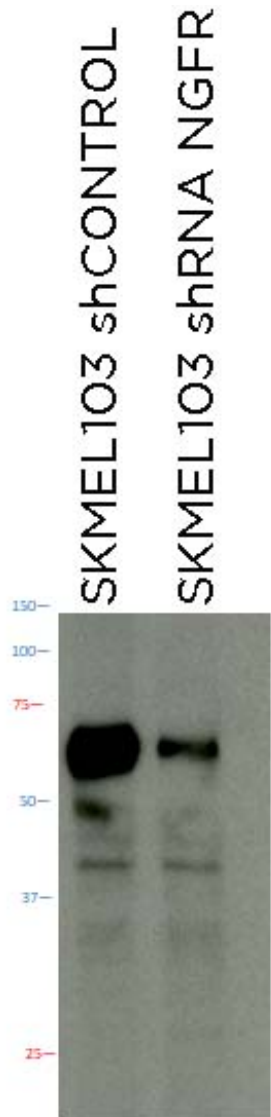
NORI138B mAb is able to detect human and mouse NGFR protein in immunocytochemistry.

To confirm if NORI138B is specific for human and mouse NGFR protein, immunocytochemistry was performed on frozen cytospin preparations of HEK293 cells tranfected with pcmv6-mNGFR-MYC-DDK and pLenti-hNGFR-mGFP. Labeling with the anti-MYC and GFP mAbs confirmed the efficiency of transfection.



NORI138B antibody can be used to detect NGFR protein in human paraffin tissues.

| WB Techniques | Clone | Dilution | Antibody concentration | Positive control | Negative control | Expected MW | Observed Mw | Positivity in other species |
|----------------------------|--------------|----------|------------------------|------------------|------------------|-------------|-------------|-----------------------------|
| Western Blotting | | | | | | | | |
| Recommended | NORI138 B | Neat | supernatant | SKMEL cell line | | 45 | 60 | |
| Immunoprecipitation | | | | | | | | |



NORI138B mAb is able to detect human NGFR protein by WB.

Predicted molecular weight: 45kDa

Observed molecular weight: 60kDa

LANES

Lane 1 Melanoma cell line SKMEL103 shCONTROL (30ug) (+)

Lane 2 Melanoma cell line SKMEL103 shRNA NGFR (30ug) (+)