

CD147 Basigin

CONTACT INFORMATION: Monoclonal Antibodies Unit. Centro Nacional de Investigaciones Oncológicas
STATUS: Validated
TYPE: mouse monoclonal
CLONE NAME: NK99C
PROTEIN: Basigin/BSG
PROTEIN WEB: <https://www.uniprot.org/uniprot/P35613>
ANTIGEN USED: YT cell line
FUSION PARTNER: NS1/Ag4-1 (NS1) cells
ISOTYPE: IgG1
SPECIES REACTIVITY: Human
PREPARATION AND STORAGE: Aliquot and store at 4C. Do not freeze

REFERENCES

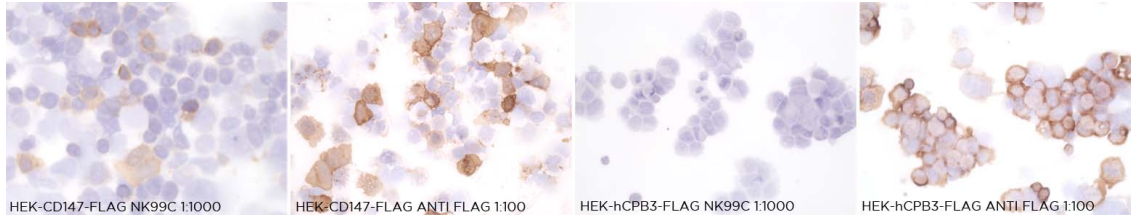
Plays an important role in targeting the monocarboxylate transporters SLC16A1, SLC16A3, SLC16A8, SLC16A11 and SLC16A12 to the plasma membrane. Plays pivotal roles in spermatogenesis, embryo implantation, neural network formation and tumor progression. Stimulates adjacent fibroblasts to produce matrix metalloproteinases (MMPS). Seems to be a receptor for oligomannosidic glycans. In vitro, promotes outgrowth of astrocytic processes.

APPLICATIONS

IHC Techniques	Clone	Dilution	Antibody concentration	Antigen retrieval method	Visualization kit	Positive control	Negative control	Protein localization	Positivity in other species
Frozen tissue and cytopins									
Recommended	NK99 C	Neat	supernatant						
Paraffin tissue									

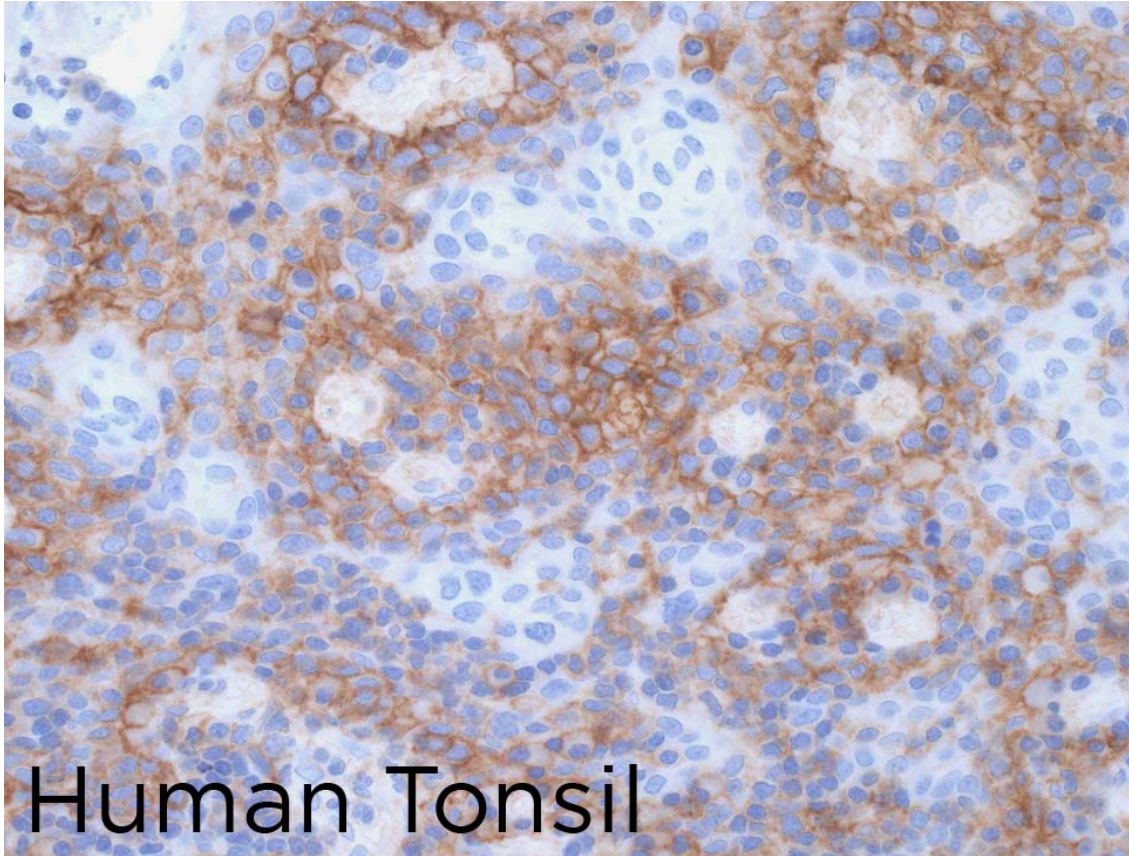
Recommended	NK99 C	1:80	supernatant						
-------------	-----------	------	-------------	--	--	--	--	--	--

Immunofluorescence



NK99C mAb in HEK transfected cells

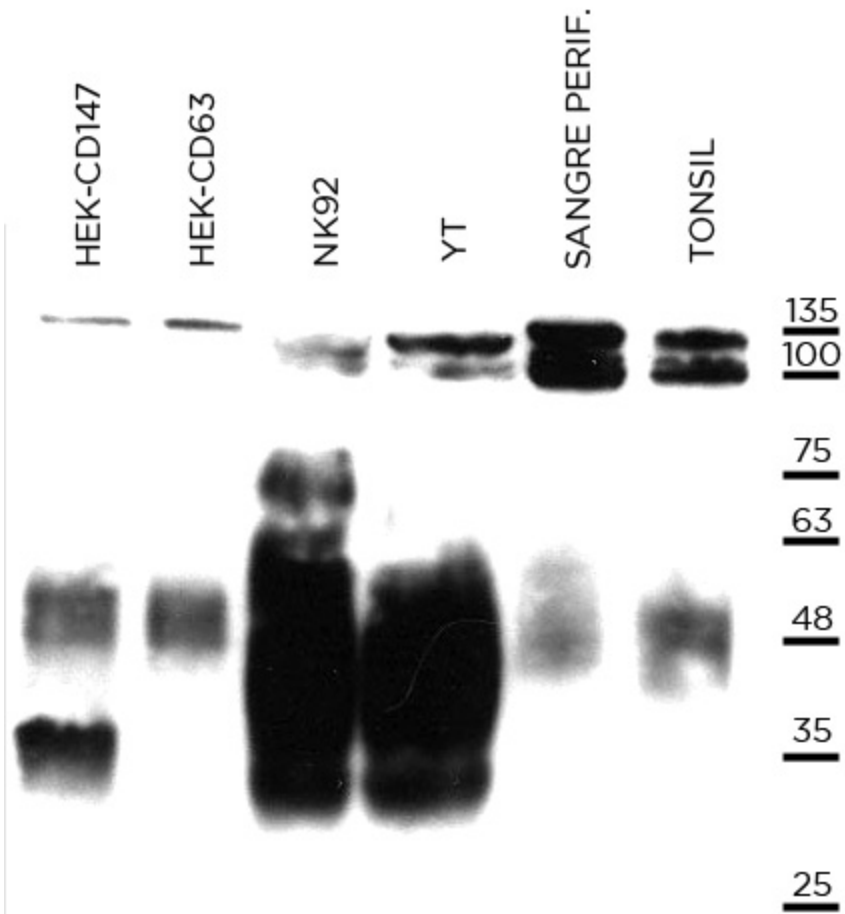
To confirm that NK99C mAb recognizes human CD147 protein, immunocytochemistry on frozen cytospin preparations of human CD147 expressed in HEK293 was performed. Anti-FLAG antibody was used as positive control. Cytospin preparation of human CPEB3 protein was used as a negative control.



NK99C antibody can be used to detect CD147 protein in human paraffin tissues.

TISSUE SAMPLE Human tonsil

WB Techniques	Clone	Dilution	Antibody concentration	Positive control	Negative control	Expected MW	Observed Mw	Positivity in other species
Western Blotting								
Recommended	NK99C	1:200	Purified	Tonsil		42kDa		
Immunoprecipitation								



ANTI-CD147 99C 1:200

NK99C mAb is able to detect human CD147 protein by WB.

LANES

Lane 1 HEK-CD147 (10ug) (+)

Lane 2 HEK-CD63 (10ug) (-)

Lane 3 NK9 cell line (100ug) (+)

Lane 4 YT cell line (100ug) (+)

Lane 5 Peripheral Blood (100ug) (-)

Lane 6 Human Tonsil (100ug) (-)