

BCL2

CONTACT INFORMATION:	Monoclonal Antibodies Unit. Centro Nacional de Investigaciones Oncológicas
STATUS:	Validated
TYPE:	Rat monoclonal
CLONE NAME:	NOR235J
PROTEIN:	Bcl2-associated agonist of cell death
PROTEIN WEB:	https://www.uniprot.org/uniprot/Q92934
ANTIGEN USED:	HIS-BCL2 full length protein
FUSION PARTNER:	NS1/Ag4-1 (NS1) cells
ISOTYPE:	IgG2b
SPECIES REACTIVITY:	Human
PREPARATION AND STORAGE:	Aliquot and store at 4C. Do not freeze

DESCRIPTION

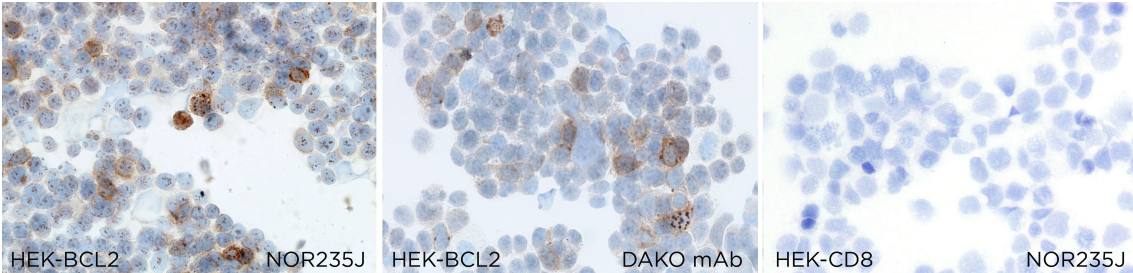
Promotes cell death. Successfully competes for the binding to Bcl-X(L), Bcl-2 and Bcl-W, thereby affecting the level of heterodimerization of these proteins with BAX. Can reverse the death repressor activity of Bcl-X(L), but not that of Bcl-2. Appears to act as a link between growth factor receptor signaling and the apoptotic pathways.

APPLICATIONS

IHC Techniques	Clone	Dilution	Antibody concentration	Antigen retrieval method	Visualization kit	Positive control	Negative control	Protein localization	Positivity in other species
Frozen tissue and cytopspins									
Recommended	NOR2 35J	Neat	supernatant						
Paraffin tissue									
Recommended	NOR2 35J	1:3	supernatant	Citrate	Novolink	Tonsil		Cytoplasm	

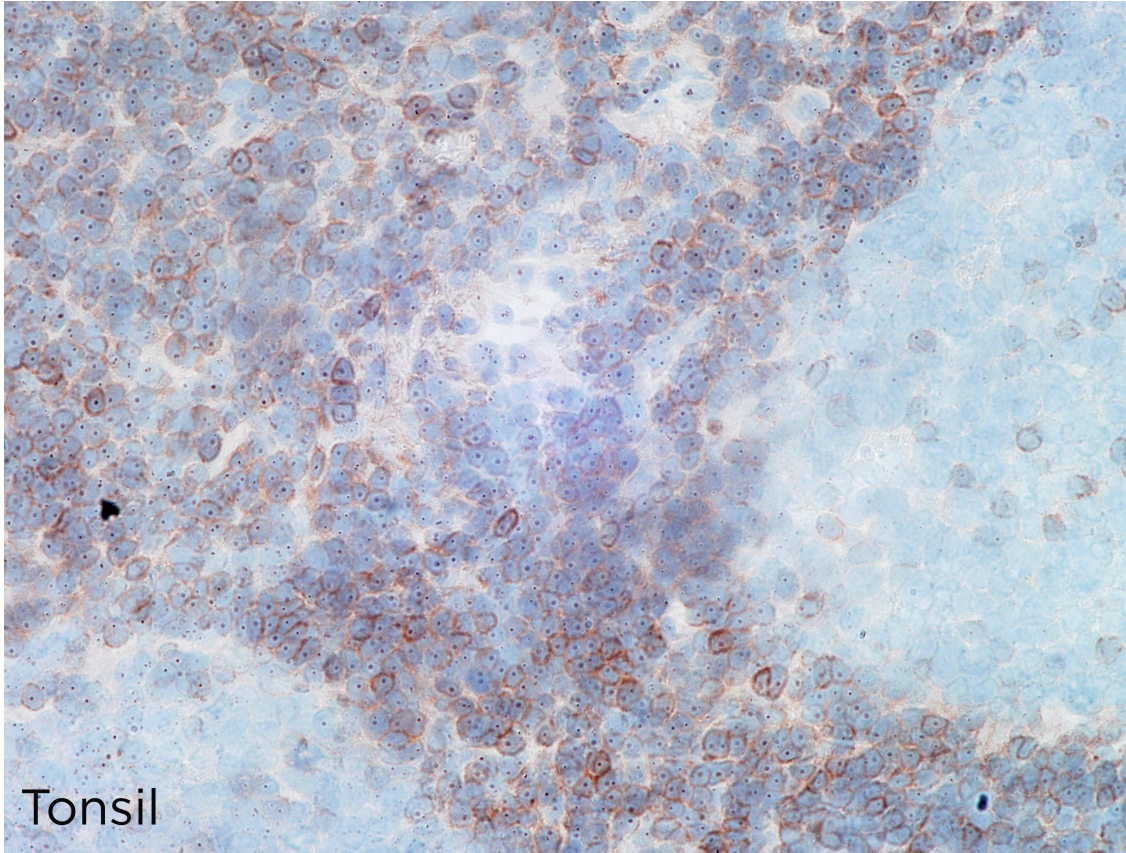
Immunofluorescence

Recommended	NOR235J	Neat	supernatant	citrate		Tonsil		Cytoplasm	
-------------	---------	------	-------------	---------	--	--------	--	-----------	--



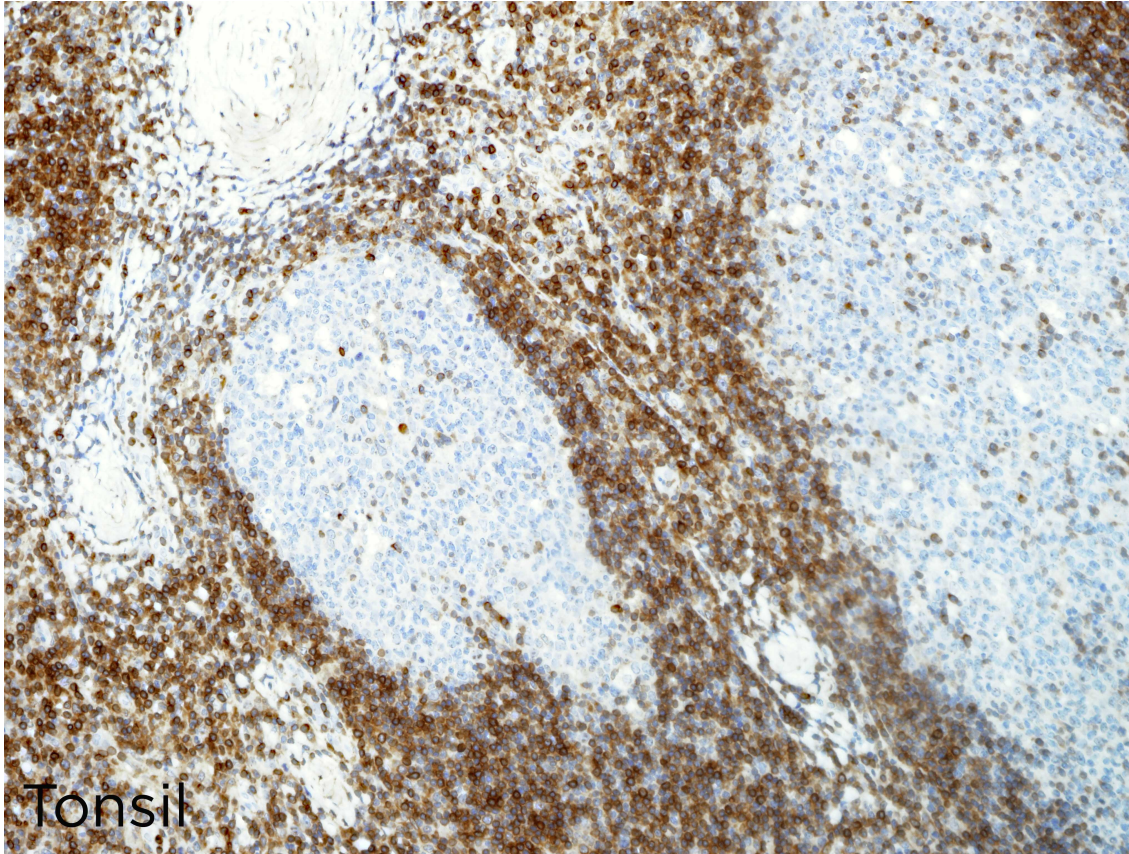
NOR235J mAb is able to detect human BCL2 protein in immunocytochemistry.

To confirm that NOR235J mAb recognizes human BCL2 protein, immunocytochemistry on frozen cytospin preparations of human BCL2 expressed in HEK293 was performed. Anti-BCL2 mAb (clone 124) was used as positive control. Cytospin preparation of human CD8 protein was used as a negative control.

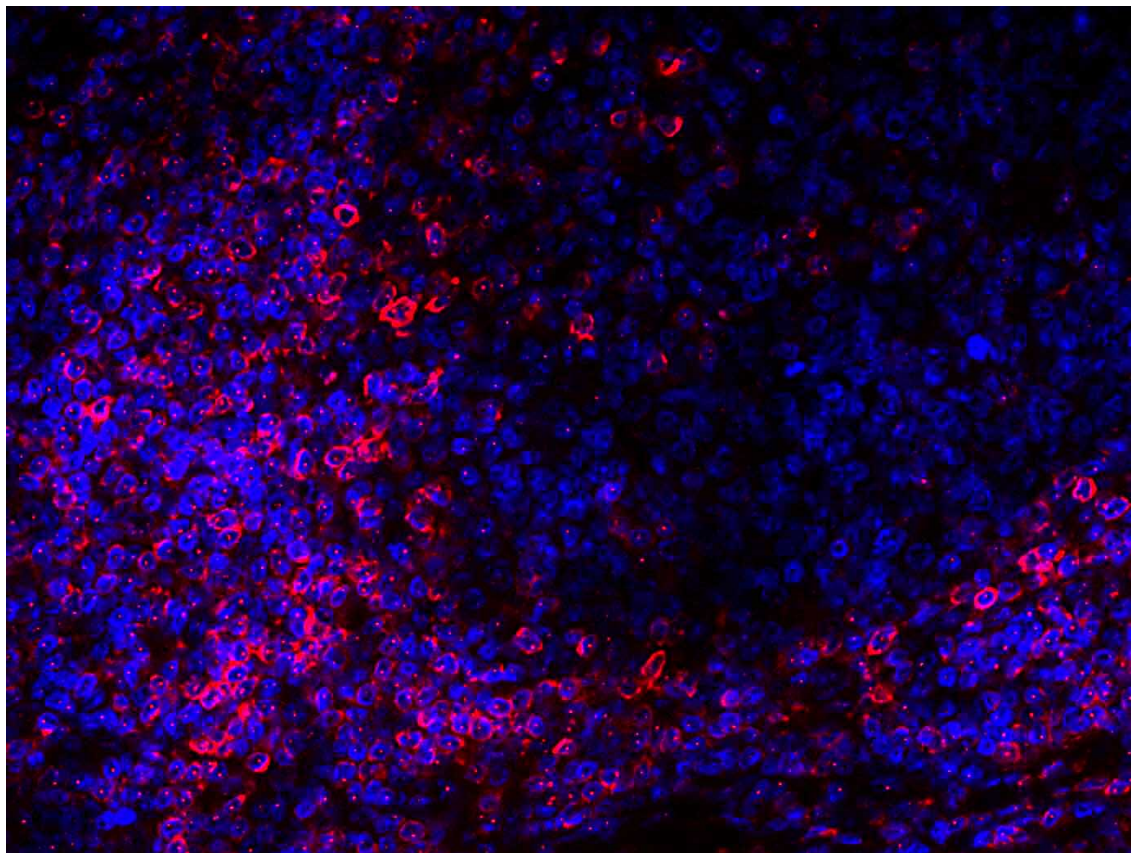


Tonsil

NOR235J mAb can be used to detect BCL2 protein in human frozen tissues



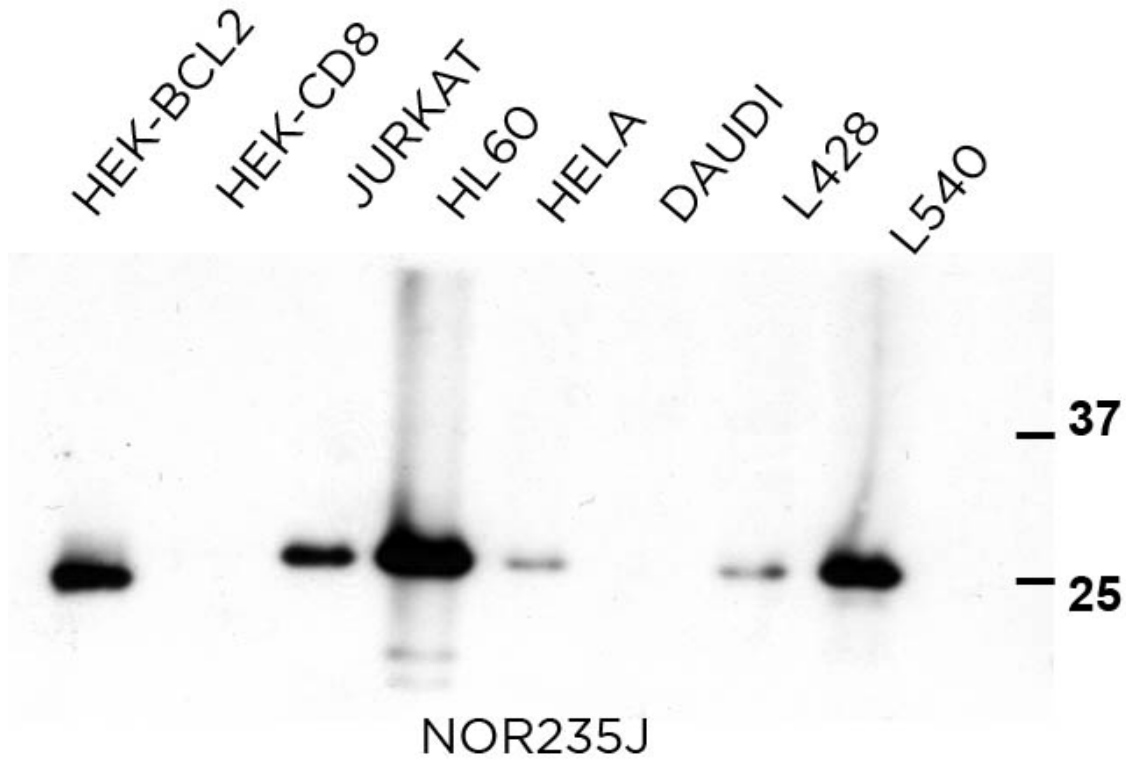
NOR235J mAb can be used to detect BCL2 protein in human paraffin tissues



NOR235J mAb can be used to detect BCL2 in immunofluorescence.

BCL2 (red) and DAPI (blue)

WB Techniques	Clone	Dilution	Antibody concentration	Positive control	Negative control	Expected MW	Observed Mw	Positivity in other species
Western Blotting								
Recommended	NOR235J	Neat	supernatant	HL60 cell line	DAUDI cell line	25kDa	25kDa	
Immunoprecipitation								
Recommended	NOR235J	40ul/IP	supernatant	HL60 cell line	DAUDI cell line	25kDa	25kDa	



NOR235J mAb is able to detect human BCL2 protein by WB.

LANES

Lane 1 Hek-BCL2 (30ug) (+)

Lane 2 Hek-CD8 (30ug) (-)

Lane 3 Jurkat cell line (100ug) (+)

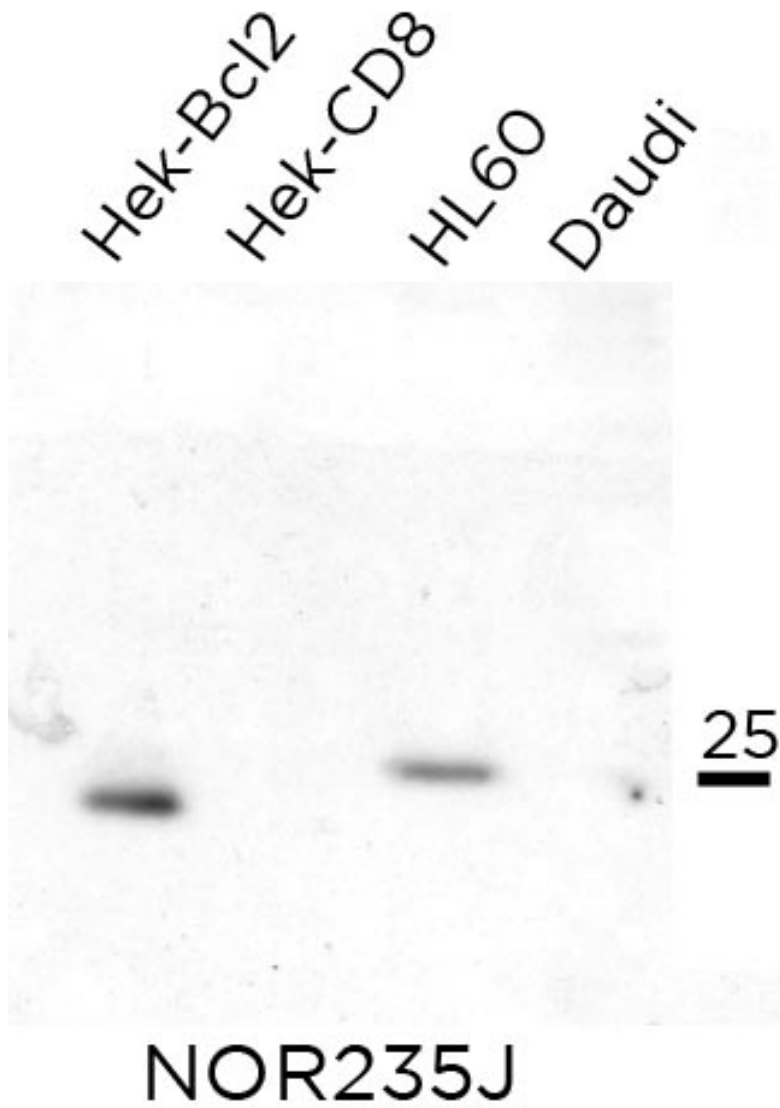
Lane 4 HL60 cell line (100ug) (+)

Lane 5 Hela cell line (100ug) (+)

Lane 6 Daudi cell line (100ug) (-)

Lane 7 L428 cell line (100ug) (+)

Lane 8 L540 cell line (100ug) (+)



NOR235J mAb can be used to immunoprecipitate BCL2 protein

Immunoprecipitation of protein extracts from HEK-Bcl2, HEK-CD8, HL60 and Daudi with anti-BCL2 mAb (clone NOR235J) (40ul antibody/IP) followed by western blotting with NOR235J.