

CD138

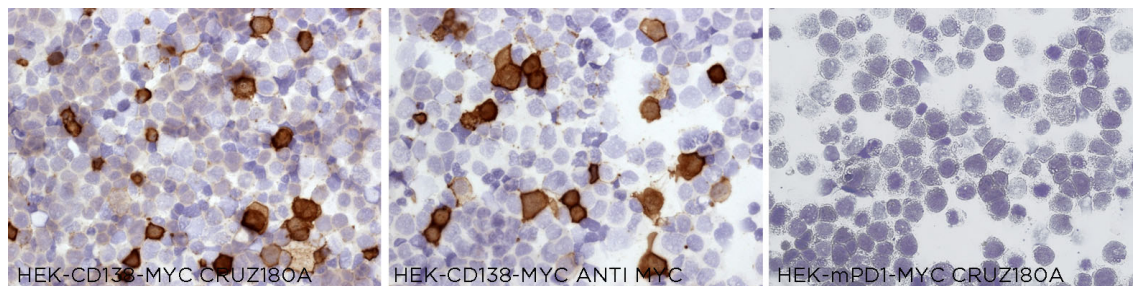
CONTACT INFORMATION:	Monoclonal Antibodies Unit. Centro Nacional de Investigaciones Oncológicas
STATUS:	Validated
TYPE:	mouse monoclonal
CLONE NAME:	CRUZ180A
PROTEIN:	Syndecan 1, CD138 antigen, Heparan sulfate proteoglycan fibroblast growth factor receptor
PROTEIN WEB:	https://www.uniprot.org/uniprot/P18827
ANTIGEN USED:	300.19 mouse pre-B cell line transfected with human CD138 antigen
FUSION PARTNER:	NS1/Ag4-1 (NS1) cells
ISOTYPE:	IgG1
SPECIES REACTIVITY:	Human
PREPARATION AND STORAGE:	Aliquot and store at 4C. Do not freeze

DESCRIPTION

Cell surface proteoglycan that bears both heparan sulfate and chondroitin sulfate and that links the cytoskeleton to the interstitial matrix. Regulates exosome biogenesis in concert with SDCBP and PDCD6IP.

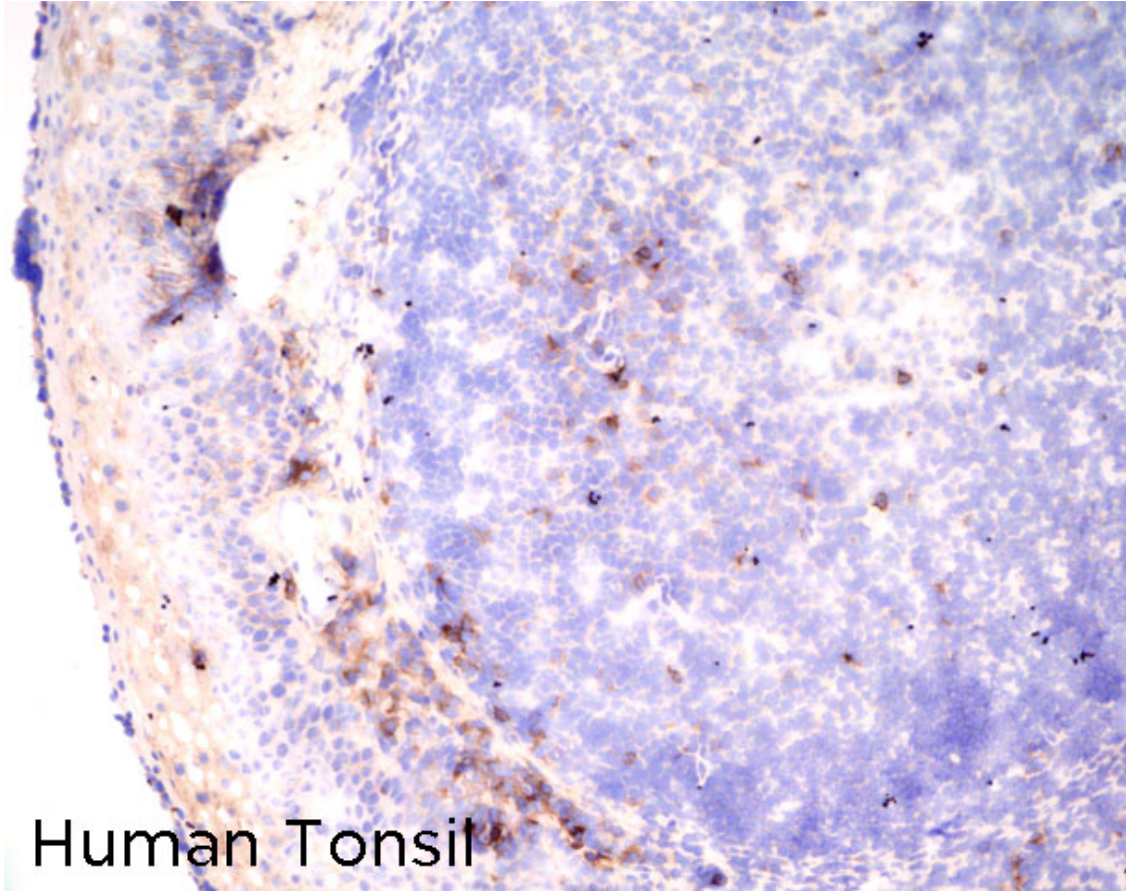
APPLICATIONS

IHC Techniques	Clone	Dilution	Antibody concentration	Antigen retrieval method	Visualization kit	Positive control	Negative control	Protein localization	Positivity in other species
Frozen tissue and cytopins									
Recommended	CRUZ 180A	Neat	supernatant						
Paraffin tissue									
Recommended	CRUZ 180A	1:100	supernatant	Citrate	Novolink	Tonsil	Kidney	membrane	
Immunofluorescence									



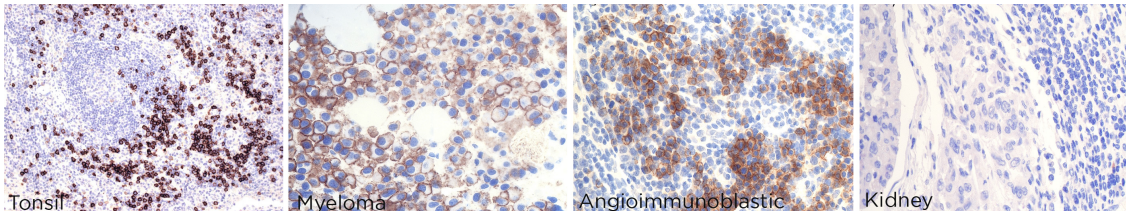
CRUZ180A mAb is able to detect human CD138 protein in immunocytochemistry

To confirm that CRUZ180A mAb recognizes human CD138 protein, immunocytochemistry on frozen cytospin preparations of MYC-tagged CD138 in HEK293 was performed. Anti-MYC antibody was used as positive control. Cytospin preparation of mouse PD1 protein was used as a negative control.



Human Tonsil

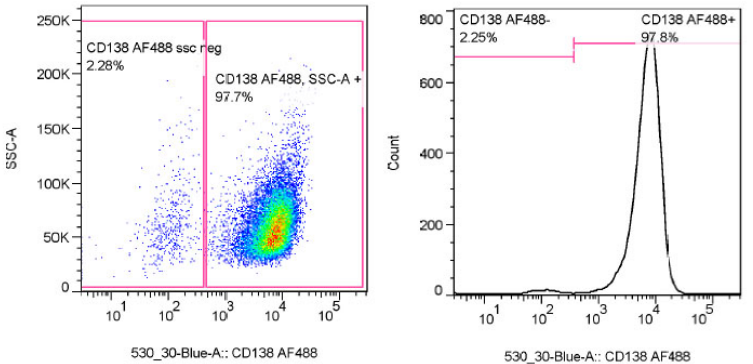
CRUZ180A mAb can be used to detect CD138 protein in human frozen tissues.



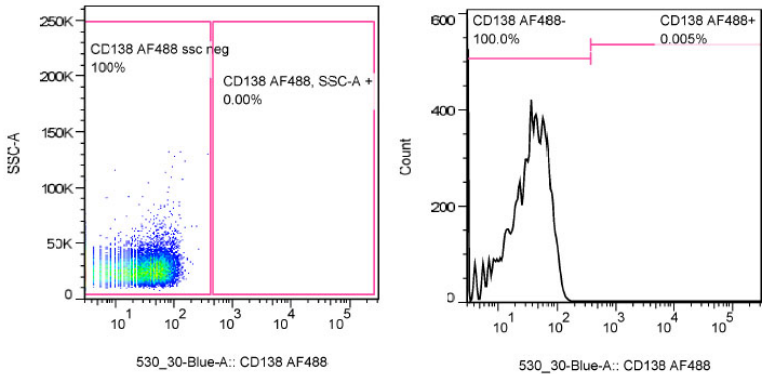
CRUZ180A mAb can be used to detect CD138 protein in human paraffin tissues.

FLOW CYTOMETRY	Clone	Dilution	Positive control	Negative control	Type of fluorocrom
Recommended	CRUZ180A				

OPM2 cell line



MHH-PREB-1 cell line



CRUZ180A mAb can be used to detect CD138 in immunofluorescence.