

E4F1

CONTACT INFORMATION:	Monoclonal Antibodies Unit. Centro Nacional de Investigaciones Oncológicas
STATUS:	Validated
TYPE:	mouse monoclonal
CLONE NAME:	272G
PROTEIN:	Transcription factor E4F1
PROTEIN WEB:	https://www.uniprot.org/uniprot/Q66K89
ANTIGEN USED:	GST-E4F1 recombinant protein
FUSION PARTNER:	NS1/Ag4-1 (NS1) cells
ISOTYPE:	IgG1
SPECIES REACTIVITY:	Human
PREPARATION AND STORAGE:	Aliquot and store at 4C. Do not freeze

DESCRIPTION

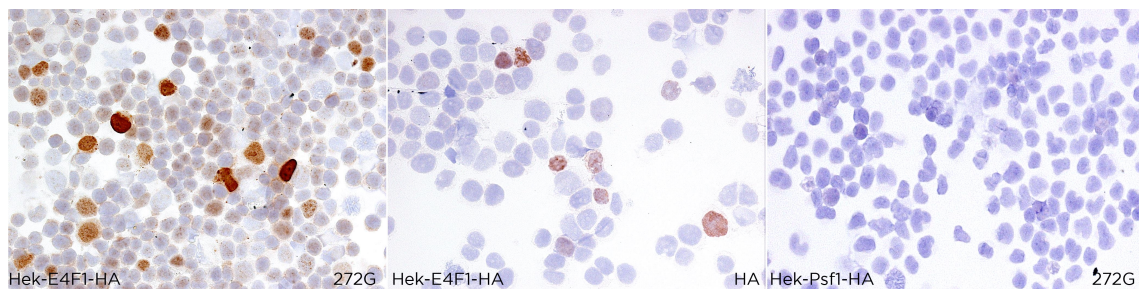
May function as a transcriptional repressor. May also function as a ubiquitin ligase mediating ubiquitination of chromatin-associated TP53. Functions in cell survival and proliferation through control of the cell cycle. Functions in the p53 and pRB tumor suppressor pathways and regulates the cyclin CCNA2 transcription.

Identified as a cellular target of the adenoviral oncoprotein E1A, it is required for both transcriptional activation and repression of viral genes.

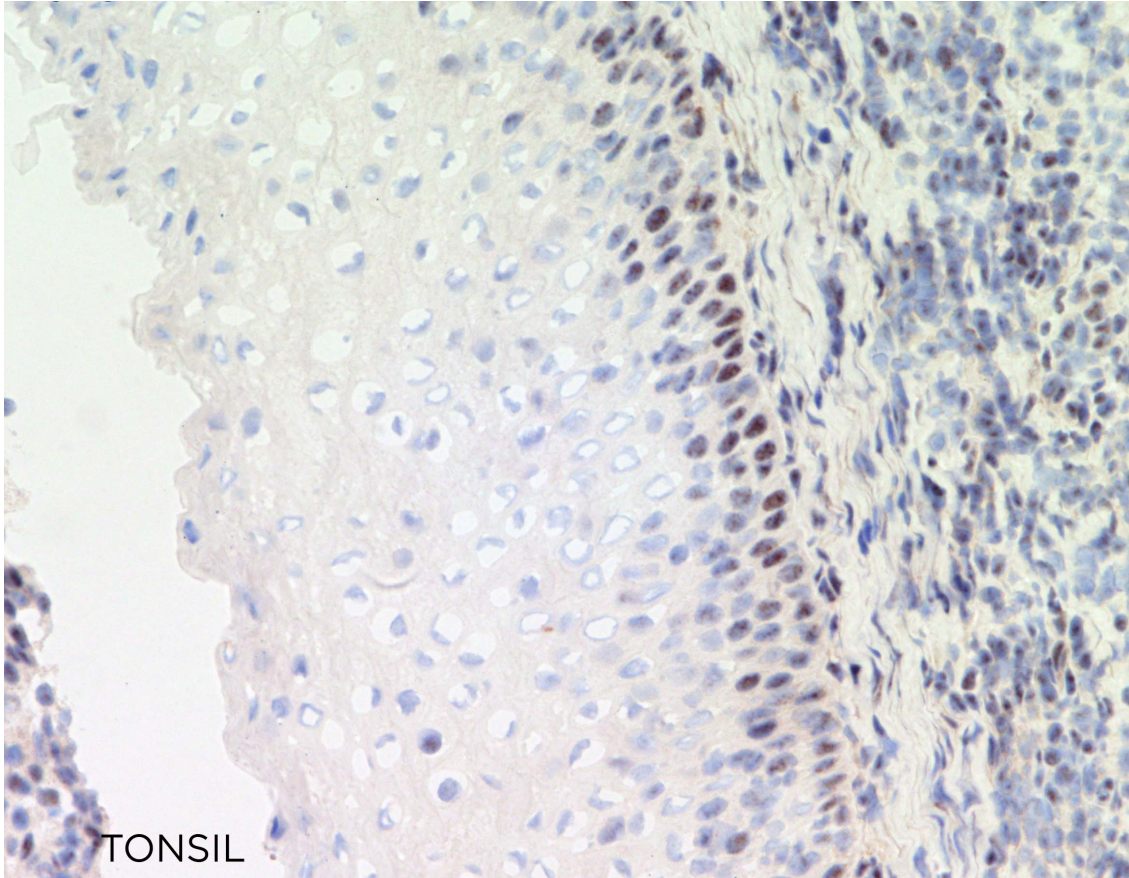
APPLICATIONS

IHC Techniques	Clone	Dilution	Antibody concentration	Antigen retrieval method	Visualization kit	Positive control	Negative control	Protein localization	Positivity in other species
Frozen tissue and cytopspins									
Recommended	272G	Neat	supernatant						
Paraffin tissue									
Recommended	272G	1:15	supernatant	Tris-EDTA	Novolink	Thymus		nuclear	

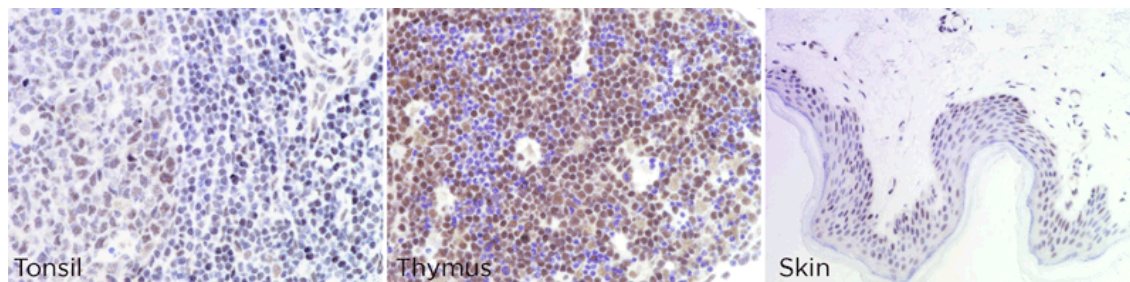
Immunofluorescence

**272G mAb is able to detect human E4F1 protein in immunocytochemistry**

To confirm that 272G mAb recognizes human E4F1 protein, immunocytochemistry on frozen cytospin preparations of HA-tagged E4F1 expressed in HEK293T was performed. Cytospin preparation of Psf1 transfected cells was used as negative control.

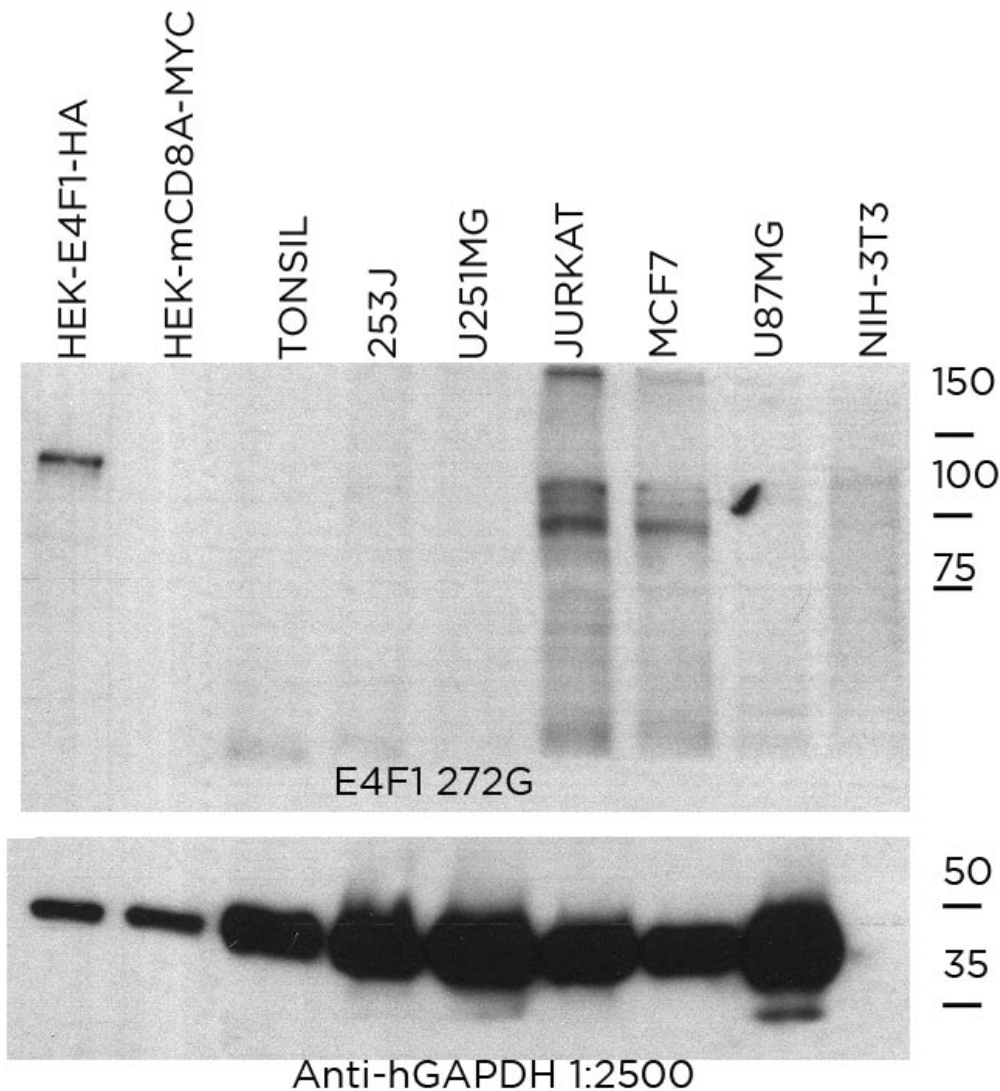


272G mAb can be used to detect E4F1 protein in human frozen tissues.



272G mAb can be used to detect E4F1 protein in human paraffin tissues

WB Techniques	Clone	Dilution	Antibody concentration	Positive control	Negative control	Expected MW	Observed Mw	Positivity in other species
Western Blotting								
Recommended	272G	Neat	supernatant	Jurkat cell line		83kDa	83kDa	
Immunoprecipitation								



272G mAb is able to detect human E4F1 protein by WB.

LANES

Lane 1 HEK-E4F1-HA (10ug) (+)
Lane 2 HEK-mCD8A-MYC (10ug) (-)
Lane 3 Human tonsil (100ug) (-)
Lane 4 253J cell line (100ug) (-)
Lane 5 U251MG cell line (100ug) (-)
Lane 6 Jurkat cell line (100ug) (+)
Lane 7 MCF7 cell line (100ug) (+)
Lane 8 U87MG cell line (100ug) (-)
Lane 9 NIH-3T3 cell line (100ug) (-)

Anti-GAPDH was used as loading control