

TOX2

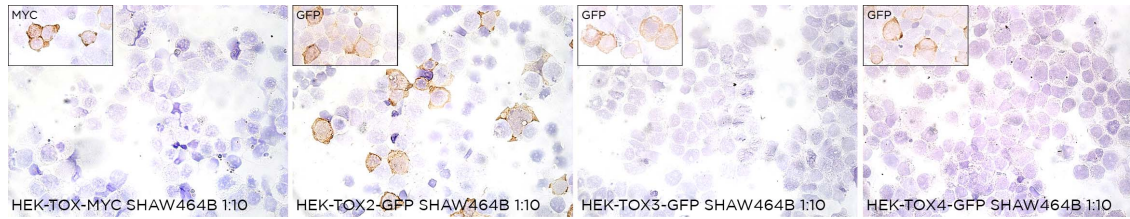
CONTACT INFORMATION: Monoclonal Antibodies Unit. Centro Nacional de Investigaciones Oncológicas
STATUS: Validated
TYPE: Rat monoclonal
CLONE NAME: SHAW464B
PROTEIN: TOX high mobility group box family member 2
PROTEIN WEB: <https://www.uniprot.org/uniprot/Q96NM4>
ANTIGEN USED: hTOX2-HIS (Fragment expressed: 35-120aa)
FUSION PARTNER: NS1/Ag4-1 (NS1) cells
ISOTYPE: IgM
SPECIES REACTIVITY: Human and mouse
PREPARATION AND STORAGE: Aliquot and store at 4C. Do not freeze

DESCRIPTION

Putative transcriptional activator involved in the hypothalamo-pituitary-gonadal system.

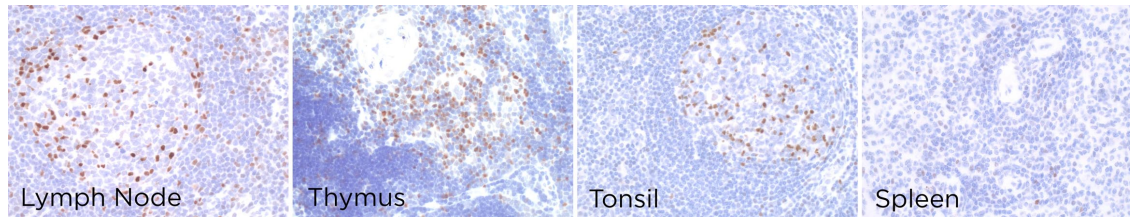
APPLICATIONS

IHC Techniques	Clone	Dilution	Antibody concentration	Antigen retrieval method	Visualization kit	Positive control	Negative control	Protein localization	Positivity in other species
Frozen tissue and cytopins									
Recommended	SHAW 464B	Neat	supernatant						
Paraffin tissue									
Recommended	SHAW 464B	1:30	supernatant	Tris-EDTA	Novolink	Tonsil			
Immunofluorescence									



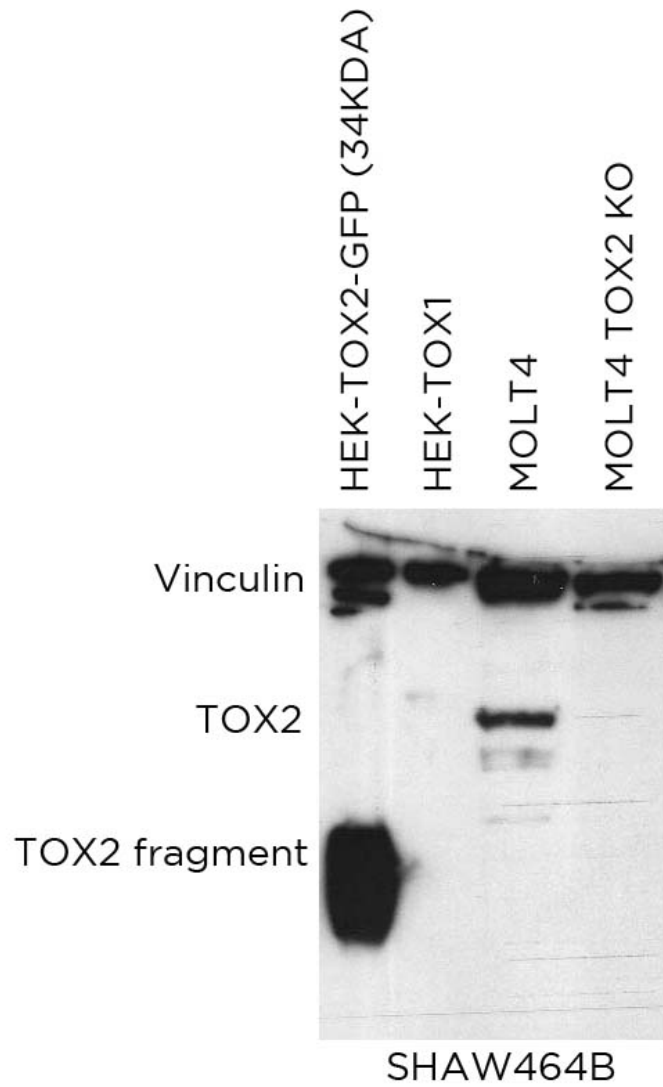
SHAW464B mAb is able to detect human TOX2 protein in immunocytochemistry

To confirm that SHAW464B mAb recognizes human TOX2 protein and it does not cross react with TOX, TOX3 and TOX4 family members, immunocytochemistry on frozen cytopins preparations of human TOX, TOX2, TOX3 and TOX4 expressed in HEK293T was performed. Anti-MYC and anti-GFP Abs were used as a positive control.



SHAW464B antibody can be used to detect TOX2 protein in human paraffin tissues.

WB Techniques	Clone	Dilution	Antibody concentration	Positive control	Negative control	Expected MW	Observed Mw	Positivity in other species
Western Blotting								
Recommended	SHAW464B	Neat	supernatant	MOLT4 cell line		52kDa	52kDa	
Immunoprecipitation								



SHAW464B mAb is able to detect human TOX2 protein by WB.

LANES

Lane 1 HEK-TOX2-GFP (34KDA) (20ug) (+)

Lane 2 HEK-TOX1 (20ug) (-)

Lane 3 MOLT4 cell line (100ug) (+)

Lane 4 MOLT4 TOX2 KO (100ug) (-)