

BCL6

CONTACT INFORMATION:	Monoclonal Antibodies Unit. Centro Nacional de Investigaciones Oncológicas
STATUS:	Validated
TYPE:	mouse anti human
CLONE NAME:	ST42B
PROTEIN:	human full length Bcl-6
PROTEIN WEB:	http://www.hprd.org/summary?hprd_id=00180&isoform_id=00180_3&isoform_name=Isoform_1
ANTIGEN USED:	GST-BCL6 recombinant protein
FUSION PARTNER:	NS1/Ag4-1 (NS1) cells
ISOTYPE:	IgG1
SPECIES REACTIVITY:	Human and mouse
PREPARATION AND STORAGE:	Aliquot and store at 4C. Do not freeze
APP RECOMMENDED:	IHQ-frozen, IHQ-paraffin, WB, IF
APP NO TESTED:	Flow Cytometry, IP

DESCRIPTION

BCL-6 is a transcriptional regulator gene which codes for a 706-amino-acid nuclear zinc finger protein. Antibodies to this protein stain the germinal centre cells in lymphoid follicles, the follicular cells and interfollicular cells in Follicular Lymphoma, Diffuse Large B-Cell Lymphomas, and Burkitt's lymphoma, and the majority of the Reed-Sternberg cells in Nodular Lymphocyte Predominant Hodgkin's Disease. In contrast, anti-BCL-6 rarely stains Mantle Cell Lymphoma and MALT Lymphoma. BCL-6 expression is seen in approximately 45% of CD30+ Anaplastic Large Cell Lymphoma but is consistently absent in other peripheral T-cell lymphomas.

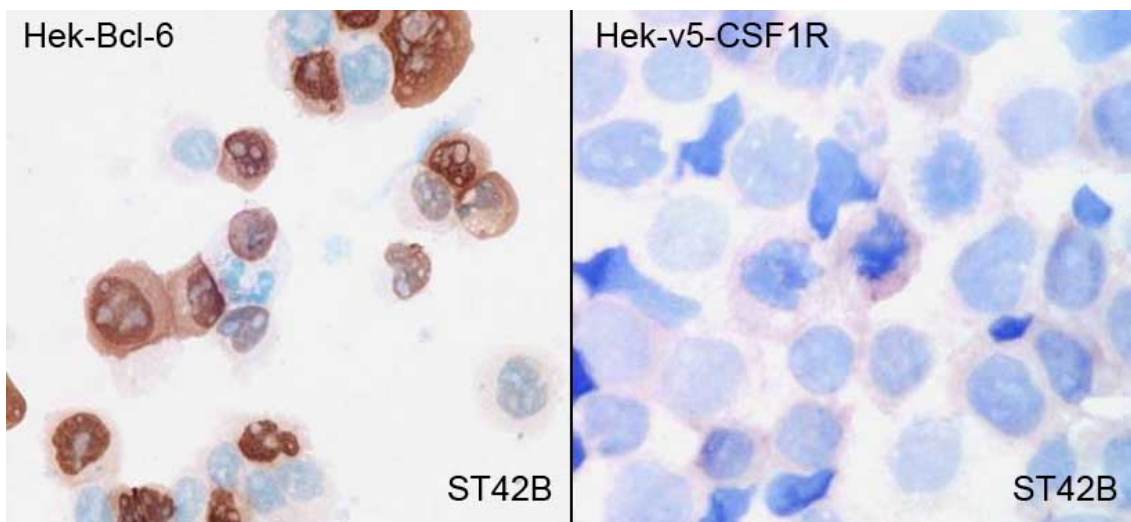
PUBLICATION DESCRIBING ANTIBODY CHARACTERIZATION/VALIDATION

García JF, García JF, Maestre L, Lucas E, Sánchez-Verde L, Romero-Chala S, Piris MA, Roncador G. Genetic Immunization: a New Monoclonal Antibody for the Detection of BCL-6 Protein in Paraffin Sections. J Histochem Cytochem. 2006 54(1):31-8.

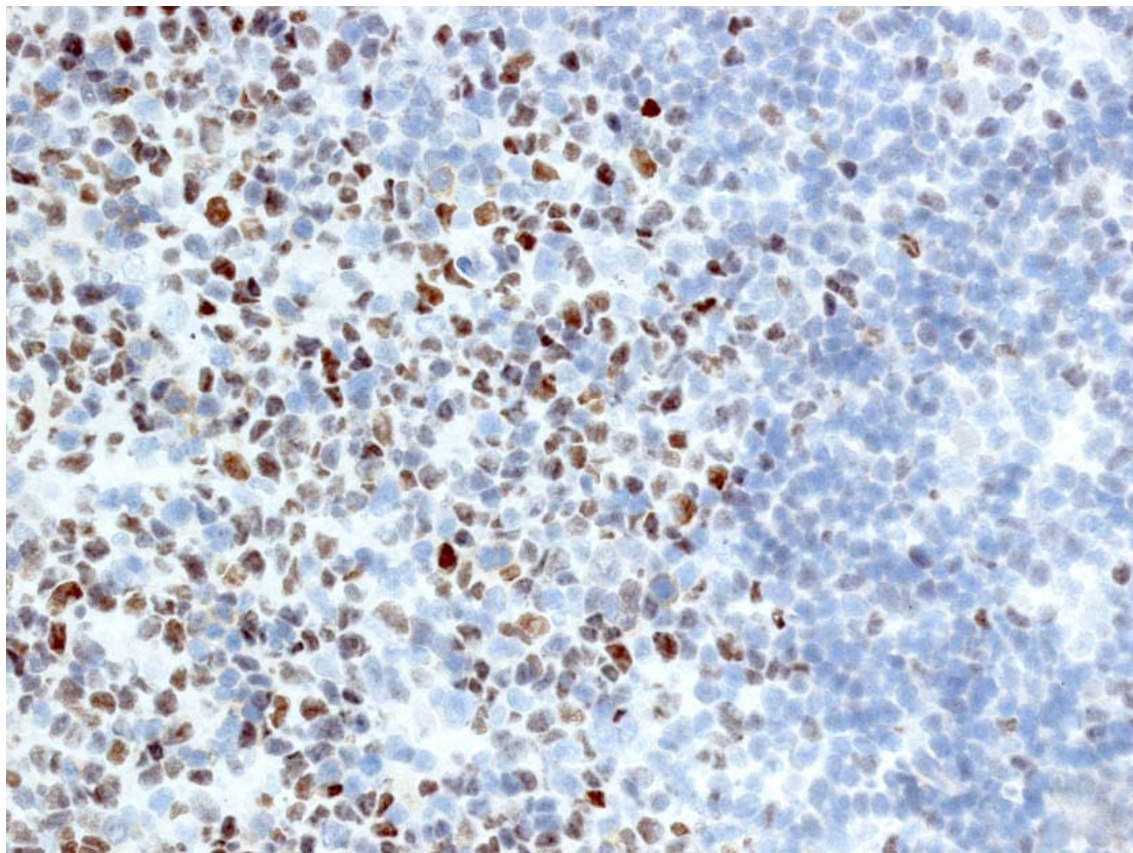
<http://www.ncbi.nlm.nih.gov/pubmed/16046671>

APPLICATIONS

IHC Techniques	Clone	Dilution	Antibody concentration	Antigen retrieval method	Visualization kit	Positive control	Negative control	Protein localization	Positivity in other species
Frozen tissue and cytopins									
Recommended	ST42B	1:4	supernatant	None	goat anti mouse DAKO	Tonsil		nuclear	mouse
Paraffin tissue									
Recommended	ST42B	1:4	supernatant	20 min R2 (Tris-EDTA)	Novolink kit	Tonsil		nuclear	mouse
Immunofluorescence									
Recommended	ST42B	neat	supernatant	Tris-EDTA	goat anti mouse ALEXA	Tonsil		nuclear	mouse

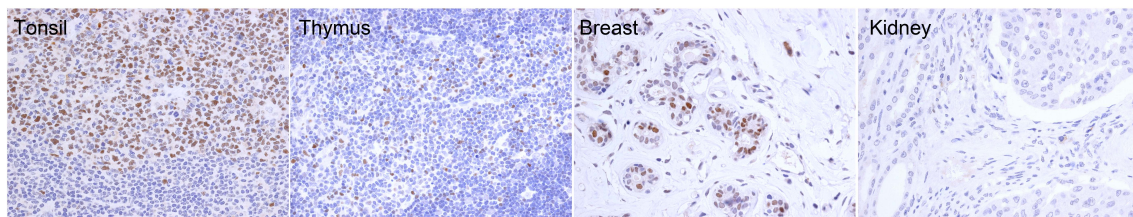
**BCL6 antibody (ST42B) in HEK transfected cells.**

Validation of ST42B monoclonal antibody in transfected cells. Nuclear and cytoplasmic staining on frozen cytopsin preparations of transfected HEK293T-BCL6 cells using antibody ST42B. Hek-v5-CSF1R transfected cells were used as negative control.



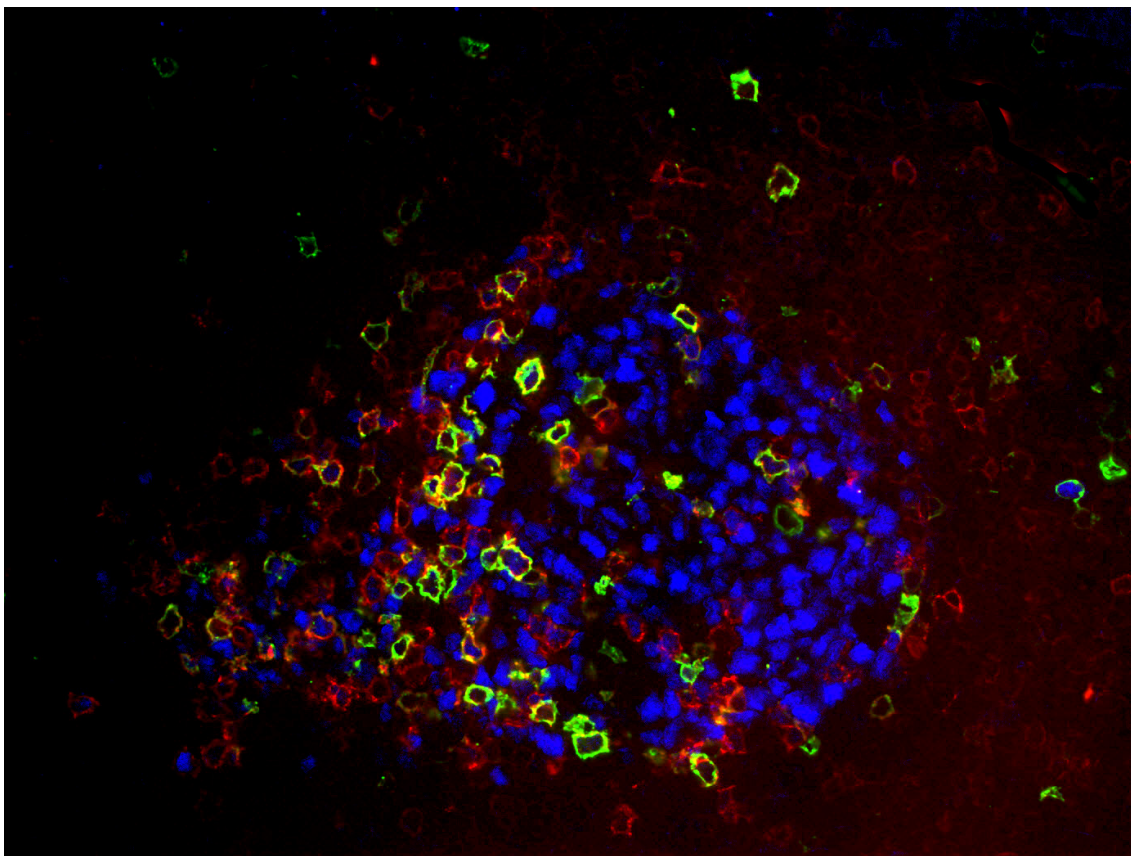
42B mAb staining in human frozen tonsil.

In tonsil, BCL6 protein is strongly expressed by germinal center B cells



ST42B staining in human paraffin sections.

In tonsil, BCL6 protein is strongly expressed by germinal center B cells. Testicle section was used as a negative control.



Triple immunofluorescence staining.

BCL6 (ST42B) nuclear protein in blue, PD-1 membrane staining in red and CD 57 membrane staining in green.

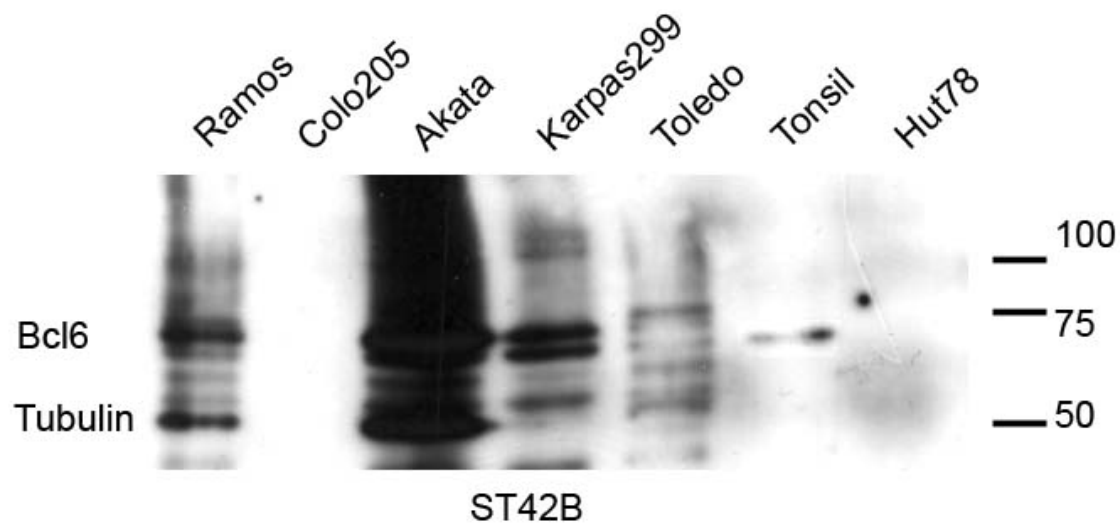
WB Techniques	Clone	Dilution	Antibody concentration	Positive control	Negative control	Expected MW	Observed Mw	Positivity in other species
---------------	-------	----------	------------------------	------------------	------------------	-------------	-------------	-----------------------------

Western Blotting

Recommended	ST42B	neat	supernatant	Tonsil			79kDa	mouse
-------------	-------	------	-------------	--------	--	--	-------	-------

Immunoprecipitation

Not tested								mouse
------------	--	--	--	--	--	--	--	-------

**Western Blotting of BCL6 (ST42B) using different cell extracts.**

WB analysis of cell line samples and human tonsil extract for Bcl-6.

Anti-tubulin was used as loading control.

Lane 1 Ramos cell line (100ug) (+)

Lane 2 Colo205 cell line (100ug) (-)

Lane 3 Akata cell line (100ug) (+)

Lane 4 Karpas 299 cell line (100ug) (+)

Lane 5 Toledo cell line (100ug) (+)

Lane 6 Tonsil (100ug) (+)

Lane 7 Hut78 (100ug) (-)