

BTLA

CONTACT INFORMATION:	Monoclonal Antibodies Unit. Centro Nacional de Investigaciones Oncológicas
STATUS:	Validated
TYPE:	mouse anti human
CLONE NAME:	FLO67B
PROTEIN:	human full length BTLA protein
PROTEIN WEB:	http://www.ncbi.nlm.nih.gov/protein/145580621
ANTIGEN USED:	HIS-BTLA
FUSION PARTNER:	NS1/Ag4-1 (NS1) cells
ISOTYPE:	IgG1
SPECIES REACTIVITY:	human
PREPARATION AND STORAGE:	Aliquot and store at 4C. Do not freeze
APP RECOMMENDED:	IHQ-frozen, IHQ-paraffin, IF
APP NO RECOMMENDED:	WB
APP NO TESTED:	IP, Flow cytometry

DESCRIPTION

B and T lymphocyte attenuator (BTLA) has recently been identified as a new inhibitory receptor of the CD28 superfamily, with similarities to cytotoxic T lymphocyte activation antigen (CTLA)-4 and programmed death (PD)-1. Engagement of BTLA on T lymphocytes can profoundly reduce the T cell receptor (TCR)-mediated activation.

APPLICATIONS

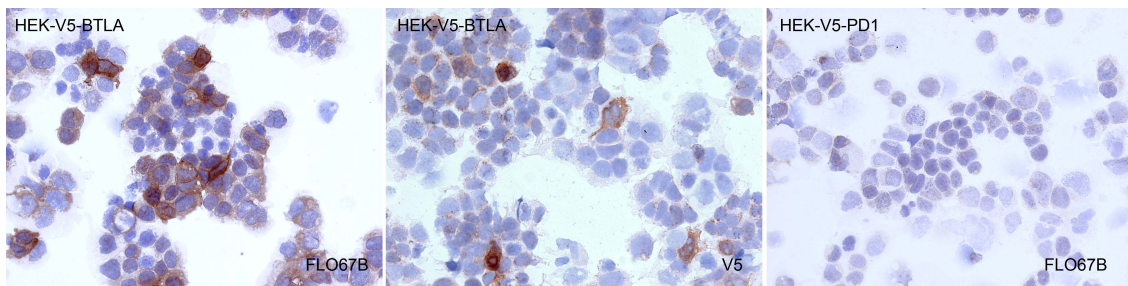
IHC Techniques	Clone	Dilution	Antibody concentration	Antigen retrieval method	Visualization kit	Positive control	Negative control	Protein localization	Positivity in other species
Frozen tissue and cytopspins									
Recommended	FLO67 B	1:5	supernatant			Tonsil		Cytoplasmic	

Paraffin tissue

Recommended	FLO67 B	1:50	supernatant	20min ER2 (Tris-EDTA)	Novolink kit	Tonsil	Kidney	Cytoplasmic	
-------------	------------	------	-------------	-----------------------	--------------	--------	--------	-------------	--

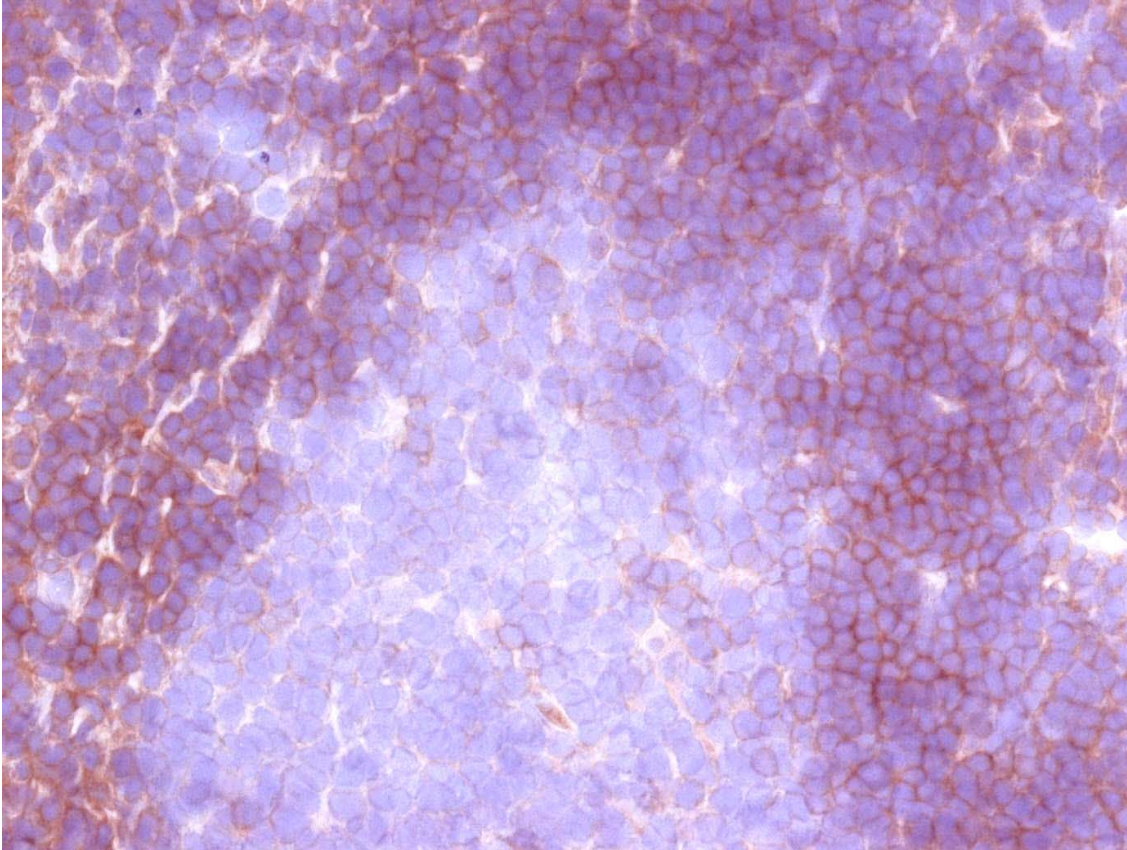
Immunofluorescence

Recommended	FLO67 B	neat	supernatant			Tonsil		Cytoplasmic	
-------------	------------	------	-------------	--	--	--------	--	-------------	--

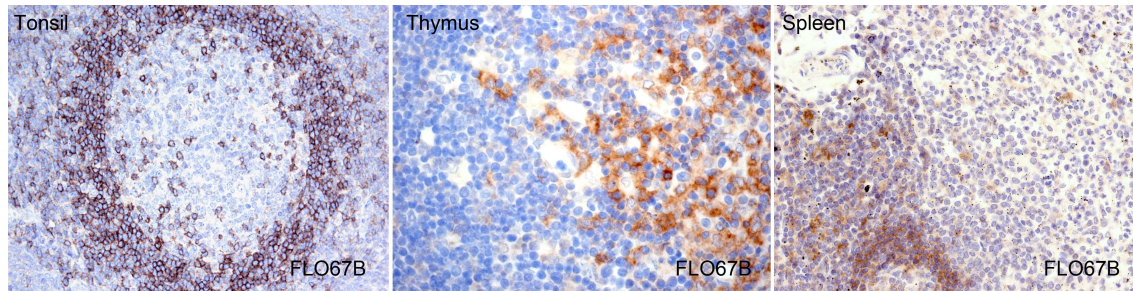


BTLA antibody (FLO67B) in transfected cells

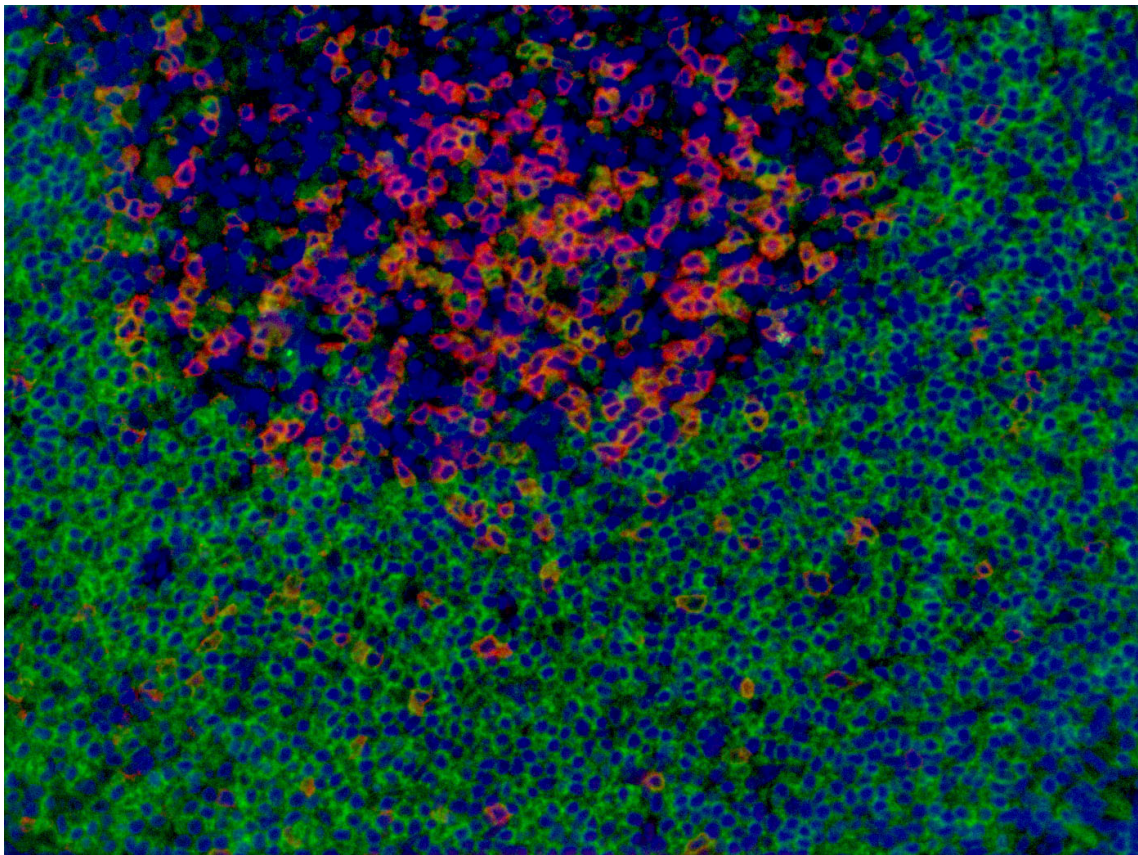
Cytoplasmic staining of BTLA mAb in transfected HEK-V5-BTLA cells. Anti-V5 mAb was used as positive control. HEK-V5-B-MYB transfected cells were used as a negative control.



BTLA expression on human frozen tonsil.

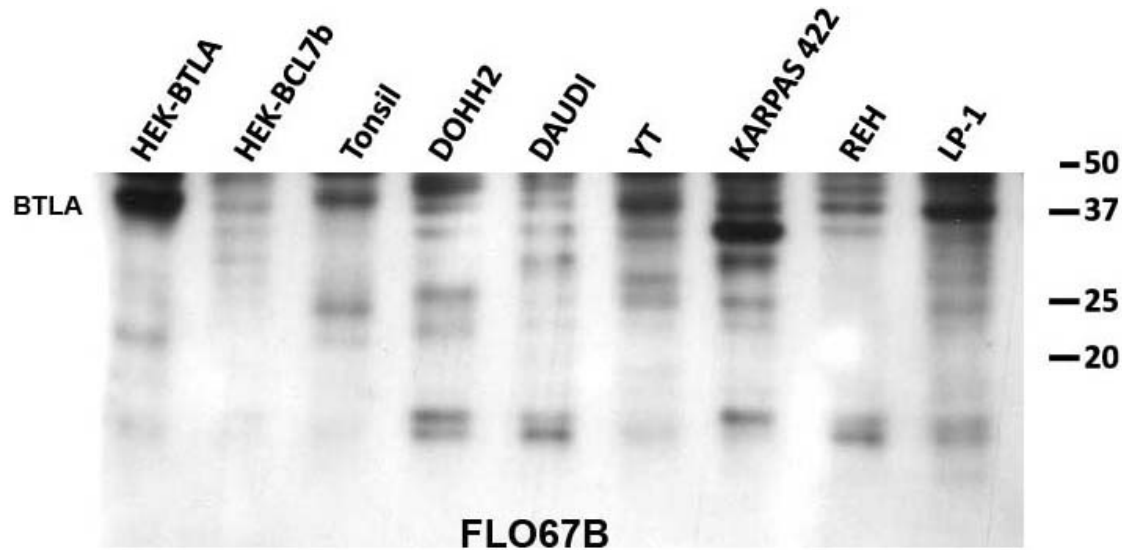


FLO67B staining in human paraffin tissues.



BTLA (FLO67B) immunofluorescence in human paraffin tonsil.
Anti-BTLA (FLO67B) is represented in green. anti-PD1 is represented in red. DAPI in blue.

WB Techniques	Clone	Dilution	Antibody concentration	Positive control	Negative control	Expected MW	Observed Mw	Positivity in other species
Western Blotting								
Not recommended	FLO67B	neat	supernatant					
Immunoprecipitation								



Anti-BTLA (FLO67B) antibody in Western Blotting

FLO67B antibody is not working well by WB. The MW observed is around 35kDa. The antibody is not validated for WB since the results obtained are not reproducible at the moment.

- Lane 1 Hek-BTLA (30ug)
- Lane 2 Hek-Bcl7b (30ug)
- Lane 3 Tonsil (100ug)
- Lane 4 DOHH2 cell line (100ug)
- Lane 5 Daudi cell line (100ug)
- Lane 6 YT cell line (100ug)
- Lane 7 Karpas 422 cell line (100ug)
- Lane 8 REH cell line (100ug)
- Lane 9 LP1 cell line (100ug)