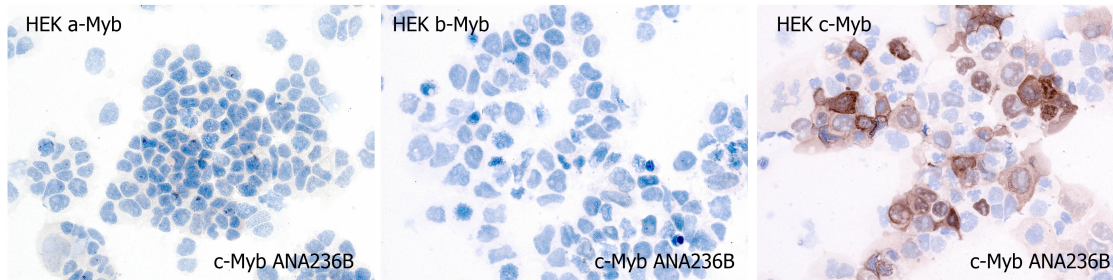


C-Myb

CONTACT INFORMATION: Monoclonal Antibodies Unit. Centro Nacional de Investigaciones Oncológicas
STATUS: Validated
TYPE: rat anti human
CLONE NAME: ANA236
PROTEIN: Homo sapiens v-myb myeloblastosis viral oncogene homologue avian, c-myb
PROTEIN WEB: http://www.hprd.org/summary?hprd_id=01810&isoform_id=01810_3&isoform_name=Isoform_1
ANTIGEN USED: HIS-c-Myb (aa402-aa640 fragment)
FUSION PARTNER: NS1/Ag4-1 (NS1) cells
ISOTYPE: IgG2a
SPECIES REACTIVITY: human
PREPARATION AND STORAGE: Aliquot and store at 4C. Do not freeze

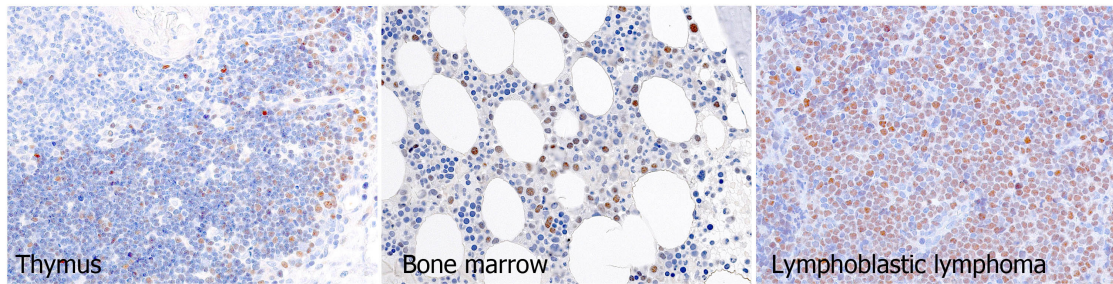
APPLICATIONS

IHC Techniques	Clone	Dilution	Antibody concentration	Antigen retrieval method	Visualization kit	Positive control	Negative control	Protein localization	Positivity in other species
Frozen tissue and cytopins									
Paraffin tissue									
Recommended	ANA236	1:80	purified			Bone marrow			
Immunofluorescence									



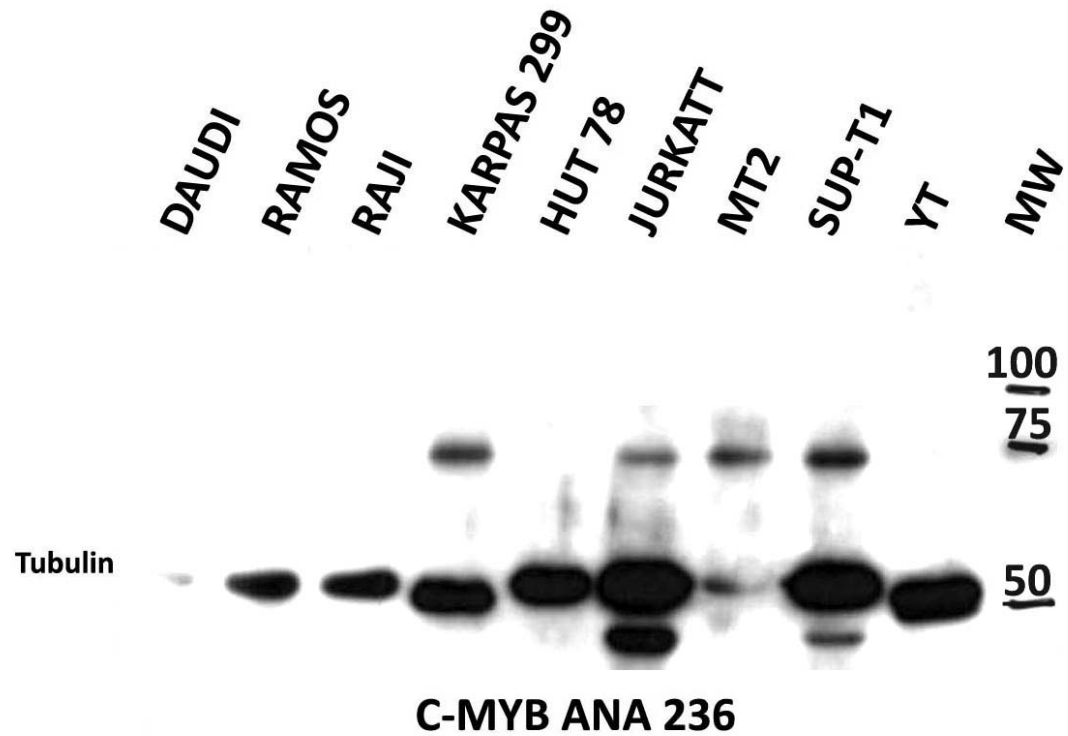
Validation of ANA236B monoclonal antibody in transfected cells

Nuclear and cytoplasmic staining on frozen cytospin preparations of transfected HEK293T-C-myb cells using antibody ANA236B. HEK-A-myb and HEK-B-myb transfected cells were used as negative control.



ANA236B staining in human paraffin sections

WB Techniques	Clone	Dilution	Antibody concentration	Positive control	Negative control	Expected MW	Observed Mw	Positivity in other species
Western Blotting								
Recommended	ANA236	1:50	PURIFIED	Jurkat	YT	72kDa	72kDa	
Immunoprecipitation								



Western Blotting of C-MYB (ANA236) using different human cell lines.

- Lane 1 DAUDI (150 ug) (-)
- Lane 2 RAMOS (150 ug) (-)
- Lane 3 RAJI (150 ug) (-)
- Lane 4 KARPAS299 (150 ug) (+)
- Lane 5 HUT78 (150 ug) (-)
- Lane 6 JURKATT (150 ug) (+)
- Lane 7 MT2 (150 ug) (+)
- Lane 8 SUP-T1 (150 ug) (+)
- Lane 9 YT (150 ug) (-)

Lane 10 Molecular Weight