

BCL6

CONTACT INFORMATION:	Monoclonal Antibodies Unit. Centro Nacional de Investigaciones Oncológicas
STATUS:	Validated
TYPE:	mouse anti mouse
CLONE NAME:	ST42B
PROTEIN:	human full length Bcl-6
PROTEIN WEB:	http://www.hprd.org/summary?hprd_id=00180&isoform_id=00180_3&isoform_name=Isoform_1
ANTIGEN USED:	GST-BCL6 recombinant protein
FUSION PARTNER:	NS1/Ag4-1 (NS1) cells
ISOTYPE:	IgG1
SPECIES REACTIVITY:	Human and mouse
PREPARATION AND STORAGE:	Aliquot and store at 4C. Do not freeze
APP RECOMMENDED:	IHQ-frozen, IHQ-paraffin, WB, IF
APP NO TESTED:	Flow Cytometry, IP

DESCRIPTION

BCL-6 is a transcriptional regulator gene which codes for a 706-amino-acid nuclear zinc finger protein. Antibodies to this protein stain the germinal centre cells in lymphoid follicles, the follicular cells and interfollicular cells in Follicular Lymphoma, Diffuse Large B-Cell Lymphomas, and Burkitt's lymphoma, and the majority of the Reed-Sternberg cells in Nodular Lymphocyte Predominant Hodgkin's Disease. In contrast, anti-BCL-6 rarely stains Mantle Cell Lymphoma and MALT Lymphoma. BCL-6 expression is seen in approximately 45% of CD30+ Anaplastic Large Cell Lymphoma but is consistently absent in other peripheral T-cell lymphomas.

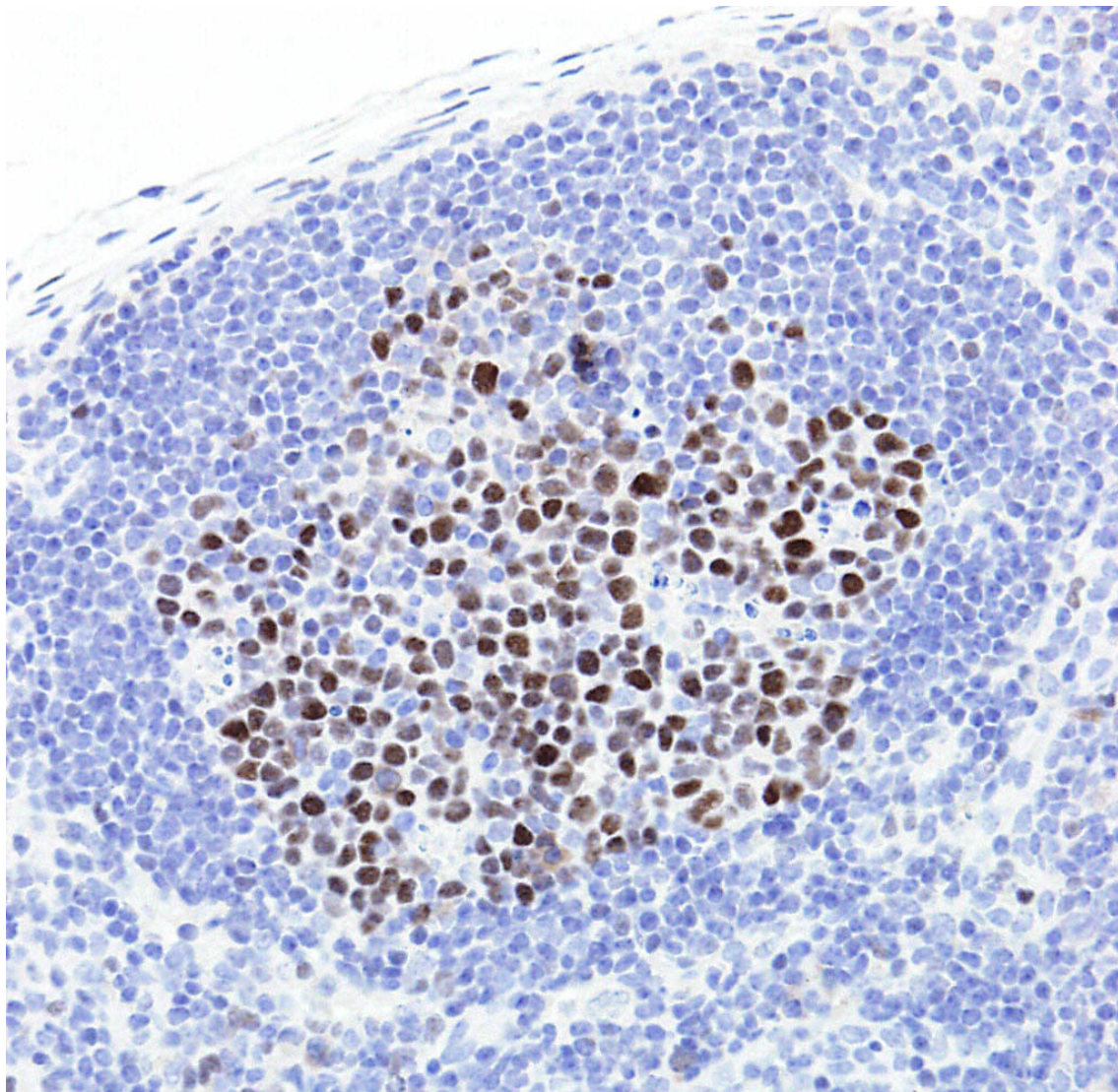
PUBLICATION DESCRIBING ANTIBODY CHARACTERIZATION/VALIDATION

García JF, García JF, Maestre L, Lucas E, Sánchez-Verde L, Romero-Chala S, Piris MA, Roncador G. Genetic Immunization: a New Monoclonal Antibody for the Detection of BCL-6 Protein in Paraffin Sections. *J Histochem Cytochem.* 2006 54(1):31-8.

<http://www.ncbi.nlm.nih.gov/pubmed/16046671>

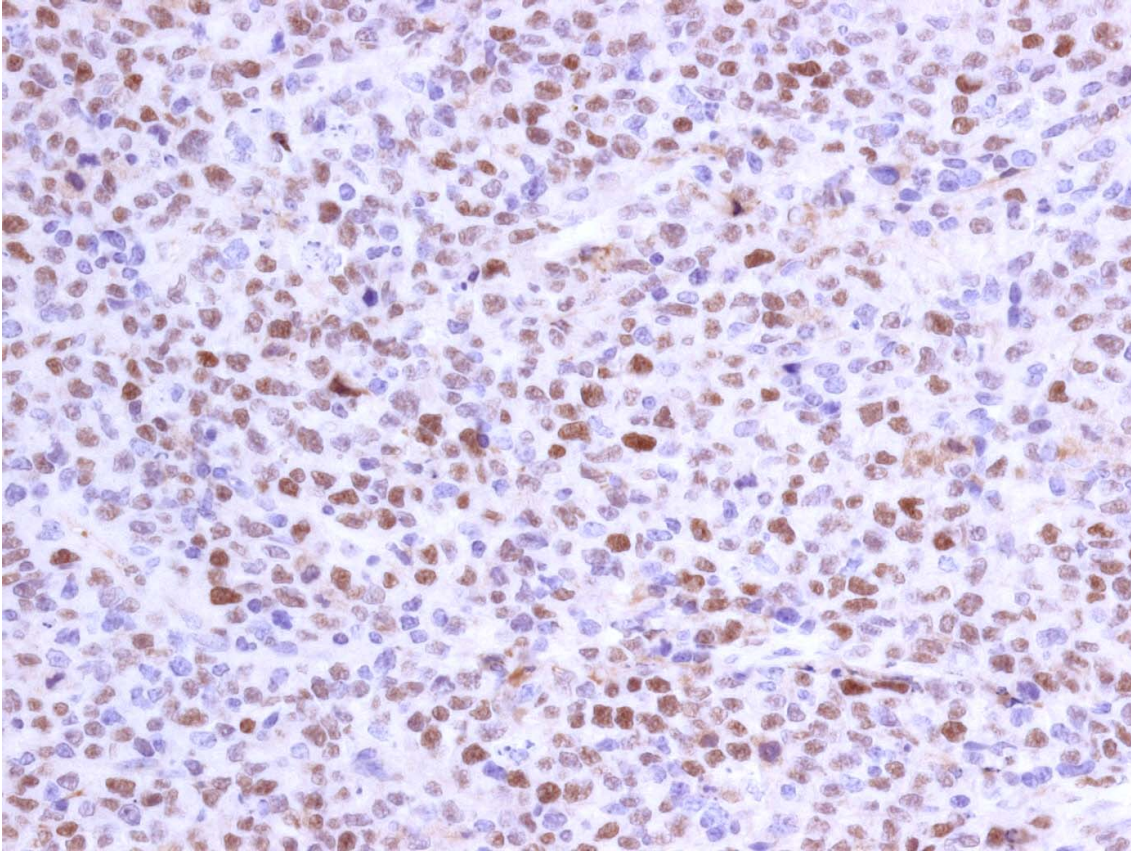
APPLICATIONS

IHC Techniques	Clone	Dilution	Antibody concentration	Antigen retrieval method	Visualization kit	Positive control	Negative control	Protein localization	Positivity in other species
Frozen tissue and cytopspins									
Paraffin tissue									
Recommended	ST42B	1:30	purified	Discovery Xt CC1 OmniMap	Ventana	lymph node		nuclear	human
Immunofluorescence									



42B mAb staining in mouse lymph node

In lymph node, BCL6 protein is strongly expressed by B cells.



ST42B expression in one mouse lymphoma paraffin section.