

BCL6

CONTACT INFORMATION:	Monoclonal Antibodies Unit. Centro Nacional de Investigaciones Oncológicas
STATUS:	Validated
TYPE:	mouse anti mouse
CLONE NAME:	GI191E
PROTEIN:	human full length BCL6
PROTEIN WEB:	http://www.hprd.org/summary?hprd_id=00180&isoform_id=00180_3&isoform_name=Isoform_1
ANTIGEN USED:	pcDNA3-BCL6
FUSION PARTNER:	NS1/Ag4-1 (NS1) cells
ISOTYPE:	IgG1
SPECIES REACTIVITY:	human and mouse
PREPARATION AND STORAGE:	Aliquot and store at 4C. Do not freeze
APP RECOMMENDED:	WB, IHC-frozen, IHC-paraffin
APP NO TESTED:	IP, IF, Flow Cytometry

DESCRIPTION

BCL-6 is a transcriptional regulator gene which codes for a 706-amino-acid nuclear zinc finger protein. Antibodies to this protein stain the germinal centre cells in lymphoid follicles, the follicular cells and interfollicular cells in Follicular Lymphoma, Diffuse Large B-Cell Lymphomas, and Burkitt's lymphoma, and the majority of the Reed-Sternberg cells in Nodular Lymphocyte Predominant Hodgkin's Disease. In contrast, anti-BCL-6 rarely stains Mantle Cell Lymphoma and MALT Lymphoma. BCL-6 expression is seen in approximately 45% of CD30+ Anaplastic Large Cell Lymphoma but is consistently absent in other peripheral T-cell lymphomas.

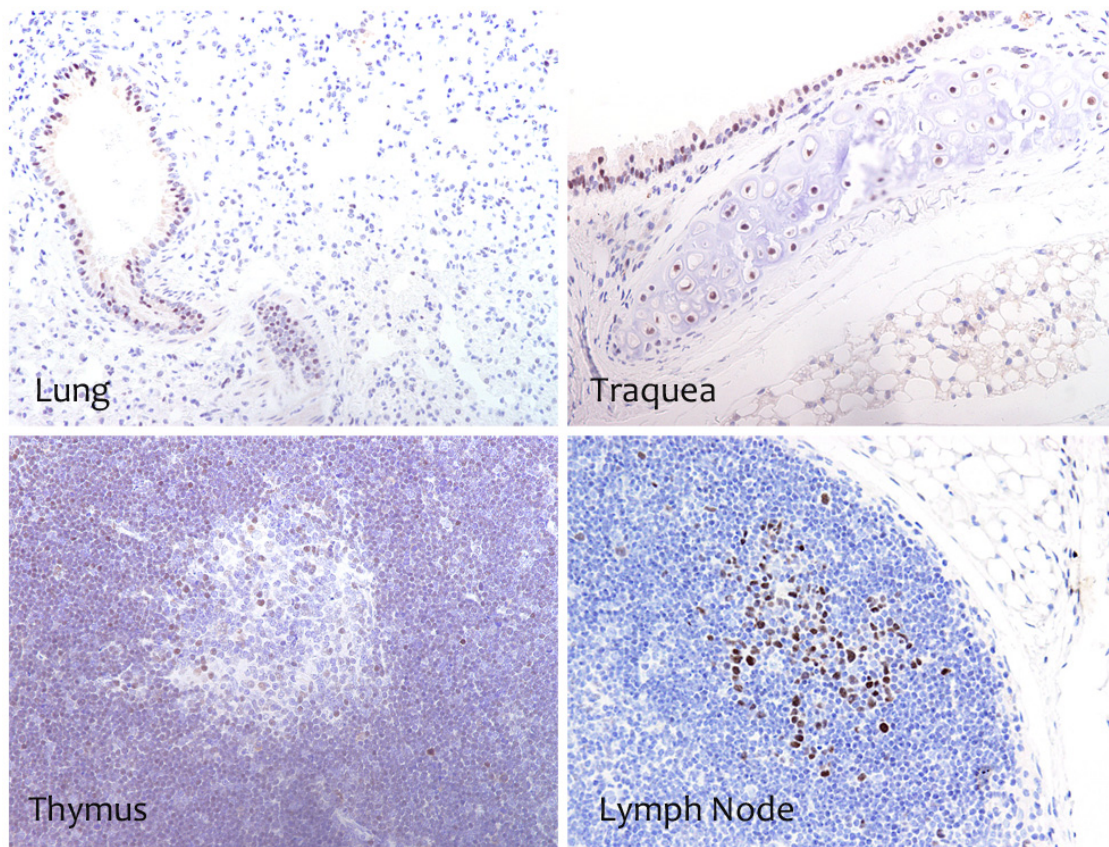
PUBLICATION DESCRIBING ANTIBODY CHARACTERIZATION/VALIDATION

García JF, García JF, Maestre L, Lucas E, Sánchez-Verde L, Romero-Chala S, Piris MA, Roncador G. Genetic Immunization: a New Monoclonal Antibody for the Detection of BCL-6 Protein in Paraffin Sections. J Histochem Cytochem. 2006 54(1):31-8.

<http://www.ncbi.nlm.nih.gov/pubmed/16046671>

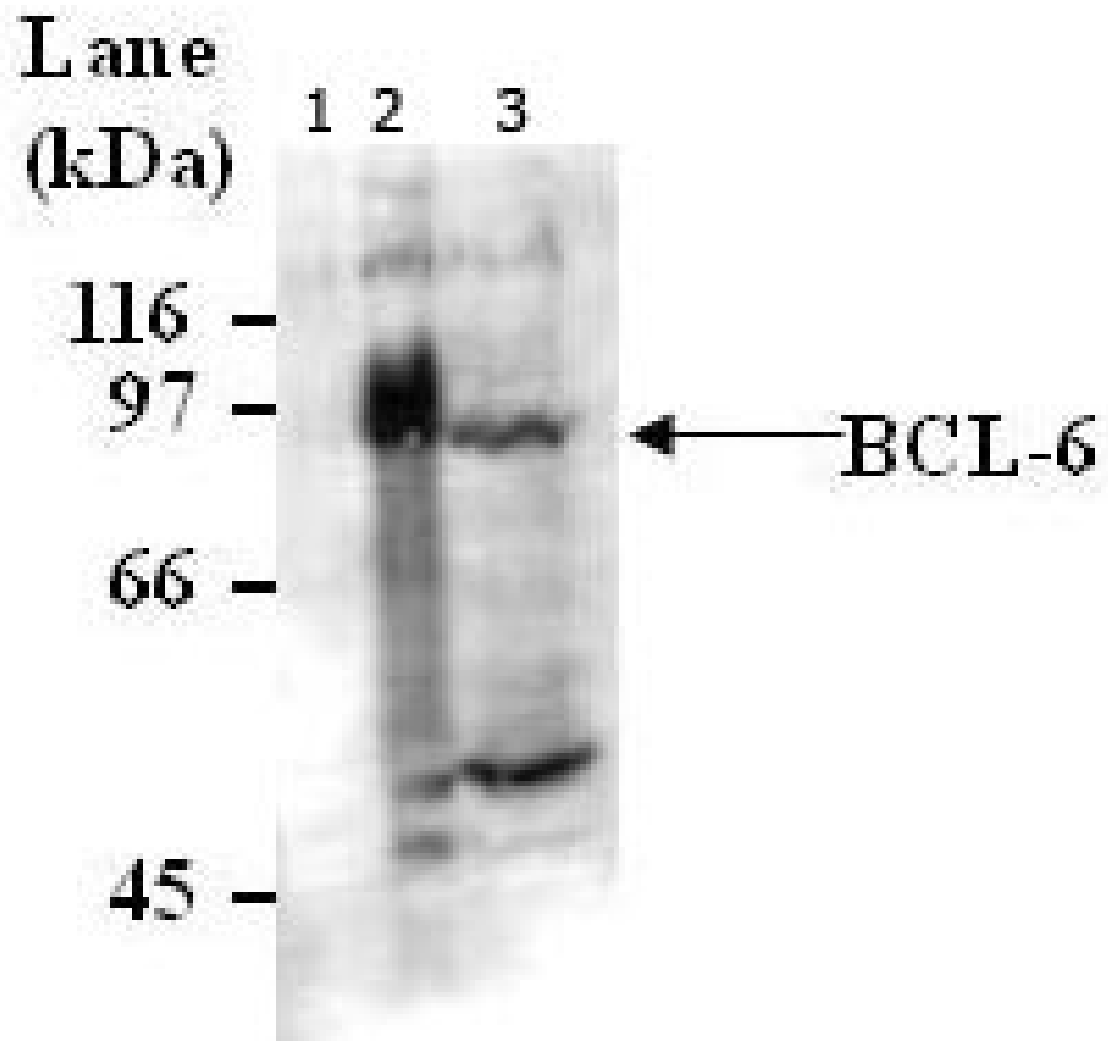
APPLICATIONS

IHC Techniques	Clone	Dilution	Antibody concentration	Antigen retrieval method	Visualization kit	Positive control	Negative control	Protein localization	Positivity in other species
Frozen tissue and cytopins									
Paraffin tissue									
Recommended	GI191 E	neat	supernatant	Discovery Xt CC1 OmniMap	Ventana	Lymph node		nuclear	human
Immunofluorescence									



MAb IG191E in mouse tissue

WB Techniques	Clone	Dilution	Antibody concentration	Positive control	Negative control	Expected MW	Observed Mw	Positivity in other species
Western Blotting								
Recommended	GI191E	supernatant	1:20	WR19L cell line	Ba/F3 cell line	78kDa	80kDa	human
Immunoprecipitation								



Western Blotting of BCL6 (GI191E)

Western Blotting of BCL6 (GI191E) using different mouse and rat cell lines.

Lane 1 Ba/F3 mouse cell line (10ug) (-)

Lane 2 WR19L mouse cell line (50ug) (+)

Lane 3 PC12 rat cell line (50ug) (+)