

## EED

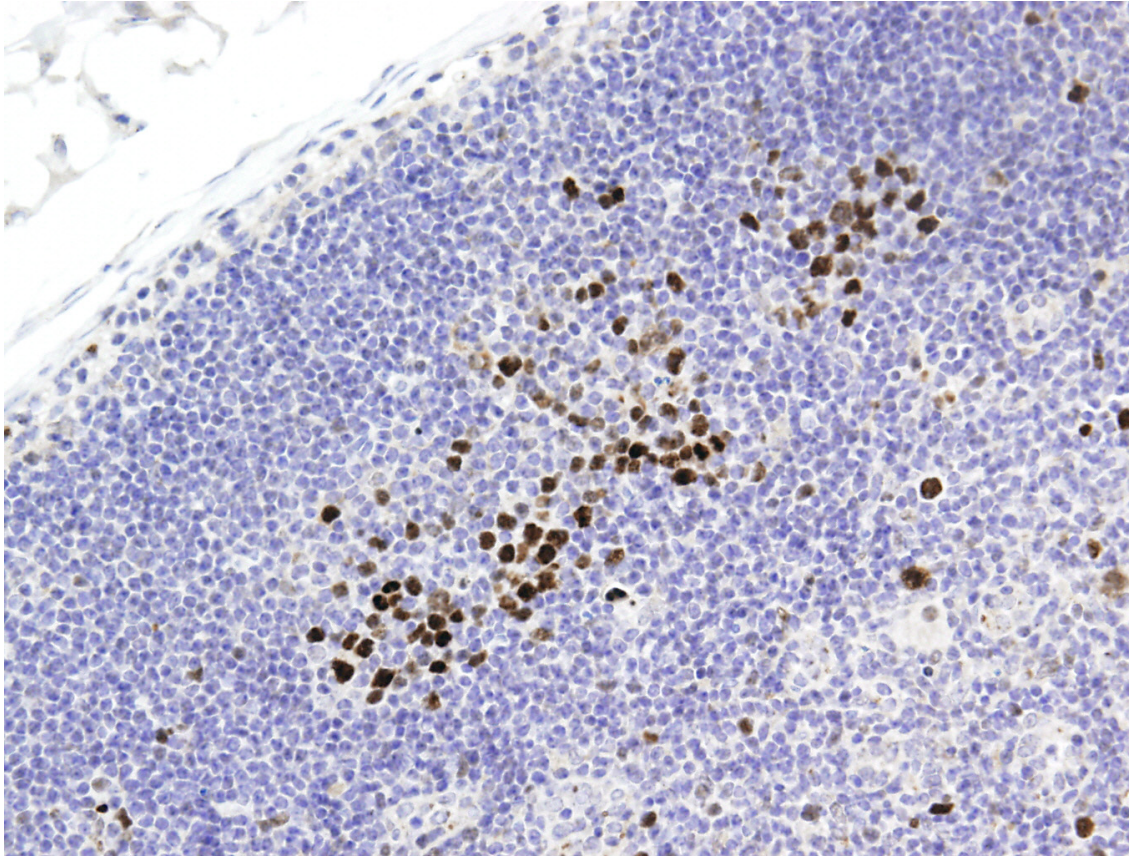
CONTACT INFORMATION:	Monoclonal Antibodies Unit. Centro Nacional de Investigaciones Oncológicas
TYPE:	mouse anti mouse
CLONE NAME:	163C
PROTEIN:	Human full length EED (Embryonic ectoderm development)
PROTEIN WEB:	<a href="http://www.hprd.org/alternate?hprd_id=09343&amp;isoform_id=09343_1&amp;isoform_name=Isoform_1">http://www.hprd.org/alternate?hprd_id=09343&amp;isoform_id=09343_1&amp;isoform_name=Isoform_1</a>
ANTIGEN USED:	His-EED full length protein
FUSION PARTNER:	myeloma p3-NS1/Ag4-1 (NS1) cell
ISOTYPE:	IgG2a
SPECIES REACTIVITY:	human and mouse
PREPARATION AND STORAGE:	Aliquot and store at 4C. Do not freeze
COMMERCIALIZED BY:	Active Motif

### DESCRIPTION

This gene encodes a member of the Polycomb-group (PcG) family. PcG family members form multimeric protein complexes, which are involved in maintaining the transcriptional repressive state of genes over successive cell generations.

### APPLICATIONS

IHC Techniques	Clone	Dilution	Antibody concentration	Antigen retrieval method	Visualization kit	Positive control	Negative control	Protein localization	Positivity in other species
Frozen tissue and cytopspins									
Paraffin tissue									
Recommended	163C	1:75	Supernatant	Discovery Xt CC1 OmniMap	Ventana	lymph node		Nuclear	human
Immunofluorescence									



**Anti-EED antibody (163C) in mouse lymph node paraffin section**In lymph node, EED protein is strongly expressed by germinal center cells.