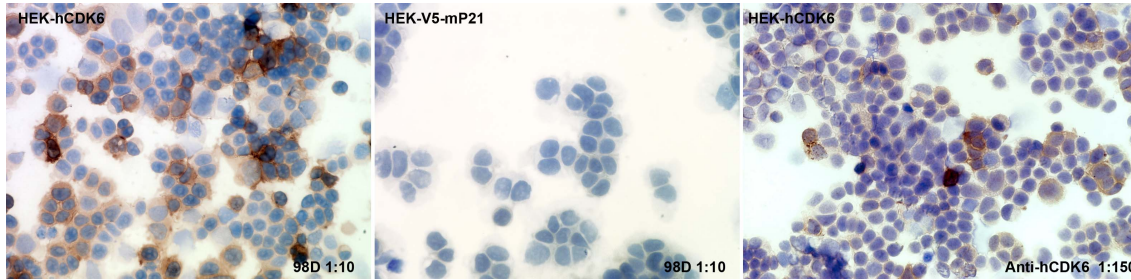


CDK6

CONTACT INFORMATION: Monoclonal Antibodies Unit. Centro Nacional de Investigaciones Oncológicas
STATUS: Validated
TYPE: mouse anti human
CLONE NAME: 98D
PROTEIN: Cyclin dependent kinase 6
PROTEIN WEB: <http://www.ncbi.nlm.nih.gov/protein/AAD43504.1>
ANTIGEN USED: His-mCDK6 recombinant protein (full length)
FUSION PARTNER: myeloma p3-NS1/Ag4-1 (NS1) cell
ISOTYPE: IgG1
SPECIES REACTIVITY: human and mouse
PREPARATION AND STORAGE: Aliquot and store at 4C. Do not freeze

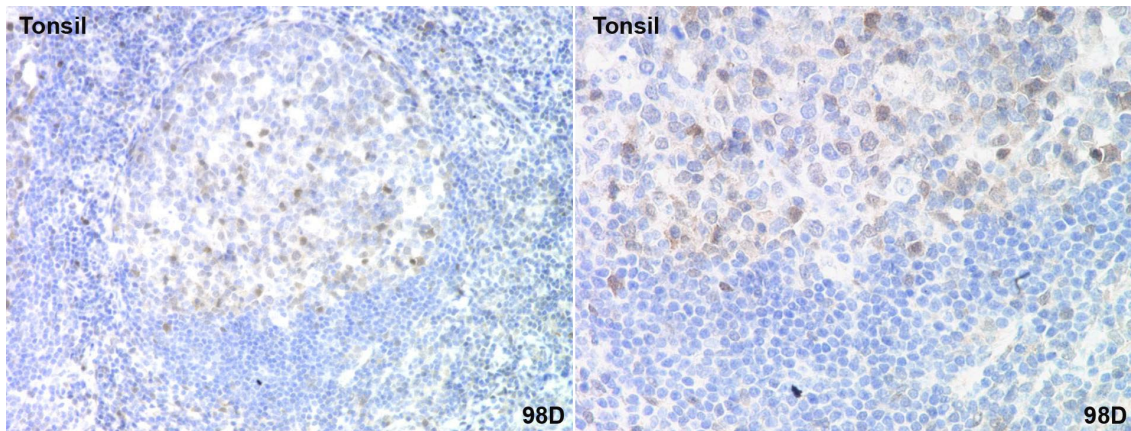
APPLICATIONS

IHC Techniques	Clone	Dilution	Antibody concentration	Antigen retrieval method	Visualization kit	Positive control	Negative control	Protein localization	Positivity in other species
Frozen tissue and cytopins									
Paraffin tissue									
Recommended	98D	1:20	neat supernatant	Tris-EDTA	Novolink kit				mouse
Immunofluorescence									



98D mAb in trasfected cells

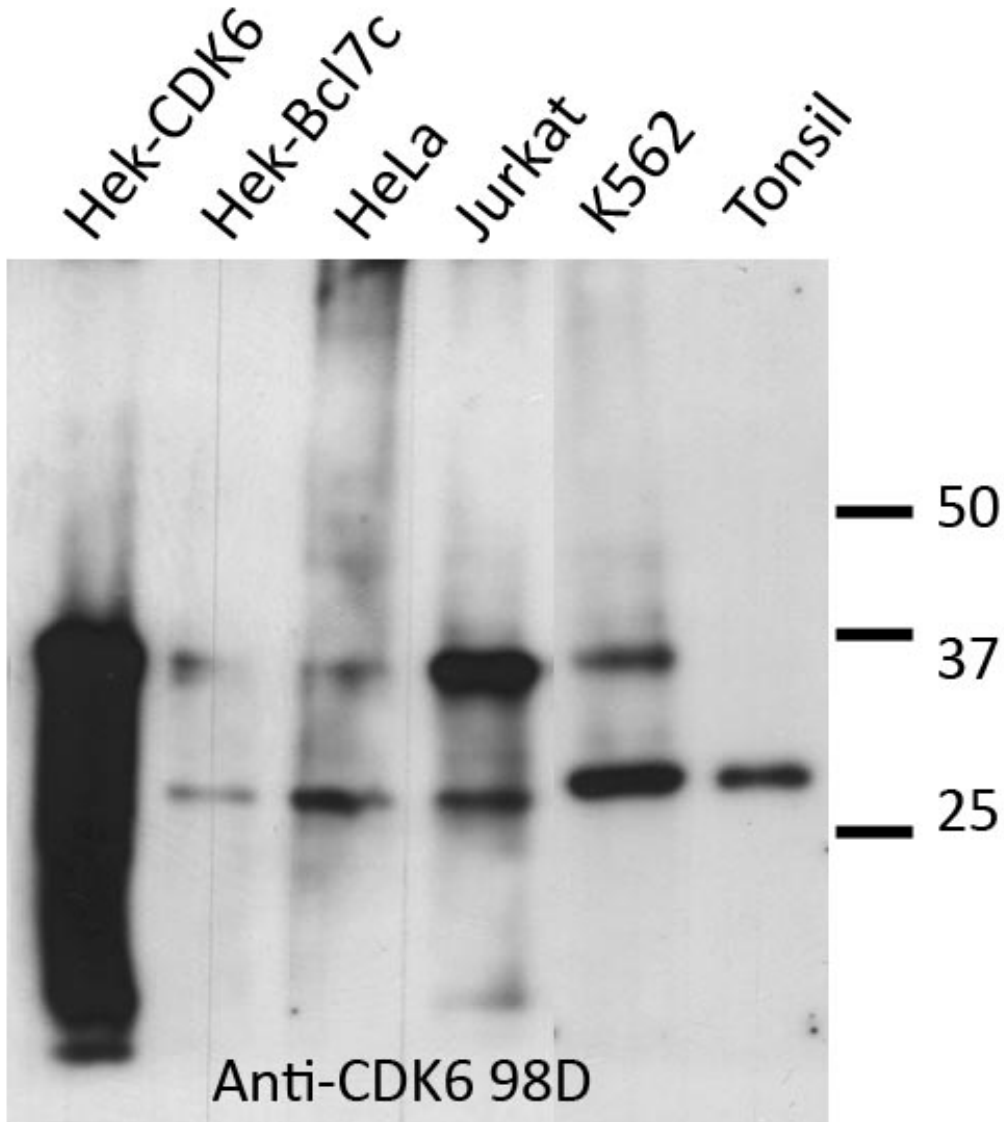
To confirm that 98D mAb recognized CDK6 protein, immunohistochemistry on frozen cytopspins preparations of V5-tagged human CDK6 expressed in Hek293T was performed. Cytospin preparation of V5-tagged mouse p21 protein was used as a negative control. Labeling with the anti-hCDK6 mAb confirmed the efficiency of transfection.



98D antibody can be used to detect human CDK6 protein in paraffin embedded tissues.

WB Techniques	Clone	Dilution	Antibody concentration	Positive control	Negative control	Expected MW	Observed Mw	Positivity in other species
Western Blotting								
Recommended	98D	undiluted	supernatant			37kDa	37kDa	mouse

Immunoprecipitation



Western Blotting of CDK6 (98D) using different human cell lines.

Lane 1 Hek-CDK6 (20ug)

Lane 2 Hek-BCL7c (20ug)

Lane 3 HeLa (200ug)

Lane 4 Jurkat (200ug)

Lane 5 K562 (200ug)

Lane 6 Tonsil (200ug)