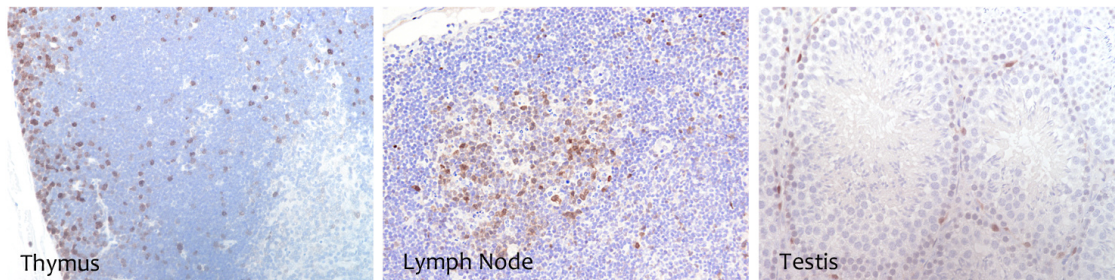


## CDK6

**CONTACT INFORMATION:** Monoclonal Antibodies Unit. Centro Nacional de Investigaciones Oncológicas  
**STATUS:** Validated  
**TYPE:** mouse anti mouse  
**CLONE NAME:** 98D  
**PROTEIN:** Cyclin dependent kinase 6  
**PROTEIN WEB:** <http://www.ncbi.nlm.nih.gov/protein/AAD43504.1>  
**ANTIGEN USED:** His-mCDK6 recombinant protein (full length)  
**FUSION PARTNER:** myeloma p3-NS1/Ag4-1 (NS1) cell  
**ISOTYPE:** IgG1  
**SPECIES REACTIVITY:** human and mouse  
**PREPARATION AND STORAGE:** Aliquot and store at 4C. Do not freeze

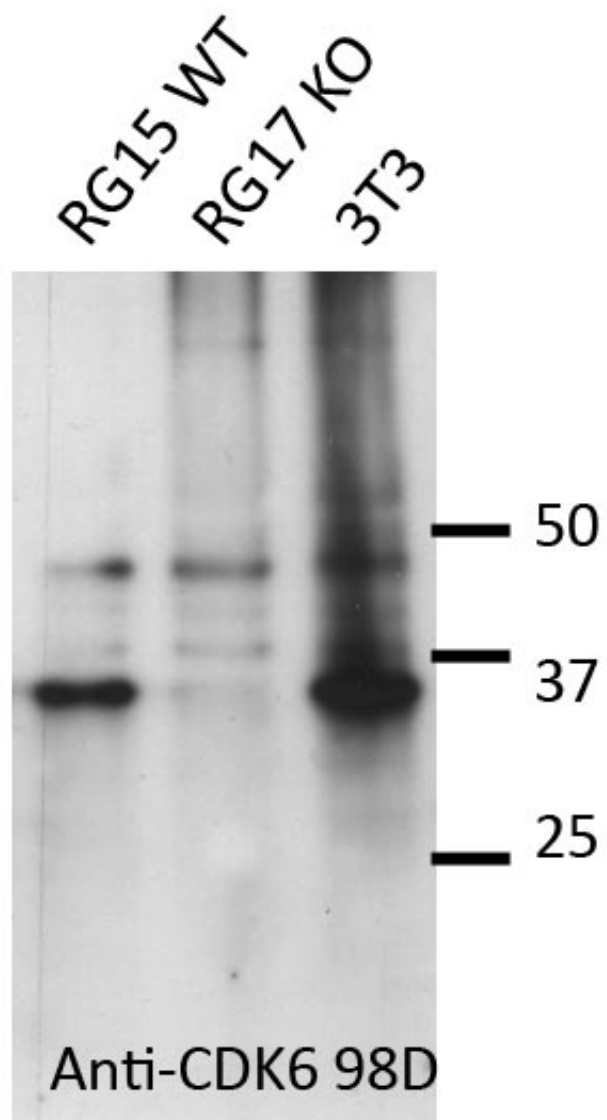
### APPLICATIONS

IHC Techniques	Clone	Dilution	Antibody concentration	Antigen retrieval method	Visualization kit	Positive control	Negative control	Protein localization	Positivity in other species
Frozen tissue and cytopins									
Paraffin tissue									
Recommended	98D	neat	supernatant	Discovery Xt Std RiboCC	Ventana	lymph node			mouse
Immunofluorescence									



**mAb 98D in mouse tissue**

WB Techniques	Clone	Dilution	Antibody concentration	Positive control	Negative control	Expected MW	Observed Mw	Positivity in other species
<b>Western Blotting</b>								
Recommended	98D		supernatant	3T3 cell line		37kDa	37kDa	mouse
<b>Immunoprecipitation</b>								



**Western Blotting of CDK6 (98D) using different mouse cell and tissues extracts**

Lane 1 RG15WT (200ug)

Lane 2 RG17KO (200ug)

Lane 3 3T3 cell line (200ug)