

## Estrogen Receptor Alpha

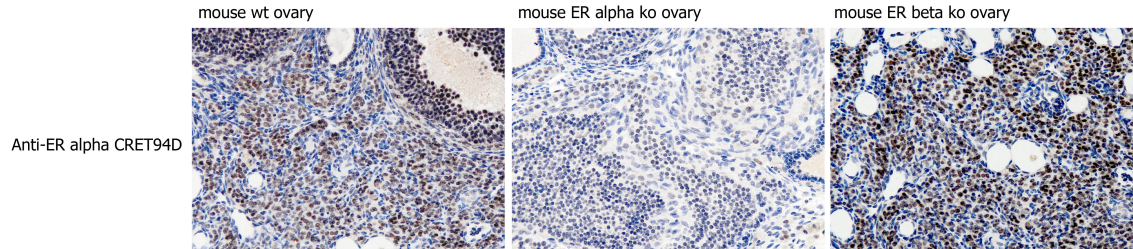
<b>CONTACT INFORMATION:</b>	Monoclonal Antibodies Unit. Centro Nacional de Investigaciones Oncológicas
<b>STATUS:</b>	Validated
<b>TYPE:</b>	mouse anti mouse
<b>CLONE NAME:</b>	CRET94D
<b>PROTEIN:</b>	Estrogen Receptor Alpha (ESR1)
<b>PROTEIN WEB:</b>	<a href="http://www.hprd.org/alternate?hprd_id=00589&amp;isoform_id=00589_4&amp;isoform_name=Isoform_1">http://www.hprd.org/alternate?hprd_id=00589&amp;isoform_id=00589_4&amp;isoform_name=Isoform_1</a>
<b>ANTIGEN USED:</b>	MBP-CRE-ERT recombinant protein
<b>FUSION PARTNER:</b>	myeloma p3-NS1/Ag4-1 (NS1) cell
<b>ISOTYPE:</b>	IgG1
<b>SPECIES REACTIVITY:</b>	Human and mouse
<b>PREPARATION AND STORAGE:</b>	Aliquot and store at 4C. Do not freeze

### DESCRIPTION

The oestrogen receptor alpha (ESR1) is a transcription factor that potentiates the response to diverse stimuli, including oestrogen and growth factors, in various tissue types. Its recruitment to the DNA is directly regulated by the chromatin landscape, inclusive of chromatin compaction and epigenetic modifications.

### APPLICATIONS

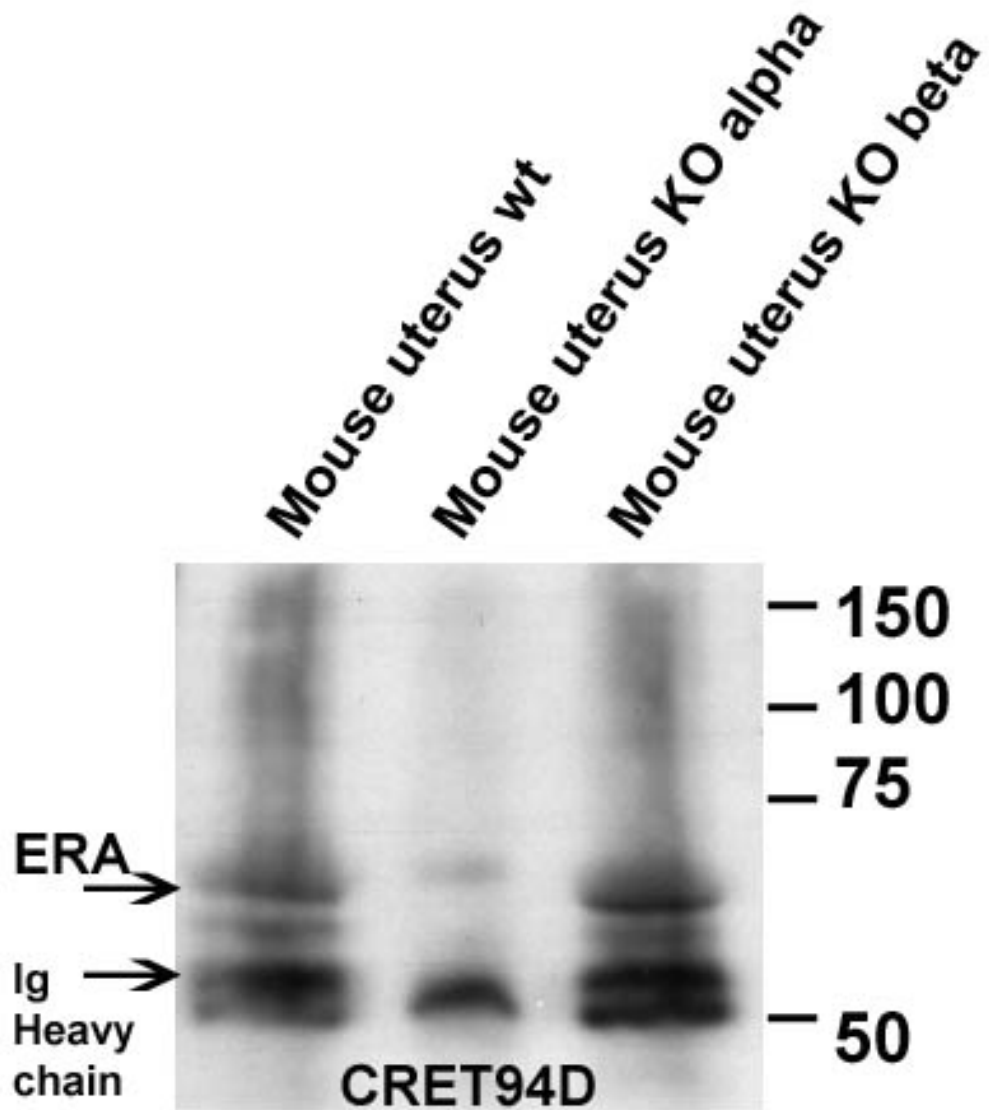
IHC Techniques	Clone	Dilution	Antibody concentration	Antigen retrieval method	Visualization kit	Positive control	Negative control	Protein localization	Positivity in other species
<b>Frozen tissue and cytopins</b>									
<b>Paraffin tissue</b>									
Recommended	CRET 94D	undiluted	supernatant	OmniMap Mild CC1	Ventana	Uterus			human
<b>Immunofluorescence</b>									



**Estrogen receptor expression in mouse paraffin ovary.**

The immunohistochemistry in mouse ovaries embedded in paraffin (wt, ER alpha ko and ER beta ko) confirms the specificity of the antibody.

WB Techniques	Clone	Dilution	Antibody concentration	Positive control	Negative control	Expected MW	Observed Mw	Positivity in other species
<b>Western Blotting</b>								
Recommended	CRET94D	NEAT	Supernatant	uterus		66kDa	66kDa	
<b>Immunoprecipitation</b>								



**Western blotting of mice tissue extract**

Lane 1 Mouse uterus wt (100ug)

Lane 2 Mouse uterus KO ERA (100ug)

Lane 3 Mouse uterus KO ERB (100ug)