

## BCL7A

CONTACT INFORMATION:	Monoclonal Antibodies Unit. Centro Nacional de Investigaciones Oncológicas
STATUS:	Validated
TYPE:	mouse anti mouse
CLONE NAME:	15C
PROTEIN:	Bcl7a human full length
PROTEIN WEB:	<a href="http://www.ncbi.nlm.nih.gov/omim/601406">http://www.ncbi.nlm.nih.gov/omim/601406</a>
ANTIGEN USED:	His-GST-Bcl7a recombinant protein
FUSION PARTNER:	myeloma p3-NS1/Ag4-1 (NS1) cells
ISOTYPE:	IgG1
SPECIES REACTIVITY:	human and mouse
PREPARATION AND STORAGE:	Aliquot and store at 4C. Do not freeze
APP RECOMMENDED:	IHQ-paraffin, IF
APP NO RECOMMENDED:	WB, IHQ-frozen
APP NO TESTED:	IP, Flow cytometry

### DESCRIPTION

---

This gene is directly involved, with Myc and IgH, in a three-way gene translocation in a Burkitt lymphoma cell line. As a result of the gene translocation, the N-terminal region of the gene product is disrupted, which is thought to be related to the pathogenesis of a subset of high-grade B cell non-Hodgkin lymphoma.

### PUBLICATION DESCRIBING ANTIBODY CHARACTERIZATION/VALIDATION

---

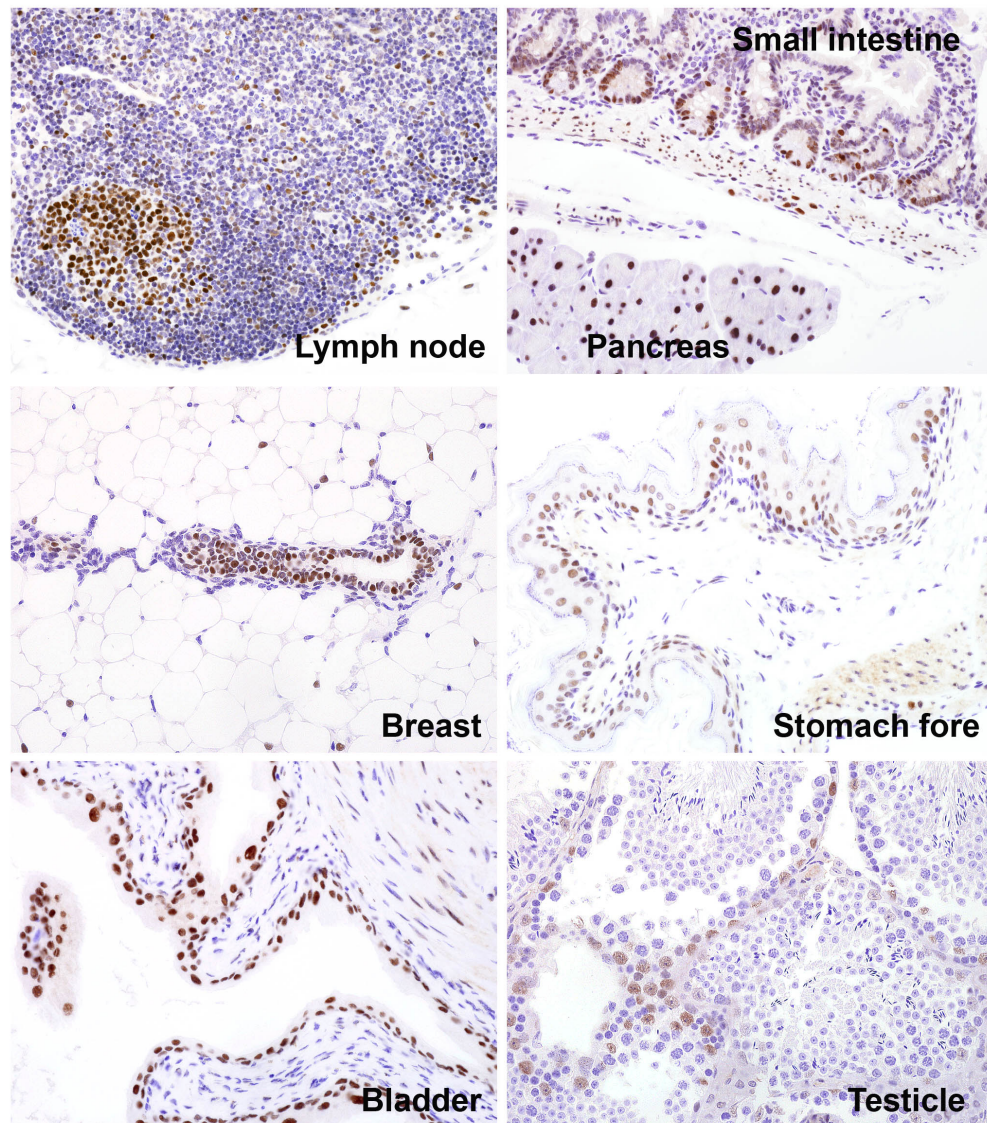
BCL7A protein expression in normal and malignant lymphoid tissues. Ramos-Medina R, Montes-Moreno S, Maestre L, Cañamero M, Rodríguez-Pinilla M, Martínez-Torrecedrada J, Piris MÁ, Majid A, Dyer MJ, Pulford K, Roncador G. Br J Haematol. 2013 Jan;160(1):106-9.

### APPLICATIONS

---

## Monoclonal Antibodies Catalogue

IHC Techniques	Clone	Dilution	Antibody concentration	Antigen retrieval method	Visualization kit	Positive control	Negative control	Protein localization	Positivity in other species
Frozen tissue and cytopspins									
Paraffin tissue									
Recommended	15C		supernatant	Discovery Xt CC1 OmniMap	Ventana	lymph node		nuclear	human
Immunofluorescence									



**Anti-BCL7A antibody in mouse paraffin tissues**